

## Shallow Water Profiler: Base•X<sub>2</sub>

- Features embedded WiFi connectivity and GPS geo-referencing. Data is automatically downloaded and processed into desired manufacturer formats, saving valuable time for the operator.
- Converts from an SVP to a CTD profiler with the switch of a single sensor head
- Is available rated to 100 m and 500 m

## Deep Water Profiler: Minos•X

- Known for its rugged performance and ease of use
- Is the smallest combined CTD/SVP on the market
- Rated to 1000 m in acetal, 6000 m in titanium



Minos•X

Base•X<sub>2</sub>

| Name & Product Code                                  | No. of Ports | Size (dia. x length, mm) | Communications                    | Input Voltage (v) | Materials | Max. Depth (m) | Weight in Air (kg) | Weight in Water (kg) |
|--|--------------|--------------------------|-----------------------------------|-------------------|-----------|----------------|--------------------|----------------------|
| <b>BASE•X<sub>2</sub></b><br>PDC-BSX2-P1S1-01        | 2            | 69 x 390                 | WiFi, RS-232, RS-485              | 9-28              | Acetal    | 100            | 1.17               | 0.49                 |
| <b>BASE•X<sub>2</sub></b><br>PDC-BSX2-P1S1-05        |              |                          |                                   |                   |           | 500            |                    |                      |
| <b>MINOS•X</b><br>PDC-MNX-P1S2-10<br>PDC-MNX-P2S1-10 | 3            | 76 x 597                 | RS-232, RS-485, <sup>1</sup> WiFi | 8-26              | Acetal    | 1000           | 2.23               | 0.73                 |
| <b>MINOS•X</b><br>PDC-MNX-P1S2-60<br>PDC-MNX-P2S1-60 | 3            |                          |                                   |                   | Titanium  | 6000           |                    |                      |

<sup>1</sup> With Data•Xchange

| Name & Product Code                               | Max. Depth (m) | Range  | Precision (+/-)                   | Accuracy (+/-)                   | Resolution                        | Response Time                          |
|---|----------------|--|-----------------------------------|----------------------------------|-----------------------------------|--|
| <b>SV•Xchange™</b><br>XCH-SV-STD                  | 6000           | 1375-1625 m/s  | 0.006 m/s                         | 0.025 m/s                        | 0.001 m/s                         | 20 ms                                  |
| <b>P•Xchange™</b><br>XCH-PRS-0050 to XCH-PRS-6000 | As per range   | 50, 100, 200, 500, 1000, 2000, 4000, 5000, 6000 dBar       | 0.03% FS                          | 0.05% FS                         | 0.02% FS                          | 10 ms                                  |
| <b>CT•Xchange™</b><br>XCH-CT-RA-090-n545          | 6000           | CND: 0-90 mS/cm <sup>1</sup><br>TMP: -5-45 °C <sup>2</sup> | CND: 0.003 mS/cm<br>TMP: 0.003 °C | CND: 0.01 mS/cm<br>TMP: 0.005 °C | CND: 0.001 mS/cm<br>TMP: 0.001 °C | CND: 25 ms <sup>3</sup><br>TMP: 100 ms |

<sup>1</sup> Will over-range to 100 mS/cm. Inquire for specifications.

<sup>2</sup> Will over-range to 60 °C. Inquire for specifications.

<sup>3</sup> At 1 m/s flow



Available with WiFi and GPS

Base•X<sub>2</sub>: embedded

Minos•X: with Data•Xchange

Plus•X: with Data•Xchange

WiFi Range: >20m

GPS Accuracy: <5m

Speed: up to 300 kB/s

Maximum Depth: 1000m

## Real-Time Sound Velocity: Micro•X

- Designed primarily for MBES, hull mounted applications, and vehicle integration
- Pairs with Base•X<sub>2</sub> or Minos•X to provide a total SV package
- Cables compatible with all major multibeam systems available; custom configurations available on request

| Name & Product Code        | Size, mm (dia. x length) | Communications    | Input Voltage (v) | Materials | Max Depth (m) | Weight in Air (kg) | Weight in Water (kg) |
|----------------------------|--------------------------|-------------------|-------------------|-----------|---------------|--------------------|----------------------|
| MICRO•X<br>PDC-MIX-P1S0-60 | 33<br>x<br>240           | RS-232,<br>RS-485 | 8-26              | Titanium  | 6000          | 0.39               | 0.25                 |

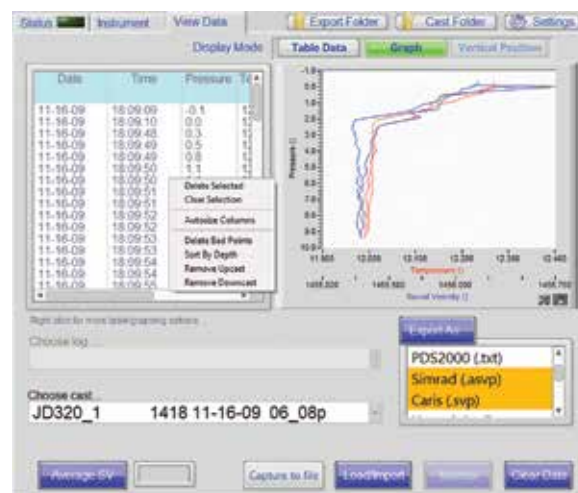
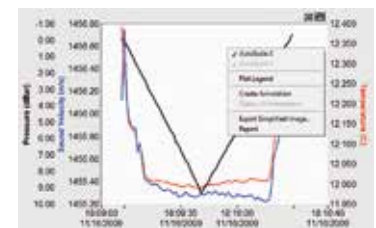
| Name & Product Code       | Max. Depth (m) | Range            | Precision (+/-) | Accuracy (+/-) | Resolution | Response Time |
|---------------------------|----------------|------------------|-----------------|----------------|------------|---------------|
| SV•Xchange™<br>XCH-SV-STD | 6000           | 1375-1625<br>m/s | 0.006 m/s       | 0.025 m/s      | 0.001 m/s  | 20 ms         |



## Software: SeaCast

SeaCast provides an intuitive interface with X•Series instrumentation, offering easy instrument setup, data collection and management, and exporting tools.

- Automated connection and workflow via wireless or cable
- Instrument and sensor details displayed
- Calibration certificates printed on demand
- Automatic or manual data filtering
- Offline access to existing casts for post-processing
- Show live data on multiple graphs concurrently
- Graph editing and annotation for export
- Automated data export functionality
- Simultaneous export to multiple data formats, including:
  - Hypack
  - Quinsy
  - Kongsberg
  - Sonardyne
  - PDS 2000
  - CARIS
  - CARIS (concatenated)
  - HIPAP
  - CSV
  - Custom



T: +1-250-656-0771 E: sales@AMLOceanographic.com

T: +1-800-663-8721 (NA) W: www.AMLOceanographic.com

F: +1-250-655-3655

2071 Malaview Avenue Sidney, British Columbia Canada, V8L 5X6  
800A Unit 6C Windmill Road Dartmouth, Nova Scotia Canada, B3B 1L1