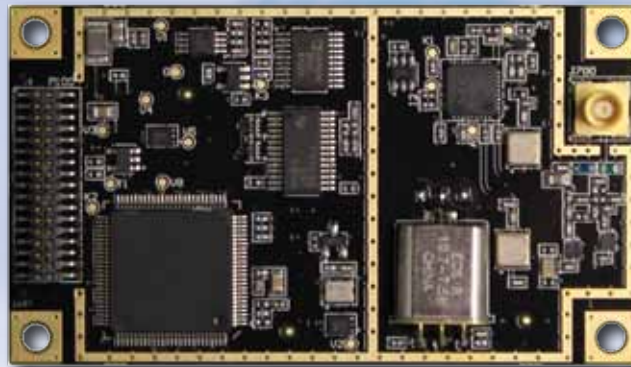


LX-2 OEM Board

Improve positioning accuracy with the new LX-2 OEM board



Improve GPS positioning accuracy by adding OmniSTAR® differential capability with Hemisphere GPS' LX-2™ OEM board. OmniSTAR broadcasts via satellite differential signal corrections covering most land areas worldwide. The LX-2, coupled with Hemisphere GPS' exclusive P200™ board, can track OmniSTAR XP or HP differential signals that improve positioning to less than sub-decimeter accuracies. Along with Hemisphere GPS' P100™ board, the LX-2 receives OmniSTAR VBS differential signals that improve positioning to less than sub-meter accuracies. It is an ideal alternative or back-up to other differential sources such as SBAS (WAAS, EGNOS, MSAS, etc.) and radiobeacon, especially in regions where those signals are difficult or impossible to track.

The LX-2 automatically tracks the best differential satellite broadcast if more than one is available in a particular region or tracks a specific satellite manually set by the user.

The LX-2 comes as an OEM board which can be easily paired with the P200 or the P100 board for optimal performance. Integration of the two boards is simplified as they are exactly the same size.

Key LX-2 OEM Board Advantages

- COAST™ technology maintains differentially-corrected positioning for 40 minutes or more after loss of differential signal
- Automatically tracks the best differential satellite broadcast if more than one is available in a particular region or tracks a specific satellite manually set by the user
- LX-2 is a drop-in replacement for the previous generation LX-1
- Smart power management — power is off when not in use

LX-2 OEM Board

Operating Specifications

Receiver Type:	Single channel		
Frequency Range:	1530 to 1560 MHz		
Satellite Selection:	75 KHz		
Update Rate:	Manual or Automatic		
Horizontal Accuracy:	RMS (67%)	P100	P200
	OmniSTAR VBS	0.5 m	0.3 m
	OmniSTAR XP	N/A	0.05 m
	OmniSTAR HP	N/A	0.05 m
Reacquisition Time:	15 seconds (typical)		
Sensitivity:	-130 dBm		
Rejection:	15 kHz spacing >30dB 300 kHz spacing >60dB		
Processor:	DSP for demodulation and protocol decoding (P100 and P200 modules provide processing for differential algorithms)		
Command Support:	Reports OmniSTAR region and satellite information, allows input and status of OmniSTAR subscription, Bit Error Rate output for reception quality indication, manual frequency tuning		

Communications

Serial Ports: Port D on P100 and P200 (in use)

Power

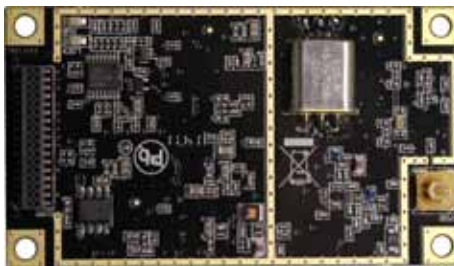
Input Voltage:	3.3 VDC +/-5%
Power Consumption:	0.72 W @ 3.3V
Current Consumption:	210 mA @ 3.3V
Antenna Voltage Input:	0 to 15VDC Max
Antenna Short Circuit Protection:	Yes
Antenna Input Impedance:	50 Ω

Environmental

Operating Temperature:	-30°C to +70°C (-22°F to +158°F)
Storage Temperature:	-40°C to +85°C (-40°F to +185°F)
Humidity:	95% non-condensing
Shock and Vibration:	EP455
EMC:	FCC Part 15, Subpart B, CE (IEC 60945), CISPR22

Mechanical

Dimensions:	7.1 L x 4.1 W x 1.2 H (cm) 2.8 L x 1.6 W x 0.5 H (in)
Weight:	<14 g (<0.5 oz)
Power/Data Connector:	17-pin male header, 2 rows, 0.05" pitch 17-pin female header, 2 rows, 0.05" pitch
Antenna Connectors:	MCX straight socket (male and female)



Back View

Authorized Distributor:



HEMISPHERE GPS
4110 - 9th Street S.E.
Calgary, AB T2G 3C4
Canada

Phone: 403.259.3311
Fax: 403.259.8866
precision@hemispheregps.com
www.hemispheregps.com