



**APPLIED ACOUSTICS**  
Underwater Technology

---

## **CSPN Capacitor Charging Unit Operation Manual**

---

**Applied Acoustic Engineering Ltd**  
Marine House, Marine Park  
Gapton Hall Road  
Great Yarmouth NR31 0NB  
United Kingdom

**T** +44(0)1493 440355  
**F** +44(0)1493 440720  
**E** [general@appliedacoustics.com](mailto:general@appliedacoustics.com)  
**W** [www.appliedacoustics.com](http://www.appliedacoustics.com)

## Revision History

Issue	Change No.	Reason for change	Date
1	-	CSPN 2400 Changes Non AAE Sound Source Guidelines added Maintenance Checklist added Schematics updated HVJ3001 diagrams updated	18/08/15

# Table of Contents

<b>REVISION HISTORY</b> .....	<b>2</b>
<b>SECTION 1 - OPERATIONAL</b> .....	<b>7</b>
<b>1.1. ENVIRONMENTAL CONSIDERATIONS</b> .....	<b>7</b>
<b>1.2. INTRODUCTION</b> .....	<b>8</b>
<b>1.3. INSTALLATION</b> .....	<b>9</b>
SITING THE CSP-N.....	9
EARTHING .....	10
INSTALLATION.....	11
OUTPUT CABLE CONNECTION .....	11
LINE VOLTAGE CONNECTION.....	12
AC POWER REQUIREMENTS .....	13
TYPICAL CURRENTS .....	13
POWER UP.....	13
TRIGGER INPUT .....	13
LOCAL / REMOTE .....	14
<b>1.4. OPERATION</b> .....	<b>15</b>
ENERGY SETTINGS.....	16
OPERATION OF THE CSP-N WITH A BOOMER SOUND SOURCE.....	17
LOAD SPECIFICATIONS.....	17
BOOMER LOAD.....	17
OPERATION OF THE CSP-N WITH A SPARKER SOUND SOURCE.....	18
OPERATION OF THE CSP-N WITH A NON AAE SOUND SOURCE .....	18
DUMMY LOAD.....	18
<b>1.5. OPERATOR CONTROLS AND INDICATORS</b> .....	<b>19</b>
MAINS POWER SWITCH.....	19
EMERGENCY STOP SWITCH .....	19
HV OFF/RESET SWITCH .....	19
HV ON SWITCH .....	19
MANUAL KEY SWITCH .....	19
KEY POLARITY SWITCH.....	19
LOCAL / REMOTE SWITCH.....	19
CHARGE RATE SWITCH (LOCATED ON REAR PANEL) .....	19
<b>1.5.1 INDICATORS</b> .....	<b>20</b>
EOC (END OF CHARGE) INDICATOR.....	20
FAULT INDICATOR .....	20
INTERLOCK INDICATOR.....	20
TIME OUT INDICATOR .....	20
HV FAULT INDICATOR .....	20
LOAD FAULT INDICATOR .....	20
<b>1.5.2. CONNECTORS</b> .....	<b>21</b>
MAINS INPUT .....	21
REMOTE .....	21
HV OUTPUT .....	21
TRIGGER INPUT .....	21

<b>1.6. REAR PANEL .....</b>	<b>21</b>
FUSES .....	21
CHARGE RATE SWITCH.....	21
FAN FILTERS .....	21
<b>1.7. PRODUCT RECYCLING / DISPOSAL .....</b>	<b>22</b>
<b>1.8. SPECIFICATIONS.....</b>	<b>23</b>
CSP-N SERIES CAPACITOR DISCHARGE POWER SUPPLIES.....	23
MODELS AVAILABLE.....	23
PHYSICAL SPECIFICATIONS .....	23
ELECTRICAL SPECIFICATIONS.....	23
SAFETY FEATURES .....	24
OPTIONS.....	24
<b>SECTION 2 - TROUBLESHOOTING .....</b>	<b>25</b>
<b>2.1. INTRODUCTION .....</b>	<b>25</b>
<b>2.2. CIRCUITS AND DESCRIPTIONS.....</b>	<b>26</b>
SYSTEM OVERVIEW .....	26
HIGH VOLTAGE SECTION .....	27
HV MONITOR BOARD.....	27
HV DETECT BOARD.....	27
HV CHARGER .....	27
AC SECTION .....	28
CONTROL BOARD AND FRONT PANEL COMPONENTS .....	28
CONTROL BOARD .....	29
KEY BOARD .....	29
HIGH VOLTAGE / RELAY SWITCHING .....	29
FAULT LATCHES / HV ON CIRCUIT .....	30
HIGH VOLTAGE ON CIRCUIT.....	31
FRONT PANEL BOARD.....	31
INTERLOCKS / RELAY BOARD .....	32
<b>2.3. REPAIR AND FAULT FINDING ON CSP POWER SUPPLIES .....</b>	<b>33</b>
<b>2.4. CSP-N BASIC FAULT DIAGNOSIS .....</b>	<b>34</b>
<b>2.5. TROUBLESHOOTING GUIDE.....</b>	<b>36</b>
<b>2.6. MAINTENANCE CHECK LIST .....</b>	<b>39</b>
<b>SECTION 3 – CIRCUIT AND BLOCK DIAGRAMS.....</b>	<b>40</b>
<b>3.1. INTRODUCTION .....</b>	<b>40</b>
CIRCUIT AND BLOCK DIAGRAMS INDEX .....	40
<b>SECTION 4 – SYSTEM INTERCONNECTION.....</b>	<b>60</b>
HVJ3001 HV JUNCTION BOX .....	60
<b>4.1. TRIPLE ARRAY ARRANGEMENT.....</b>	<b>60</b>
400 TIPS DURASPARK 400 // 240 TIPS DURASPARK 240 // 3 BOOMER PLATE S-BOOM.....	60
<b>4.2. DOUBLE ARRAY ARRANGEMENT .....</b>	<b>61</b>
240 TIPS DURASPARK 400 // 160 TIPS DURASPARK 240 // 2 BOOMER PLATE S-BOOM.....	61
<b>4.3. SINGLE ARRAY ARRANGEMENT .....</b>	<b>61</b>
80 TIPS DURASPARK 400 AND 240 // SINGLE BOOMER PLATE S-BOOM .....	61

---

<b>4.4. HVJ3001 INTERCONNECTIONS .....</b>	<b>62</b>
<b>4.5. HVJ3001 JUNCTION BOX INTERLOCK WIRING.....</b>	<b>62</b>

Thank you for choosing Applied Acoustic Engineering as one of your subsea equipment suppliers.  
We hope you experience many years of reliable operational use from our products.

If you do encounter any technical issues with any of our products then please don't hesitate to contact our Technical Team via the following methods.

Tel: +44 (0)1493 440355  
Fax: +44 (0)1493 440720

Email: [techsupport@appliedacoustics.com](mailto:techsupport@appliedacoustics.com)



Applied Acoustic Engineering Ltd has made every effort to ensure that the information contained in this manual is correct at time of print. However our policy of continual product improvement means that we cannot assume liability for any errors which may occur.



These written instructions must be followed fully for reliable and safe operation of the equipment that this manual refers to. Applied Acoustic Engineering Ltd cannot be held responsible for any issues arising from the improper use or maintenance of equipment referred to in this manual or failure of the operator to adhere to the instructions laid out in this manual. The user must be familiar with the contents of this manual before use or operation.

# WARNING

**THIS EQUIPMENT CONTAINS LETHAL VOLTAGES, AND MUST  
BE EARTHED AT ALL TIMES.**

**ENSURE ADEQUATE SAFETY PROCEDURES ARE EMPLOYED.**

Information in this manual is copyright 1993 – 2015, Applied Acoustic Engineering Ltd.  
This manual is loaned without other consideration than the agreement and condition that it is not  
to be reproduced, copied or otherwise disposed of directly, and is not to be used in whole or in  
part to assist in or to furnish any information for the making of drawings, prints, apparatus or parts  
thereof.

---

## Section 1 - OPERATIONAL

### 1.1. Environmental Considerations

#### Seismic Sound Sources and Marine Life

Although not proven, there is concern in some quarters that marine mammals may be harmed or their behaviour changed by seismic activity. The sound pulses from sparkers and boomers is much lower in amplitude and higher in frequency (so it will travel less far) than air guns. However it makes sense that a precautionary approach to emitting sounds in the whales and dolphins' natural habitat should be observed.

The CSP energy sources described in this manual have the ability to “soft-start” and increase the energy emitted in the water slowly over time and this technique will give any marine mammals nearby the opportunity to escape before maximum signal amplitude is reached. It will also give them a chance to get used to the noise if they choose to stay (!) rather than being subjected to a sudden shock of a full power seismic signal.

The procedure is quite simple:-

By using a slow repetition rate – say at 1 pulse per 15 seconds and by using the “Auto” charge rate, the energy will slowly increase over the course of several minutes. Once full power has been achieved, the repetition rate can then be slowly increased until the rate desired for the survey has been achieved.

Another factor to consider is to ensure that the start of any survey line is not in such a location that any cetacean is trapped by the vessel and the noise, for example in a small harbour. In such an instance, the survey should start in such a place that any cetacean in the vicinity has a clear and rapid means of escape into open water and away from any unnatural noise source. Further details and advice can be obtained from the following web site:-

[http://www.jncc.gov.uk/pdf/Seismic\\_survey\\_guidelines\\_200404.pdf](http://www.jncc.gov.uk/pdf/Seismic_survey_guidelines_200404.pdf). This web site refers to UK waters and relates to air guns as the sound source (in many ways different to a sparker or boomer), but should serve as a useful guide nonetheless.

## 1.2. Introduction

The CSP-N is an evolution of the CSP-D range of seismic power supplies. The CSP-N has a high voltage charger rated at 2000 joules per second, and can supply up to 1200 or 2400 joules of energy per shot into the seismic sound source for example Dura-Spark. The CSP-N allows the user to select HI and LO power levels this can effectively tune the source to a lower frequency response.

The CSP-N incorporates many common parts to the CSP-D, -P, -S range of power supplies and apart from utilizing negative High Voltage can be considered essentially as the same. All units feature a switchable soft start 'power save' circuit; AVIP (Automatic Variable Input Power) which allows the units to be operated from reduced generator sizes when operating at low output powers:-

Traditional high voltage power supplies (bang boxes) will charge the energy storage capacitors at a fixed high rate for example at 1500J per second even when the average energy drawn from the capacitors is less; a typical example may be 100 J at 3 pps (300J). This results in a rapid capacitor charge rate for 67 mS followed by nothing, until the next discharge / charge cycle. This charge / no charge operation can often result in generator hunting as the load changes, and may mean that a larger generator is needed than would be the case if the power requirement was averaged over time. By reducing the peak charge rate, the generator hunting is all but eliminated, and a smaller capacity generator is required. The AVIP circuitry will automatically adjust charge rate from 20% to 100% of specification, thus lowering the peak charge rate to just 300 J / second compared to bursts of 1500J/second. The circuitry also features a soft start function, which may take around 20 seconds before the charge rate is ramped up to the correct amount for the task in hand.

The CSP-N allows the user to effectively 'tune' the sound source to operate at a lower frequency by lowering the operating voltage and increasing the capacitance to supply the correct energy to the sound source. This may be effective in certain instances where more penetration is required.

The CSP-Ns monitor the output of the system for open circuit fault conditions and over current fault conditions, limited to approx. 9000A.



### 1.3. Installation

#### Siting the CSP-N

The CSP-N deliver high energy, high voltage pulses, yet still emit minimal electrical emissions, and so can carry the CE mark.

The CE marking ensure that the CSP-N can be sited next to sensitive electronic equipment which carry their own CE marking (for susceptibility to emissions) and will be unlikely to cause them interference. However it is often more convenient to locate the CSP-N nearer to the back deck and the deployment area so that the high voltage 'output' cable run is minimised.

As high voltages are present, the CSP-N must be located away from water spray and condensation, in an environment which is not allowed to become too hot. Care should be taken to allow safe and easy access, and that high voltage cables are out of harm's way. It should also be possible to switch off the unit quickly without having to reach over it!

Ventilation should also be present. All units draw air in from the rear and exhaust air from the front. For operation in high ambient temperatures, the rear cover of the transit case should be removed to allow a good air flow.



If condensation is allowed to develop serious damage may occur. Good room ventilation should be ensured, with no sudden change in temperature (i.e. bringing the unit into a warm room from a cold area) and allow the fans to operate for 10 - 15 minutes before switching on the high voltage.

## Earthing

The CSP-N MUST be earthed. The M8 earth bolt on the front panel should be connected to the vessel earth by a heavy gauge wire or cable. On larger ships, earth is usually a steel bulkhead, but for smaller fibre glass / wooden vessels a sea earth is necessary. A sea earth can be constructed from a 25 mm<sup>2</sup> or larger copper cable with 1 – 2 metres of insulation stripped off with all the exposed copper conductor in the water. A weight will be required to ensure that the sea earth cable is in the water at all times during towing activity even during heavy roll.

It is recommended that earthing arrangements are checked regularly as corrosion or abrasion (or metal cutting gear!) can cause damage which may result in the equipment becoming unsafe from having an ineffective earth.

The CSP-N range of Capacitor Discharge PSUs are compact and easy to operate. However, the units still generate lethal voltages, and the operators should make themselves aware of all necessary safety procedures. The equipment is designed so that there is no need for the operator to go inside for anything, except major repairs. We cannot be liable for any consequences should the units be opened. Health and Safety guidelines and our own Safety Policy strongly suggest that factory training is received before opening the top cover.

This manual is supplied in three parts:

<b>Section 1</b>	Basic operation information details.
<b>Section 2</b>	For manufacturer trained technicians only and provides troubleshooting advice, schematics and circuit descriptions.
<b>Section 3</b>	Provides block and circuit diagrams.

## Installation

The CSP-N Unit will normally be supplied from the factory in a 'Hardigg' transit case. As is the case with all electronic equipment, care should be exercised in handling. For maximum airflow in high ambient temperatures it is recommended that the anti-vibration housing rear panel be removed. The CSP-N should be positioned on its base in a dry ventilated area. Airflow for cooling is from back-to-front of the unit; there must be at least 50-60mm clear room from the rear panel to any obstruction. If the unit is to be operated in very warm ambient temperature (25°C or above), for optimum performance an air conditioned environment is strongly advised. If the unit overheats, it will switch OFF for a few minutes until it is cool.

Although the unit produces minimal interference, and carries a CE mark, it is often good practice to put the CSP-N away from the navigation and survey equipment and somewhere where cabling to the sound source can be run conveniently and safely. It is this cabling which is the most common source of electrical interference.



## **EARTHING - FURTHER REMINDER**

**THIS UNIT MUST BE EARTHED / GROUNDED BEFORE ANY POWER IS APPLIED. FAILURE TO DO SO MAY REPRESENT A SEVERE HAZARD TO BOTH EQUIPMENT AND PERSONNEL.**

The front of the CSP-N must be grounded to the ship's ground system. This is achieved by attaching a short length of thick wire or earth braid from the CSP-N front panel earth stud, to an appropriate earthing point on the vessel. If a suitable earth cannot be found, the CSP-N earth stud should be connected directly to the water using an adequate length of heavy wire, with the insulation removed from the submerged end in the water. A weight will also be necessary to keep the wire submerged when the vessel is underway.

## Output Cable Connection

**ENSURE POWER TO UNIT IS TURNED OFF BEFORE ANY CONNECTIONS ARE MADE.** Connect the high voltage cable to the CSP-N front panel using the high voltage connector. The HV connector has 2 small sensing pins which will deactivate the high voltage if mains power is applied without the connector in place. Ensure the HV connector is fully mated to the unit. The two larger sockets should never be at a high potential but it makes sense never to attempt to touch these.

If you have our HV junction box, the two conductors of the acoustic source - boomer plate or sparker should be connected to this before connecting to the CSP-N. The terminal wing nuts should be tightened onto clean copper or tinned copper terminals. A good connection is necessary as high currents pass through these terminals. Ensure that the +ve or red terminal is connected to the + mark inside the HV Junction box. The black or -ve terminal should be connected to the - mark inside the HV junction Box. Ensure that the microswitch 'clicks' when the top cover is secured. The HV Junction Box can be bulkhead mounted before the cover is secured.

## Output Cable Connection Continued

In the situation of the power cable / sound source being caught on an object, the HV cable is pulled from the HV Junction Box, rather than the CSP-N unit being pulled onto the floor.

The junction box is usually supplied with a 1.5 metre lead, terminated in our HV connector. The junction box is fitted with a microswitch which is connected to sense pins in the HV plug, i.e. deactivating the high voltage charger if the lid is removed and the 'INTERLOCK' light will illuminate.

## Line Voltage Connection

Mains input is connected by the 3-Pin Amphenol on the left of the front panel. Nominal input voltage is 230VAC 45-65 Hz. The wiring to this connector is as follows:-

<b>A</b>	Ground / Earth
<b>B</b>	Neutral
<b>C</b>	Live

If a ready-wired plug is supplied, it will be supplied from the factory with the following colour coding:-

<b>Green/Yellow</b>	Earth
<b>Blue</b>	Neutral
<b>Brown</b>	Live

The operator must ensure that the ac supply is capable of supplying sufficient energy to power the CSP-N unit. Although the unit will operate from most generators of 4 kVA, the quality and regulation vary considerably from make to make and how well they have been maintained.

A voltage stabiliser is not necessary as any reasonable variation of the AC supply will not affect the output voltage (hence power) unlike older designs.

NB Some older 'inverter' type generators do not work well with the CSP-N.

The AVIP technology inside the unit can be utilised to reduce the generator requirements. The CHARGE RATE switch has two positions (Located on rear panel)

OUT : High Charge rate.

The charger delivers the full charge rate (2000 J/sec peak) on demand to charge the storage capacitors.

IN : Auto Charge rate.

The AVIP (Automatic Variable Input Power) circuitry is operational. This adjusts the charge rate automatically to suit the capacitor selection and the repetition rate used, and ensures that a constant current is drawn from the AC mains supply. It is a soft start circuit and adjusts the charge rate by 5% per sample; a sample occurs each trigger pulse. AVIP will adjust the charge rate from 20% to 98%, thus allowing 100J 3pps operation from a 500 VA generator. Note that it can take up to 16 samples for the charge rate to be set to the correct amount.

## AC Power Requirements

Voltage ratings are quoted elsewhere in this manual.

## Typical Currents

At 1500J at 1 pps (AVIP out of circuit); Non PFC charger, the following currents apply:-

Voltage	Peak Current	Average Current
240 VAC 50 Hz	19.5A	7.9A

(At 60 Hz, the peak currents are slightly smaller)

To see clearly the effect of the AVIP board the following measurements are typical:-

240 VAC at 50 Hz supply. 100J at 1 pps output power

	Peak Current	Average Current
AVIP IN	2.58A	1.06A
AVIP OUT	9.51A	1.11A



## FURTHER REMINDER

If the unit has recently been moved from a cold environment to a warm one, condensation may have developed, which may cause arcing in high voltage equipment. The operator is advised to switch the unit on and run the fans for 10-15 minutes before allowing the high voltage to be switched on. This will allow the unit to warm up to the room temperature, and any condensation will disperse.

## Power Up

When suitably connected to ground, the transducer and AC mains, and the transducer is in the water, the power can be applied using the ON / OFF switch and circuit breaker. The fans will run, and the HV OFF / RESET button will illuminate. Select the appropriate power output required and press the RESET button to reset the internal circuitry. Turn and hold the HV ENABLE KEY & simultaneously press the HV ON button: there will be a small delay before the HV relays engage, and then the high voltage will come on as indicated by the illuminated HV ON switch. Any changes in system parameters (such as power change) will cause the HV to switch OFF, and the unit will need to be RESET before the HV can be switched on again. If the INTERLOCK indicator illuminates, check the HV plug / HV junction box.

## Trigger Input

Trigger input is by BNC connector. The unit accepts +ve trigger (triggers on rising edge) 5 - 20 volts. opto-isolated, or by contact closure, as controlled by the KEY switch. (OUT for +ve key, IN for contact closure.) The manual key button can be used too and this also shows, by illumination, when a key pulse has been accepted. (A lockout circuit limits the unit to around 6PPS maximum.)

## Local / Remote

The LOCAL / REMOTE switch allows connection of remote box for operation from the laboratory or instrument room. Using the remote box is achieved by turning the LOCAL / REMOTE switch to remote. The high voltage can only be turned on from the instrument room and *not* from the CSP-D Unit. The high voltage OFF button is operational from the CSP-D Unit *and* remote box. The CSP Unit can also be keyed from the remote box via a BNC socket. The remote also monitors the status of the key detect circuitry, and the key LED will only illuminate on reception of a valid key pulse within the CSP-D itself, thus the operator can also see if the interconnection cable is OK. The remote also has a FAULT LED, as well as high voltage ON and high voltage OFF indicators.

LOCAL	Operation indicated by LED on – Switch OUT.
REMOTE	Operation indicated by LED out – Switch IN

## 1.4. Operation

Operation of the CSP-N is similar to previous versions of the CSP.

Installation check-list:-

- a) The sound source (boomer plate or sparker) has been connected and that it is in the water.
- b) A key pulse is connected – either through the front panel BNC connector or through the remote input.
- c) A good earth has been connected from the ‘Safety Earth’ bolt on the front panel preferably to both the ship and a sea earth.
- d) AC mains is connected to the ‘Mains Input’ connector.
- e) A safety check has been carried out to ensure that there is no-one in the water and that crew members know that the unit is about to be operated.

Once switched on, the ‘HV OFF / RESET’ button must be pressed to reset any fault latches and the light behind the ‘Manual Key’ button is flashing in sequence with the key input signal. The output power can now be selected by using the two rotary switches as shown in the accompanying photographs. The two switches select a combination of capacitor settings (labelled 1 – 12) and voltage settings (labelled LO and HI) so the operator can choose the power setting required for the job in hand. Please see next section. Once the appropriate setting has been made, the ‘HV ON’ button can be pressed whilst simultaneously turning the ‘HV Enable’ keyswitch clockwise.

A series of up to 5 clicks will be heard depending on the energy selected as the relays switch in circuit. Once these relays have engaged, the high voltage is enabled.

If either of the power level switches is moved or if the HV off/reset button is pressed, the unit will shut down safely. In an emergency, the red ‘STOP’ button can be pressed.

The maximum repetition rate is governed by the charge rate (2000 Joules per second peak) and the amount of capacitance selected. For example, at 300J / shot the CSP-N will run at a max of 6 PPS.



## Energy Settings

CSP-N 1200 SWITCH POSITION	OUTPUT POWER	
	HI	LO
1	100	50
2	200	100
3	300	150
4	400	200
5	500	250
6	600	300
7	700	350
8	800	400
9	900	450
10	1000	500
11	1100	550
12	1200	600

CSP-N 2400 SWITCH POSITION	OUTPUT POWER	
	HI	LO
1	100	50
2	200	100
3	300	150
4	500	200
5	750	300
6	1000	400
7	1250	500
8	1500	600
9	1750	700
10	2000	800
11	2250	900
12	2400	1000

- Items marked in red are not suitable for a single boomer.



## Operation of the CSP-N with a Boomer Sound Source

A boomer plate as a sound source produces a single pulse and the amplitude and duration of this pulse is controlled by the energy going into it. The energy is derived from the voltage and the quantity of energy stored in the CSP unit. Traditionally, boomers have operated from around 3500 to 3800 volts. However a feature of the AA200 and AA300 boomer plates is that they will produce a longer pulse (and hence more penetration) with a lower voltage and higher capacitance from the energy source (CSP-D). The LO voltage setting achieves this so, for example, using an AA300 boomer plate at 200J at 3 pulses per second may be a common way of using the transducer with the traditional 3.5 kV supply voltage using switch positions 2 and HI. However if position 4-LO is used, the same energy is being applied to the transducer although at a lower voltage, so the pulse length is increased.

## Load Specifications

The CSP-N units are designed to deliver high currents into boomer or sparker type loads. The loads are quite different in make-up.

### Boomer Load

A boomer plate consists of a coil imbedded in an epoxy or plastic material and thus by its nature is an inductive load. The inductive 'kickback' is controlled by circuitry inside the CSP. Typical currents into a boomer plate are listed below:-

Energy (HI)	AA202 Plate	EG+G Uniboom
100J	800A	900A
200J	1050A	1200A
300J	1250A	1350A

The currents will vary according to the length and type of cable used between the load and the energy source. Note that the CSP-N units are specified for AAE and EG+G boomer plates and have not – to date- been tested with any other type.

Ensure that the energy and repetition rate do not over drive the sound source! (Boomer plate - check the boomer plate manual).

### Operation of the CSP-N with a Sparker Sound Source

The CSP-N is designed for use with the Dura-Spark Sparker. The CSP-N is not compatible with the Squid Sparker range of sparker sound sources due to the polarity of the power supply.

The polarity of the CSP-N reduces tip wear to a minimum ensuring a stable repeatable sound source.

A sparker consists of a number of electrodes in the (salt) water which creates a sound pulse as the plasma bubble expands. The current into a sparker varies with cable length and type as well as by the number of tips and the salinity of the water. Typical values are shown below for the Dura Spark sparker in seawater with a salinity of 35 ppm.

Energy	Dura Spark 80 Tips	Dura Spark 160 Tips	Dura Spark 240 Tips	Dura Spark 400 Tips
300J	1800A	2000A	2500A	
500J	2400A	3000A	3500A	4500A
1250J		4500A	6000A	6500A
2000J				8500A

### Operation of the CSP-N with a Non AAE Sound Source

The CSP-N is designed for use with the Dura-Spark Sparker and the AA series of Boomer Plates.

When used with sparker sound sources from other manufacturers the operator must ensure that the operational characteristics of the sparker are within the parameters of the CSP-N. It is recommended that the operator measures the discharge current level and rise time consulting with AAE before commencing survey operations to ensure reliability / compatibility.

### Dummy Load

AAE manufacture a dummy load with precisely designed characteristics which can be used for testing of CSP-N units in the workshop to avoid 'water based dummy loads'.

Please check with other sparker manufacturers whether their sparkers are compatible with the specifications laid out in this manual.

---

## 1.5. Operator Controls and Indicators

### MAINS POWER Switch

Double pole switch that also acts as an over current circuit breaker. It is situated by the mains input connector. The switch has standard O I positions.

### EMERGENCY STOP switch

In the event of an emergency the unit can be shut down. This switch shuts off the control logic of the charger thus disabling the system. Rotate to reset.

### HV OFF/RESET Switch

Needs to be pressed if fault occurs, or if someone has tampered with the controls. This button also operates as the HV OFF button. Press to switch OFF.

### HV ON Switch

Switches in capacitors and HV PSU, (note delays on switching), switch illuminates when the high voltage is switched on operated in conjunction with the HV ENABLE key switch, thus to switch HV ON, HV ENABLE needs to be enabled simultaneously.

### MANUAL KEY Switch

Triggers CSP unit when pressed. Also illuminates when an external key pulse is detected

### KEY POLARITY Switch

Used to select either:

+ve key pulse (3.5 – 20 volts, opto isolated triggers 0.5 mS from rising edge), or contact closure (triggers 0.5 mS from falling edge or closure).

### LOCAL / REMOTE Switch

Controls whether an external remote box can be used, as marked on the front panel. Note that the unit can be switched off from the front panel and the remote at any time.

### CHARGE RATE Switch (Located on rear panel)

As previously described, this switch selects the AVIP circuitry or full charge. Recommended position : IN (AVIP Engaged)

## 1.5.1 Indicators

### EOC (End Of Charge) Indicator

LED illuminated when the storage capacitors have reached their potential voltage (~2.5 to 4 kV). In this way the operator can see if the unit is being run faster than the charger can cope with. If the operator notices loss of data on the recording system, it may mean the CSP-N is being fired too quickly, not allowing the capacitors to charge to their full potential. Slowing the repetition rate down until the EOC LED flashes will ensure the appropriate voltage is reached across the storage capacitors, also the correct energy is being discharged in the sound source.

### FAULT Indicator

This indicator will normally illuminate when the unit is powered up, and will extinguish when the RESET button is pressed. It will otherwise illuminate during most faults. Please note that the fault light will not illuminate if the thermal cut-out operates in the charger module.

### INTERLOCK Indicator

Illuminated if front panel connector is left out when the unit is switched ON or if the lid of the HV junction box has not been closed correctly. The interlock LED will also illuminate if the top cover is removed. You will need to press RESET once the interlock condition has been cured.

### TIME OUT Indicator

For safety, the HV is switched OFF after a period of approximately 25 - 30 seconds without key. This also helps preserve the capacitors, as all pulse discharge capacitors are not designed to sit powered up indefinitely.

### HV FAULT Indicator

Indicates an output overvoltage, (possibly due to an open circuit capacitor), temperature fault or low input voltage condition.

### LOAD FAULT Indicator

Indicates an HV Output over current or open circuit condition. The indicator will be illuminated together with the HV OFF LED for 10secs before resetting.

## 1.5.2. Connectors

### Mains Input

200 – 250 VAC mains input. Connection details are supplied elsewhere in this manual.

### Remote

Allows operator to remotely control CSP-N.

### HV Output

4 pin proprietary connector. Using our HV2 plug, the large connector pins are proof tested to 6000 volts and can operate with current pulses up to 8000 amps. The two small pins are used as interlock pins. If these are left open circuit, the CSP-N will not be able to enable the high voltage (INTERLOCK fault).

### Trigger Input

The trigger input is connected via a BNC socket.

## 1.6. Rear Panel

### Fuses

The rear panel contains 2 fuse holders, and these are the only things we recommend the operator checks if he has not received factory training. The fuses are rated as follows:-

F1 3A Antisurge 1¼" (240V)

F2 3A Antisurge 1¼" (240V)

### Charge Rate Switch

Recommended position is OUT to make use of the AVIP circuitry.

### Fan Filters

The rear panel of the units has 2 fold-down handles to ease installation, and also has 2 fan filters for the cooling air intake. These filters should be periodically cleaned to ensure maximum air flow. This can be done with a small stiff brush.



### **SAFETY NOTICE**

All interlocks and safety features are doubled. For example, if the HV connector is removed, the HV is shut OFF by the logic board which controls the charger module AND the high voltage is switched OFF by a separate relay. The interlock circuit operates from its own isolated 12V supply and operates 2 relays, as well as the control electronics. However, it cannot be stressed enough that the operator and all those who might come into contact with this equipment treat it with extreme caution and should not take any safety feature for granted.

The unit should be disabled by removal of the key switch or removal of the mains lead or the HV Plug before any attempt is made to make any wiring changes or inspection of the load. Despite being heavily insulated, the HV cable should not be touched or held when the unit is operating. The load should always be in the water before operation. Crewmembers should be made aware of these facts during mobilisations.

### 1.7. Product Recycling / Disposal



Within the EU all electronic components and batteries must be taken for separate collection at the end of their working life under EU WEEE directives. Applied Acoustics as a manufacturer within the EU will responsibly dispose of any returned end of life Applied Acoustics components / batteries through a registered WEEE scheme. In order to prevent uncontrolled waste disposal and promote re-cycling please return any end of life Applied Acoustic components postage paid by sender to our UK head office. Please contact Tech Support for a RMA number prior to shipping.

## 1.8. Specifications

### CSP-N Series Capacitor Discharge Power Supplies

#### Models Available

CSP-N 1200	:	2000J/s at up to 1200J/shot. Peak charge rate.
CSP-N 2400	:	2000J/s at up to 2400J/shot. Peak charge rate.

#### Physical Specifications

Size	:	19" Rack Mount 7U high excluding shock mount housing.
Weight	:	52 kg CSP-N 1200 54 kg CSP-N 2400

#### Electrical Specifications

Mains Input	:	207 - 260 V 1 phase. 45 - 65 Hz @ 4 kVA.* 3-Pin connector.
Voltage Output	:	2700 to 4000 volts DC.
Output Power	:	1200J, 2400J By 4-Pin connector (Power and interlock)
Selection	:	Rotary switches.
Trigger	:	+ve key (+5 to 25V rising edge) opto isolated or contact closure. Set by front panel switch.
Discharge Method	:	Semiconductor module.
Maximum Current	:	A current sensor ensures that the unit shuts down beyond Approximately 9000 Amps
Remote	:	10 way Amphenol.
Earth	:	M8 stainless stud on front panel.

\* SEE TEXT ABOUT GENERATOR SELECTION.

---

## Safety Features

Should any fault develop, the high voltage PSU (Charger) and all capacitors (which have bleed resistors) are individually dumped to ground, until the system is reset. A double layer of safety cut-outs ensure that partial failure results in system shutdown.

Interlocks	: Dumps high voltage when fault develops.
Time Out	: Shut down after period (~30 seconds) without key pulse.
Local/Remote	: Disables remote (if fitted).
Load Fault	: Shuts down HV upon open circuit load or load over current.
Reset	: Resets unit after fault or if interlock activated.
Key switch	: Must be rotated to enable high voltage. Switch can be removed to disable unit for example when working on deck.
Thermal shut-down	: HV charger shuts down if it overheats.

## Options

Remote	: Allows operator to control unit at a distance. Includes key pulse line.
Junction Box	: For connection of standard transducer cables to HV connector.
Shock Mount Housing	: For transportation and operation. (Recommended.)
Transit Case	: For storage and transportation. Foam lined.
Field Spares Kit	: For trained technicians only. For servicing units in the field.

*Although correct at time of printing, these specifications are subject to change without notice.*



## Section 2 - TROUBLESHOOTING

### 2.1. Introduction

The CSP-N has been designed so that the operator does not need to remove the top cover for any operational adjustments. The top cover should only be removed by factory trained personnel, and the following points should be noted.

The safety features have been over-engineered for safety, but should not be relied upon:-

- An earth wand - connected to the front panel ground and ship ground should be used to ensure any high voltage inside the unit is dissipated.
- Call the factory for advice if you are unsure about anything!

An earth wand can be supplied if required.

---

## 2.2. Circuits and Descriptions

The following pages give brief circuit descriptions for major items inside the CSP Unit itself. The descriptions should be read in conjunction with the diagrams (Schematics).

The CSP-N is part of the CSP range of seismic power supplies and shares common chassis components as the CSP-D, -P, -S therefore there are references made to these parts and drawings.

### System Overview

The control board handles operation of the complete system and can be considered to be electrically the '*heart*' of the unit. It controls the operation of the charger with various control lines, as well as switching the storage capacitors in and out of circuit; driving the triggering module for the thyristor and accepting safety information from interlock switches such as the controls on the front panel connector. As a back-up to this board, a separate 'layer' of control electronics - relays from an additional isolated supply - are used to disable the capacitor charger supply.

The CSPN Unit is designed for minimal operator intervention. The term, 'No user serviceable parts', does really apply!

Access to the inside of the unit is initially through the top cover. Ensure that the AC supply is disconnected - remove the AC plug from the front panel and then remove the lid securing screws. Note that one of these is longer than the rest. It is this longer screw which controls the lid interlock switch mounted on the left-hand side plate. There are quite a number of screws for the lid. This is a feature recommended by UK HSE (Health and Safety Executive) to deter easy access to the unit! It also is part of the electrical shielding of the system.

Once the lid is removed, access to the high voltage parts is achieved. We remind the reader that we cannot be responsible for any errors or omissions by the manufacturer or any errors by the operator after the top cover has been removed.

---

## High Voltage Section

The right side of the unit contains the high voltage parts. Each capacitor is switched in and out of circuit by 12 kV rated, spring relays. The relays use a rotating moving contact which is silver plated. The fixed contacts can be rotated in the event of wear. When disconnected, the capacitors are discharged through the relays to ground via 10k  $\Omega$  resistors, which are mounted on a circuit board on the RH panel. Although physically small, these resistors can handle 2000J pulses at well in excess of the rated voltage of the unit. It should be noted that the average power these resistors can tolerate is 6 watts. Repeated discharge of the capacitors into these components will cause them to fail.

A specially designed high current thyristor switch is used in the CSPD , interfaced to the control board by an interface board. This is held in place with an isolated clamp arrangement manufactured from Nylon 66.

Note: All models operate at approx 4KV.

## HV Monitor Board

Using a shunt resistor and current sensor the HV monitor circuitry monitors the output current to prevent excessive load currents damaging components. The circuitry also monitors the HV voltage to detect open circuit load conditions where the energy has not been discharged. Upon detection of the above faults the board flags a LOAD fault to the control board, this fault is automatically reset after 10secs in order to warn the operator of a possible fault with the load thus preventing damage to internal circuitry.

## HV Detect Board

This board using a HV resistor voltage divider via opto isolator provides voltage feedback to the HV Monitor board on the charge status of the capacitors to detect an open circuit fault condition. The board also contains diodes to protect the output bridge of the charger from reverse voltage swing. There is also a set of high current diodes which are used to limit the amount of reverse voltage swing on the output of the unit.

## HV Charger

The HV Charger is fitted under the large storage capacitors and runs from the rear (where air is brought in) to the front of the unit. The charger is designed as a module, and we would not expect that field servicing could be carried out on this unit.

To gain access to the charger, the rear panels will need to be lowered.

Connections:-           L2 - LINE  
                                  COM – NEUTRAL  
                                  GROUND

## AC Section

The AC Section is to the left of the charger. Access to it can be gained by firstly removing the capacitor support clamp and then taking out the screws which hold the LH panel in place. Note that you will also have to disconnect or remove the interlock switch.

Once the LH panel has been removed you will see (from front to back) the AC mains filter, 2 control relays, a separate 12 V power supply for these relays, a solid state control relay and a 90-250VAC, 12VDC power supply, as well as 2 fuses which can be accessed from the rear panel. These fuses are:-

F1	3A Slow blow 1¼"
F2	3A Slow blow 1¼"

F1 Protects 12v power supply

F2 Protects the relay board and line voltage powering the high voltage relays, also the front panel fans.

## Control Board and Front Panel Components

The control board is mounted on an aluminium plate which is mounted vertically 50mm behind the Front Panel.

Descriptions of the control board and the front panel items - such as power selector switch and display board are detailed later in this section.

The following *Troubleshooting Guide* can be used to assist the operator in identifying any malfunction.

---

## Control Board

Drawing No: CSP-1000-5000 - Section 3

## Key Board

Drawing No: CSP-CSPD-5109 - Section 3

The power supply can be triggered using any of the following:-

1. *Key in* is via the BNC connector on the front panel. The key source is opto-isolated, and this can be either a pulse (3-24VDC) or a contact closure, selectable using the key polarity switch on the front panel.
2. *Remote key in* is via the remote box and cable (3-24VDC positive key only). Key source is opto-isolated from the power supply.
3. *Manual key* - each time the switch is depressed.

The Key In / Remote Key signal is applied to the key board optically coupled via OP1 and OP2 to IC1A on the control board. IC1A generates a 150mS delay preventing repetition rates in excess of 6 times per second. The output of IC1A triggers IC1B which produces a 1mS pulse to key the trigger board via the driver IC4.

IC2 is configured as a *time out* alarm. If there is no key input after 20.25 seconds, the Fault / Time Out LEDs on the front panel will illuminate and the high voltage will be disabled.

A 10mS pulse is generated via IC8A inhibiting the high voltage charger during and after the firing of the ignitron. IC4 is also used to drive the HV ON / OFF and Key LEDs on the remote box.

## High Voltage / Relay Switching

Drawing No: CSP1000-5000 - Section 3.

The high voltage capacitors are switched in / out of circuit using the Output Power Switch located on the front panel. The power select switch is connected via the front panel board to IC3 on the control board. When the high voltage button is pressed, (providing no fault conditions occur), an 0 on any of the switch inputs will allow that capacitor to be placed in circuit.

For Capacitor 1 in the diagram; with no fault latches activated, IC11D O/P is high allowing 11A O/P to be high. IC9A generates a ½ second delay before allowing relay RLA to close via IC10A. RLA closing connects 115VAC to the high voltage relay, switching the HV capacitor in circuit.

IC7B produces a 3 second delay after the high voltage button is pressed, before the HV is activated. Relay RL1 controls the HV ON / OFF in the charging unit. ICs 9A, 9B, 8B and 7A all provide a small time delay, (less than 3 seconds), allowing the HV capacitors to be in circuit before the charger high voltage is connected. The sequential delays for switching these relays is to ensure large current pulses are not drawn from the toroidal transformer.

## Fault Latches / HV on Circuit

Drawing No: CSP1000-5000 - Section 3.

A reset / fault condition can occur due to any of the following:-

1. High voltage connector to transducer not being connected while power supply is switched ON.
2. The top cover has been opened or left OFF with power supply switched ON.
3. The power supply has not received a key for approximately 20 - 25 seconds.
4. The output power switch has been changed.
5. A failure on the 12V logic supply.
6. There is an open circuit on the output cable or load.
7. There is a short circuit on the output cable or load.
8. The Emergency Stop button is engaged.
9. The output thyristor module has over heated.

If the high voltage connector is disconnected or top cover left off, the mains relay located under the left side panel will open, disconnecting mains to the charger. (See Relay Board, Section 3)

Any high voltage within the charger is then dumped via an internal resistor network. The input to IC5A via opto-isolator OP4 will go high, setting the RS latch. IC5 output is fed to IC6 (8 input OR gate). A logic 1 on any of the inputs will activate the OR O/P, Pin 1. This resets IC5D, which holds the O/P of IC11D low.

With IC11D O/P low, all the capacitor switching relays RLA-D (see HV / Relay Switching Circuit) are deactivated. Any high voltage relays in circuit will open, discharging the high voltage capacitors to ground via 10K dump resistors situated on the right side panel.

IC11D O/P at logic 0 also stops the key to the trigger board via IC4 Pin 8 and disables the charger ON / OFF relay RL1 by resetting IC7B.

The O/P from the time out alarm IC2 is fed to IC6 via RS latch IC5B. An input to IC6 is also provided from the front panel board resetting the system if the power select switch is operated independent of high voltage status. (Reset circuit shown on front panel board.)

The HV OFF / RESET switch on the front panel connects to IC6 via IC3C. The fault LED situated on the remote box is controlled by D3/D7 acting as a diode OR gate, with Q2 as driver transistor.

---

## High Voltage On Circuit

The high voltage can be activated from the power supply front panel, or remotely from the instrument room using the remote box and cable. Both switches are controlled using the Remote / Local (R/L) switch on the front panel.

With the switch in local the high voltage can only be operated from the power supply front panel, disabling the remote HV ON button.

If the R/L switch is in remote, the power supply can only be operated from the instrument room, also disabling the front panel HV ON button. The high voltage OFF button will still operate regardless either from the front panel or on the remote box if pressed.

The HV ON switch is connected to IC5D on the control board. Providing there is no fault condition, RS latch IC5 is set, sending its O/P high. The 8 input OR gate IC6 also has a NOR function Pin 13. With no faults or resets (logic 1s) on the I/P, the NOR O/P on Pin 13 will be high sending the O/P of AND gate 11D high. This will then allow any high voltage capacitors to be switched in circuit via the HV relay control circuit.

IC7B is also triggered, generating a 3 second delay before the high voltage from the charger is activated.

## Front Panel Board

Drawing No: CSP-CSPD-5100 - Section 3.

The front panel (FP) board contains driver circuits for LEDs on the CSP front panel. Most of the panel switches are connected to the control board via the FP board.

The HIGH VOLTAGE ON and EOC (End Of Charge) LED inputs, are controlled directly from the Charger. OP1/2 provide isolation between the FP board and the charger.

The output power switch is monitored by a reset circuit comprising IC1 (4 I/P OR gate) and IC2 (RS latch). Whenever the O/P power switch is operated, one of the inputs to IC4 will go high, sending the output high and setting the RS latch. The output is connected to the HV OFF / RESET circuit on the control board, which will then reset the CSP power supply.

## Interlocks / Relay Board

Drawing No: CSP1000-5002 - Section 3

The mains input for the high voltage charger is routed via a contactor controlled from the relay board located under the left side panel. A small mains transformer and rectifier provide 12VDC to operate the contactor relay.

Mains to the transformer is connected via a micro switch situated on the left side panel. The micro switch disconnects power to the transformer when the top cover is removed. With the cover off, the charger has no mains power connected.

**TO ENSURE CORRECT OPERATION OF THE POWER SUPPLY, THE TOP COVER MUST BE SECURED IN PLACE. A special 20mm hex screw is provided to operate the micro switch, THE 20MM SCREW NEEDS TO BE PLACED IN THE FRONT POSITION ON THE TOP LEFT HAND SIDE OF THE UNIT.**

**FAILURE TO SECURE THE COVER USING THE 20MM SCREW WILL RESULT IN A FAULT CONDITION ON THE FRONT PANEL OF THE POWER SUPPLY!**

The 12VDC output from the rectifier is connected to the relay via an interlock on the high voltage socket. With the high voltage connector removed or disconnected, the relay is de-energised, disconnecting mains power to the charger.

**FOR CORRECT OPERATION OF THE POWER SUPPLY, THE HIGH VOLTAGE CONNECTOR MUST BE FITTED AND TOP COVER SCREWED DOWN.**

If the top cover or high voltage connector is left off, the FAULT and INTERLOCK LEDs will illuminate on the CSP front panel, resetting the system.

A second contactor relay will disconnect mains power to the high voltage charger, if a problem occurs in the 12VDC logic supply to the control and front panel boards.



## 2.3. Repair and Fault Finding on CSP Power Supplies

*It is not recommended that any internal repairs are undertaken to any CSPD by anyone other than a suitably qualified engineer. AAE can take no responsibility for loss or injury caused by repairs that have not been performed either within our own Laboratories or by our own registered service agents.*

During diagnosis procedures it is recommended that the power selection switch is placed at 100J and a suitable Transducer or Dummy Load is attached to the output.



### **SAFETY NOTICE**

**It is also imperative that the HV Charger main supply is disconnected when any adjustments are made within the unit.**

**Even with the supply disconnected lethal voltages may be present, so use extreme caution when making any adjustments or measurements.**

**Make sure that a responsible assistant is present to prevent people from walking into the service area. They should also be capable of taking the correct actions in the event of an emergency.**

**Try to keep one hand in your pocket at all times and wear non-conductive footwear.**

**IF IN DOUBT / DONT**

---

## 2.4. CSP-N Basic Fault Diagnosis

### Unit Dead

First check the integrity of the mains supply fuse and the mains supply itself, if the fuse itself has blown try the following components:

- Mains Circuit Breaker?
- Input Mains Filter?
- Damage to the input power wiring?

### Unit Fans Operate, but no front Panel indicators

Check fuse 1 on the rear panel, (this is the supply fuse to the internal 12V PSU), if O.K try the following:

- Internal wiring to the 12V PSU
- Replace the 12V PSU

### 12V PSU O.K., but still no front panel indicators

Ensure that LED 3 on Control Board is illuminated, if not, suspect the following:

- Wiring between 12V PSU and the control board

### If LED 3 is illuminated

- Replace Control Board
- Replace Front Panel Board
- Check interconnect wiring between these sub-assemblies

### Fans Do Not Operate

Check integrity of Fuse 2 on rear panel, if O.K.:

- Check Mains Wiring To Fans
- Check Wiring to Relay Board

### Fans Operate, But Pronounced Delay between Power up and Front Panel Illumination

Replace 12V PSU

### Unit Powers up Normally, Fault Lamps do not go out on pressing Reset

Ensure Interlock screw is present in top panel and is correctly operating the Interlock switch. A distinct audible CLICK may be heard when switch is activated/de-activated. Also check the interlock switch within the Transducer connector.

Wait 10sec for load fault to self-reset depending upon logic state upon power up fault may be reported.

Also:

- Check Interlock switch within power cable junction box
- Replace Interlock Relay
- Replace Relay Board
- Replace Control Board
- Check ancillary wiring

---

### **Unit Resets as Normal, HV Will Not Select**

Check position of Remote/Local switch. Also:

- Replace Control Board
- Replace Front Panel Board
- Replace Front Panel Power Selection Switch

### **HV Relays Operate but no EOC Lamp**

Suspect HV Charger or HV BNC charger cable. Also:

- Charger Power Switching Relay
- Control Board
- Output Thyristor
- Storage Capacitors
- HV Diodes
- Auto Power Control Board

### **EOC Lamp Illuminates, but unit Will Not Discharge**

Check for presence of Input Key Pulse and position of Key Polarity switch. Is key Lamp Illuminating in unison with Input Key pulse?, if not suspect Input Key Board. Also:

- Control Board

### **If LED2 on Control Board is Illuminating in Conjunction with Input Key, but unit still not discharging no load fault reported**

- Check Thyristor Interface board and thyristor.
- Check cabling to Thyristor interface board and thyristor.

### **Upon discharge Load fault reported and unit shuts down**

- Check load for continuity.
- Check load for short circuit, unit will shut down if current greater than 4500A.

### **EOC and HV Fault Lamp Illuminated**

Open circuit on HV Charger output. Also:

- Open Circuit Energy Storage Capacitor (Verify by trying alternative power setting).

### **HV Fault Illuminated, No EOC**

HV Charger Faulty, Also:

- Short Circuit Energy Storage Capacitor (Verify by trying an alternative power setting).

### **No Warning Lamps Illuminated, No EOC and No Output**

Press Charge Rate switch, if Unit now operates then Auto Charge Control board is faulty.

### **Unit Fires On Alternative Key Pulses**

Input Key Rate too high.

## 2.5. Troubleshooting Guide

### **POWER SELECT SWITCH SHOULD BE LEFT ON 100 JOULES**

**This section is to be carried out by trained personnel only and undertaken in a safe environment. A transducer or dummy load should be connected to the unit, prior to these tests.**

Problem	Possible Fault Condition	Test	Action
Unit fails to discharge with High Voltage and EOC LEDs on.	No Key Input to CSP Unit.	Check connection from key source.	-
-	Key LED flashing & LED 2 on control brd is flashing.	Check connection to / from Thyristor Int Brd. Check for presence of TTL trigger pulse with oscilloscope on ZD1 on Thyristor Int Brd.	Repair cabling if required.
-	If all LEDs are correct and load is properly connected, there may be a problem with the thyristor.	Check 5Vdc on Thyristor Int Brd.	Replace thyristor.
High Voltage LED will not light after pressing 'HV ON'.	Remote / local Switch switched to remote, not allowing operator to turn HV on from the unit.	Check Local / Remote Switch.	Change if required.
End Of Charge LED fails to light when unit is firing.	CSP is being fired too quickly.	Slow firing rate and observe EOC LED.	Slow the firing rate until EOC LED is flashing allowing capacitors to reach full charge.
Unit fails to discharge at 100J setting.	Capacitor / Relay problem.	Listen for 100J relay to click in when HV ON button is pressed. Check HV is OK by trying on a different power setting. (200J). If relay clicks in, and unit operates at different power setting, a faulty capacitor could be the problem.	Substitute capacitor.

**Before carrying out the following checks, remove AC power to High Voltage Charger by disconnecting the yellow crimp connectors on the large relay located below and to the left side of the Control Board. This will disable the 4kV supply.**

**POWER SELECT SWITCH SHOULD BE LEFT ON 100 JOULES**

**This section is to be carried out by trained personnel only and undertaken in a safe environment.**

Problem	Possible Fault Condition	Test	Action
OFF / ON circuit breaker snaps open on power up.	Mains filter defective.	Check for S/C between live / neutral and ground.	Replace mains filter if required.
-	Mains wiring problem.	Check with ohm meter mains wiring to unit.	Correct if necessary.
Circuit breaker OK, no LEDs on front panel.	Fuse F1 open circuit (O/C).	Check with ohm meter.	Replace.
-	No O/P from 12V PSU.	Remove LHS panel and measure O/P from PSU located to the rear of unit.	Check internal fuse. If faulty, replace. If OK replace board.
-	Problem with control board.	Remove PL1 (12V I/P to board) and measure 12VDC on plug.	If 12VDC is present replace control board.
-	Problem with front panel board.	Check for 12VDC on board.	Replace board.
-	Broken connection(s) between control and front panel boards.	Using DVM set to ohms range, check for continuity of wiring.	Correct if required.
Fault and Interlock LEDs stay lit after reset button pressed.	Top cover micro switch not closed.	Replace lid and screw in place.	Re-check after lid is replaced.
-	High voltage connector not fully mated.	-	Check.
-	Lid of junction box (if being used) not in place.	Close lid.	Re-check.
-	Also no front panel fans operating.	Check fuses F1 and F2 with ohm meter.	-
-	Relay PSU board U/S.	Remove LHS panel. Measure 240VAC with meter on Pins 1 & 2 of PL1. Measure 12VDC on PL1 Pins 8 (+ve) and 9 (-ve).	Replace if DC voltage is not present.

Problem	Possible Fault Condition	Test	Action
When HV ON button is pressed HV LED comes on (after approximately 3 seconds) but HV relay(s) do not operate.	Fuse F2 blown.	Check with ohm meter.	Replace.
-	Control board faulty.	-	Replace.
-	High voltage relay faulty.	Switch power select SW on front panel to 200J.	If this relay operates, 100J relay may be faulty. Check wiring from control board. If wiring OK a new relay may be required.

## 2.6. Maintenance Check List

This checklist is intended as a recommended checklist to ensure safe and correct operation of the CSP Power Supply. It is intended for trained engineers only. Please refer to system manuals, CSP documentation or contact Applied Acoustic Engineering if you require assistance. Applied Acoustic Engineering cannot be held responsible for any equipment damage or personnel injury whilst following this checklist, this is at the operators own risk.

CSP(P/D/N/S) S/N : ..... Engineer(s): .....

Date: ..... .....

### EXTERNAL INSPECTION

- Check rear air intake grills are clear for good air flow. Check front fans operate.
- Check HV connector on front panel clean and multi-lam intact
- Check all Front Panel Controls / Indicators are secure and operational
- Check earth connection on front panel electrically and mechanically secure.

Yes	No
<input type="checkbox"/>	<input type="checkbox"/>
<input type="checkbox"/>	<input type="checkbox"/>
<input type="checkbox"/>	<input type="checkbox"/>
<input type="checkbox"/>	<input type="checkbox"/>

### INTERNAL INSPECTION / TEST

- Inspect HV Relay contacts – clean or rotate as required.
- Check HV and GND connections are secure. (HV Cap, Relay, HV Detect, Dump Board)
- Inspect HV Capacitors – replace capacitor with any bulging / distortions.
- Measure each HV Capacitor. Replace any +/-10% of marked value.
- Measure Dump resistor value to each capacitor.
- Remove any debris / moisture from internal chassis prior to reassembly.
- Ensure all panel screws are tight and in place.

<input type="checkbox"/>	<input type="checkbox"/>
<input type="checkbox"/>	<input type="checkbox"/>
<input type="checkbox"/>	<input type="checkbox"/>
<input type="checkbox"/>	<input type="checkbox"/>
<input type="checkbox"/>	<input type="checkbox"/>
<input type="checkbox"/>	<input type="checkbox"/>
<input type="checkbox"/>	<input type="checkbox"/>

Notes:

## SECTION 3 – CIRCUIT AND BLOCK DIAGRAMS

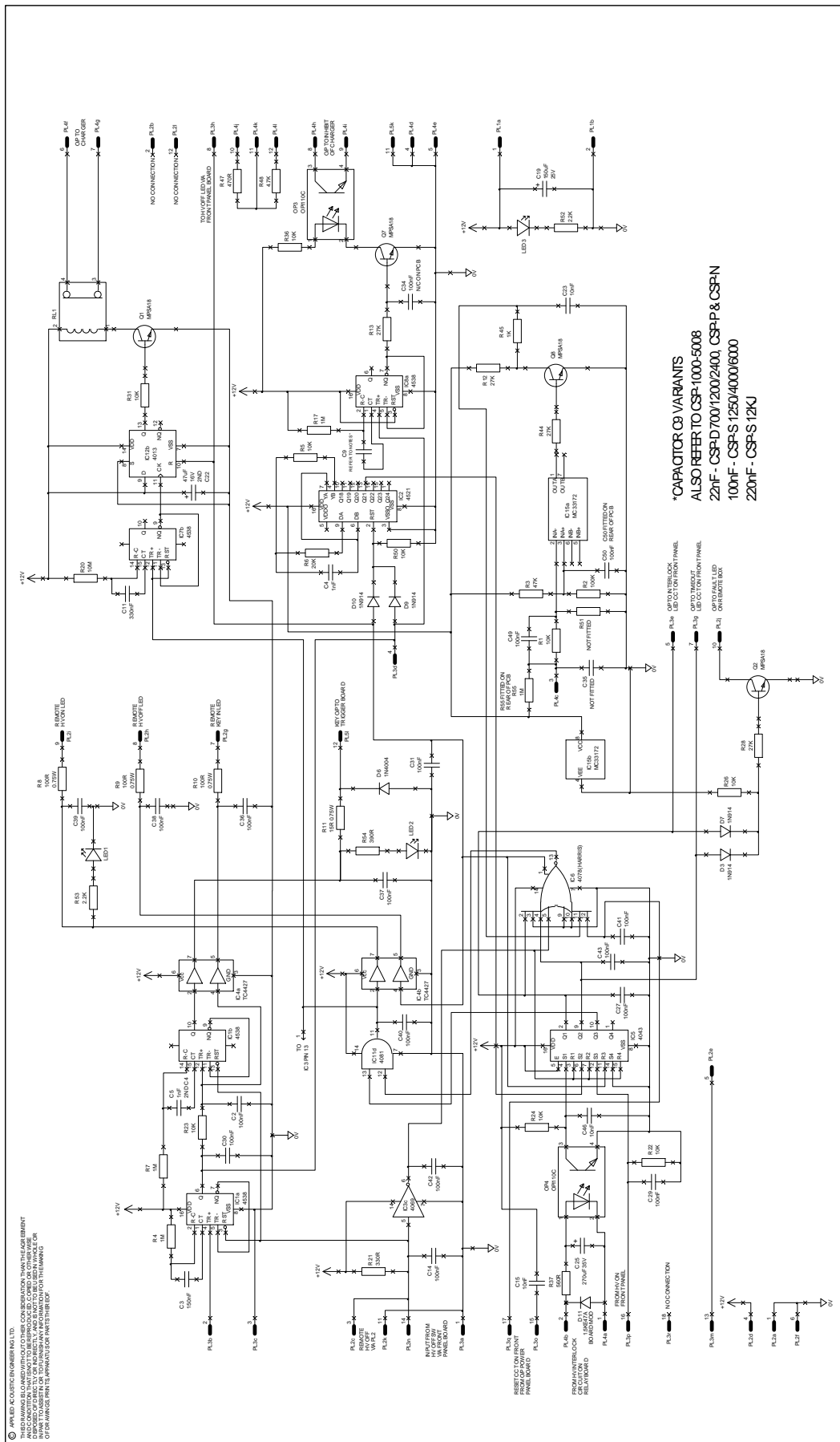
### 3.1. Introduction

Section 3 contains schematics only. For circuit descriptions refer to Section 2.

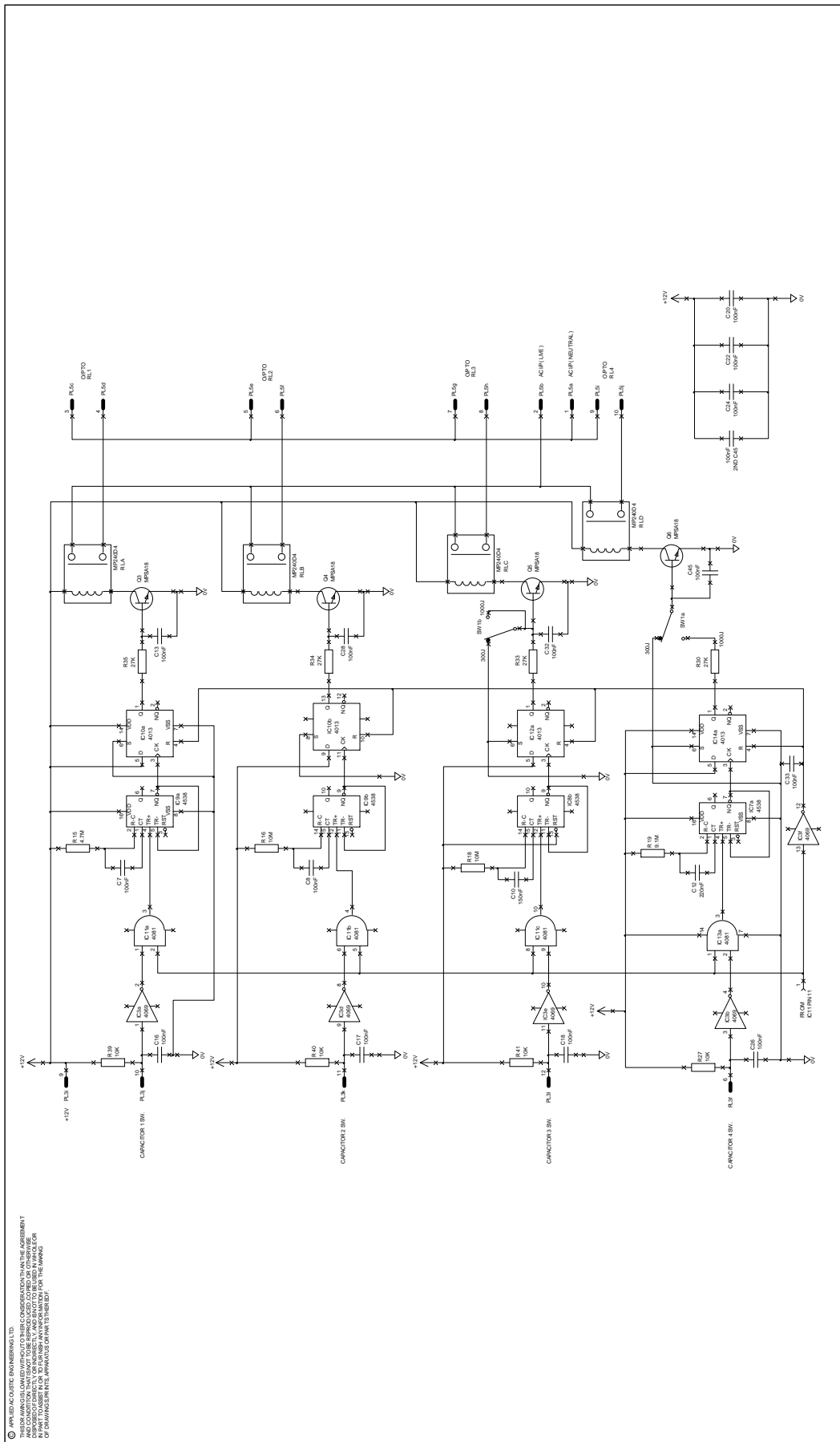
#### Circuit and Block Diagrams Index

	<b>Drawing No</b>	<b>Rev</b>	<b>Description</b>	<b>Page</b>
<b>1</b>	CSP-1000-5000	4	CSP Control Brd Schematic 1 of 2	41
<b>2</b>	CSP-1000-5000	4	CSP Control Brd Schematic 2 of 2	42
<b>3</b>	CSP-1000-5002	1	CSP Relay Brd Schematic	43
<b>4</b>	CSP-CSPD-5109	2	CSPD Key In Brd Schematic	44
<b>5</b>	CSP-1000-5005	2	CSP AVIP Brd Schematic	45
<b>6</b>	CSP-CSPD-5100	2	CSPD Front Panel Brd Schematic	46
<b>7</b>	CSP-CSPD-5101	3	CSPD HV Detect Brd Schematic	47
<b>8</b>	CSP-CSPD-5102	5	CSPD HV Monitor Brd Schematic	48
<b>9</b>	CSP-CSPD-1000	1	CSPD Component Support Plate	49
<b>10</b>	CSP-CSPD-1003	1	CSPD Mains Supply Wiring	50
<b>11</b>	CSP-CSPD-1002	1	CSPD 12V DC Wiring	51
<b>12</b>	CSP-CSPD-4021	3	CSPD Control Wiring	52
<b>13</b>	CSP-CSPN-4000	A	CSPN HV Wiring	53
<b>14</b>	CSP-CSPD-1001	1	CSPD Capacitor Arrangement	54
<b>15</b>	CSP-CSPD-1011	1	CSP High Voltage Plug Assembly	55
<b>16</b>	CSP-CSPD-1012	1	CSP High Voltage Plug Component Asy	56
<b>17</b>	CSP-CSPD-3002	1	CSP Junction Box HV Cable	57
<b>18</b>	CSP-CSPD-4022	3	Remote Box Wiring	58
<b>19</b>	CSP-CSPD-4024	1	Remote Cable Wiring	59



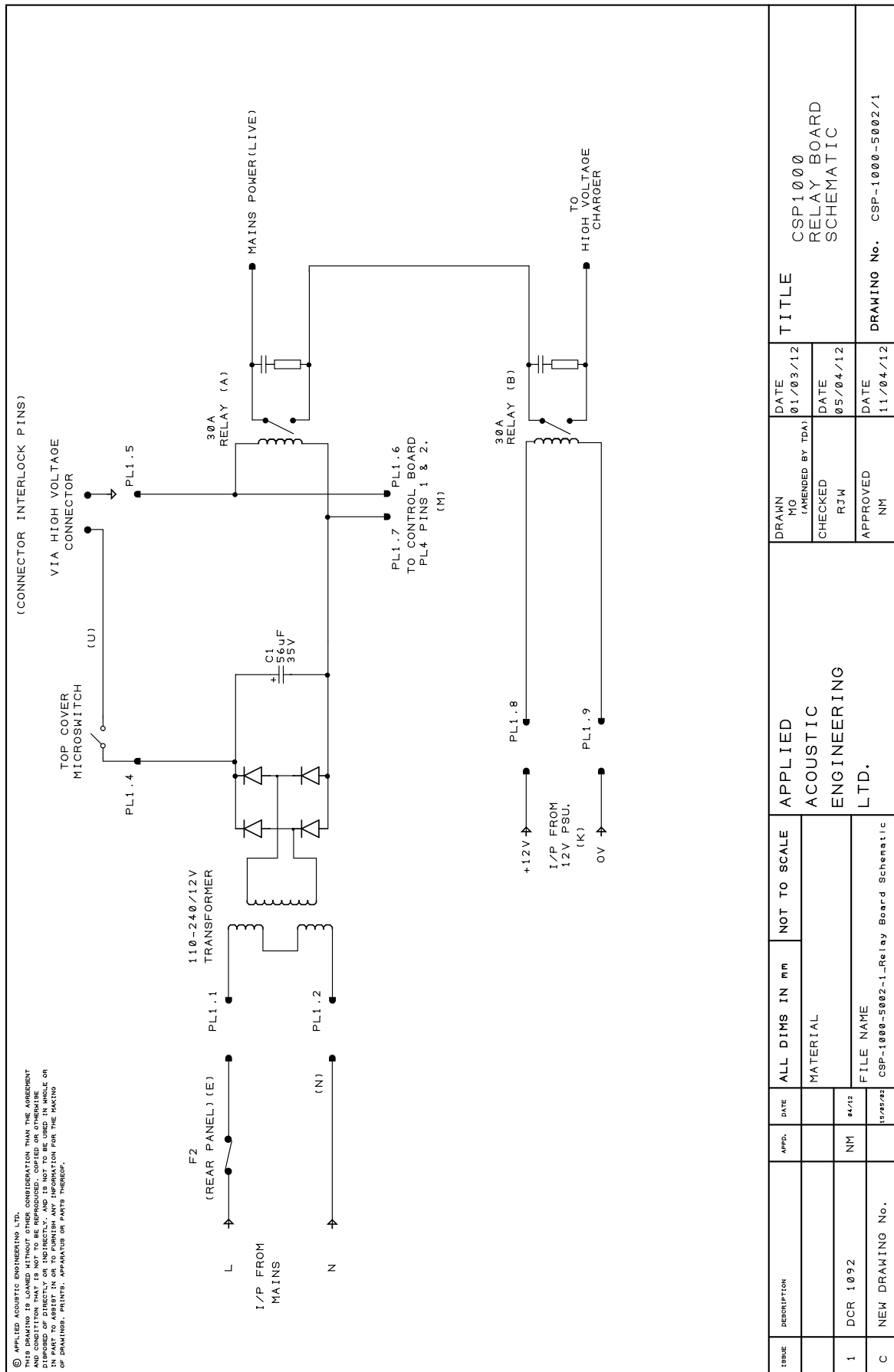


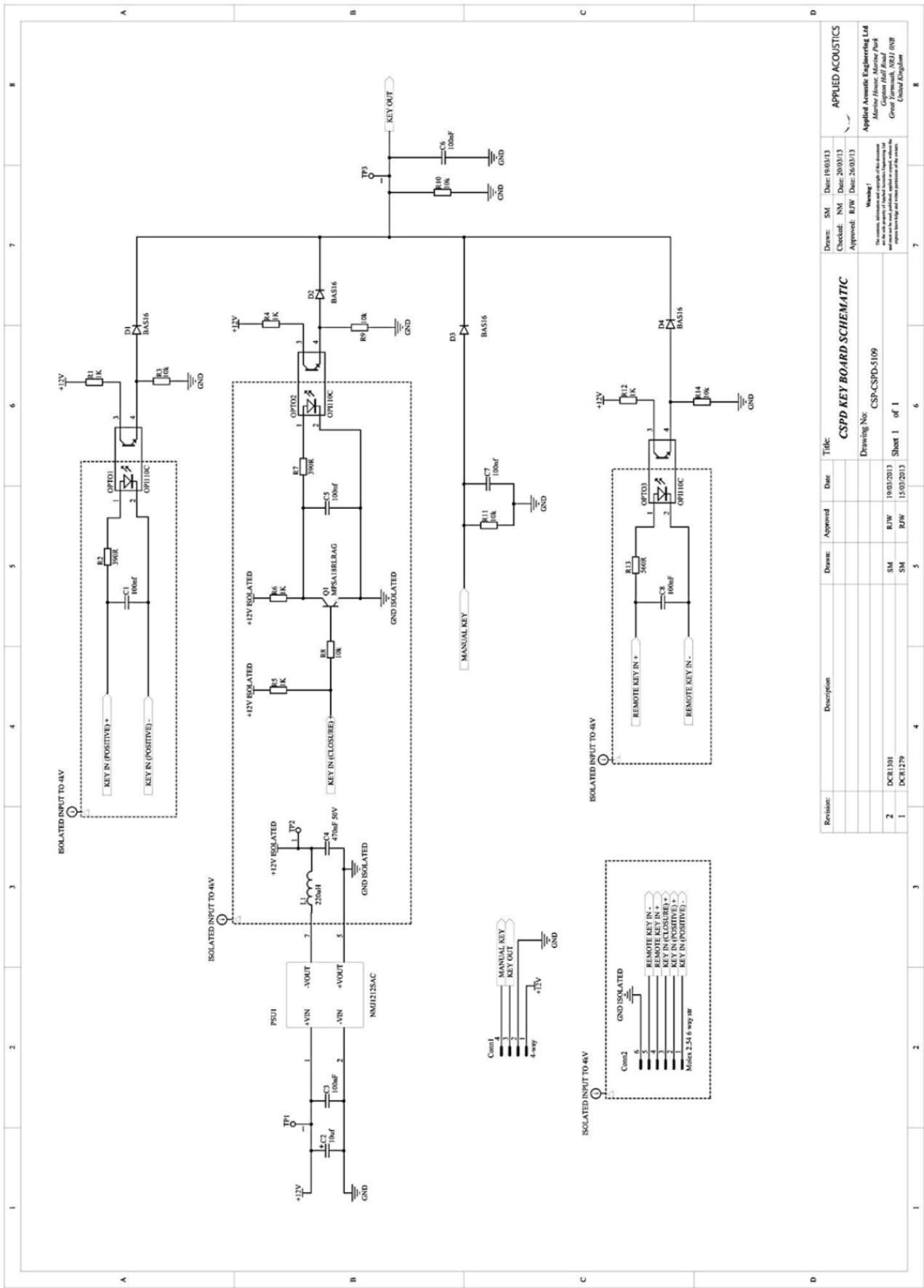
ISSUE	DESCRIPTION	APPROVED	DATE	ALL DIMS IN mm	NOT TO SCALE	APPLIED ACOUSTIC ENGINEERING LTD.		DRAWN	TDA (REVISED BY)	DATE	TITLE
						FILE NAME	APPROVED				
4	DCR 1461	RJW	09/14	MATERIAL				CHECKED	NM	25/04/14	CSP1000 CONTROL BOARD CIRCUIT DIAGRAM SHEET 1 OF 2
3	DCR 1461	NM	02/14					APPROVED	RJW	25/04/14	
2	DCR 1174	APD	3/07								DRAWING NO. CSP-1000-5000/4

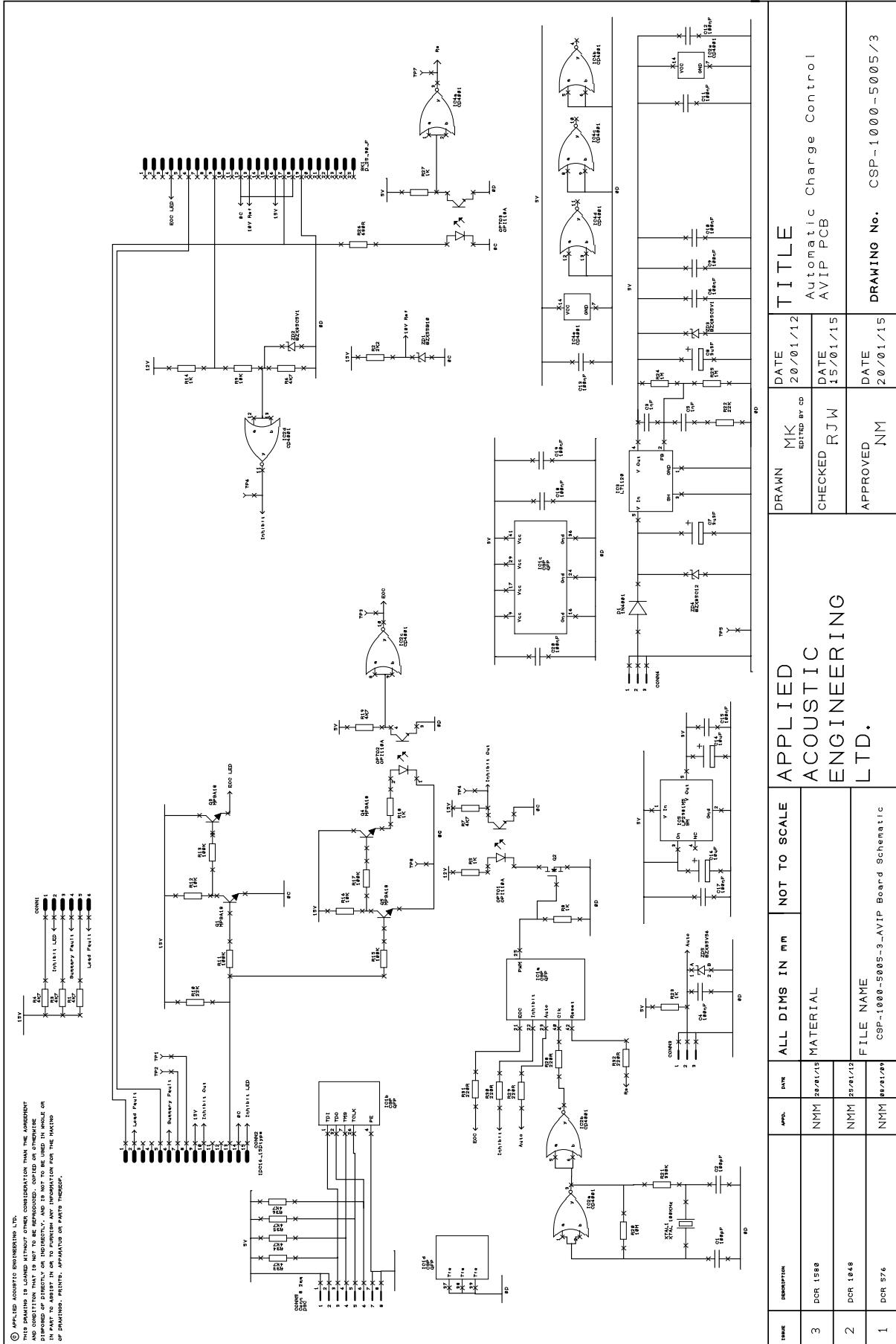


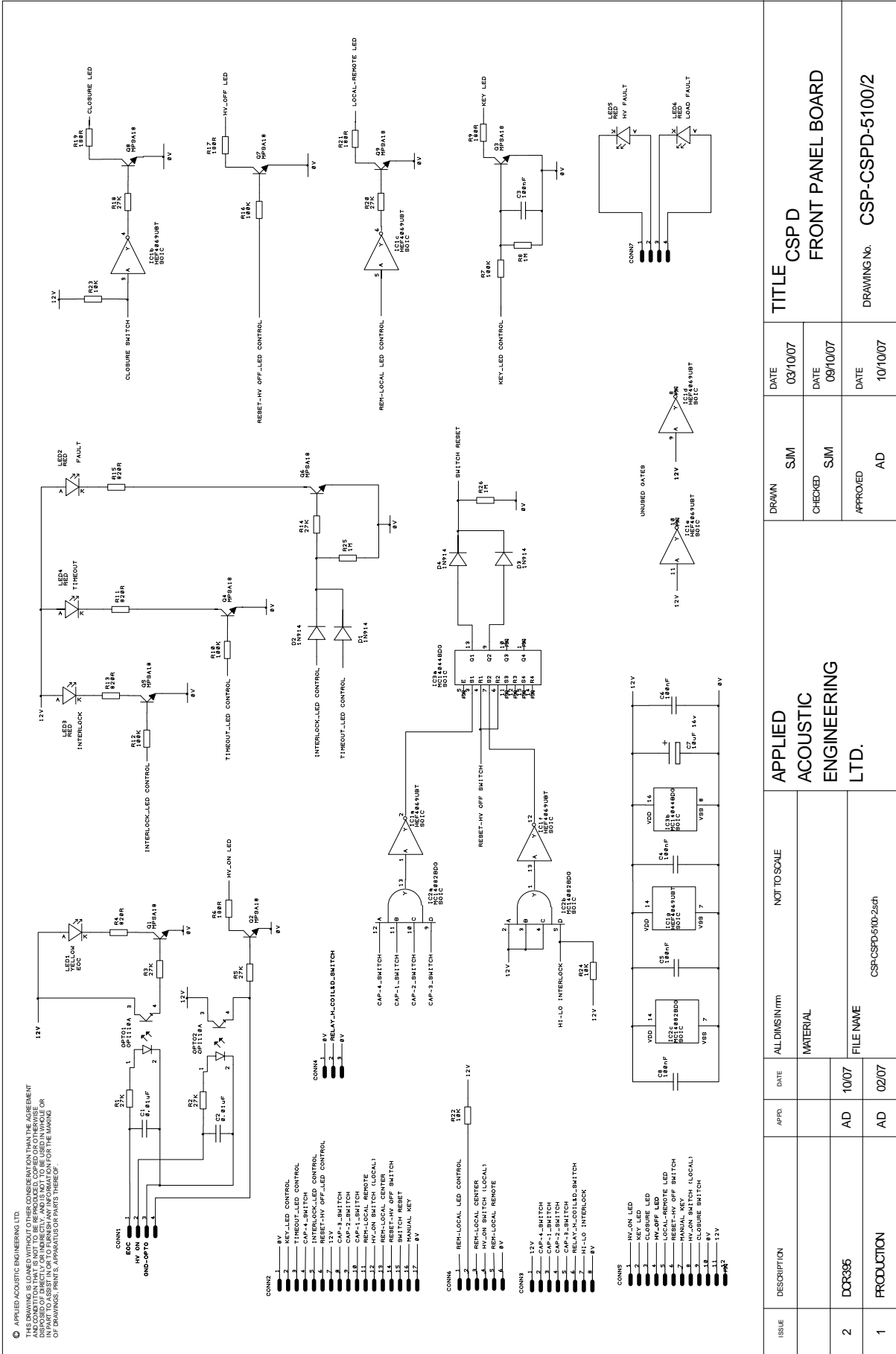
© APPLIED ACOUSTIC ENGINEERING LTD.  
 THIS DOCUMENT IS THE PROPERTY OF APPLIED ACOUSTIC ENGINEERING LTD. AND IS NOT TO BE REPRODUCED OR TRANSMITTED IN ANY FORM OR BY ANY MEANS, ELECTRONIC OR MECHANICAL, INCLUDING PHOTOCOPYING, RECORDING, OR BY ANY INFORMATION STORAGE AND RETRIEVAL SYSTEM. ANY UNAUTHORIZED REPRODUCTION OR TRANSMISSION OF THIS DOCUMENT IS STRICTLY PROHIBITED AND WILL BE PROSECUTED TO THE FULL EXTENT OF THE LAW.  
 IF YOU HAVE ANY COMMENTS OR SUGGESTIONS FOR IMPROVING THIS DOCUMENT, PLEASE CONTACT US AT: 01453 810000.

ISSUE	DESCRIPTION	APPD.	DATE	ALL DIMS IN mm	NOT TO SCALE	APPLIED ACOUSTIC ENGINEERING LTD.		TITLE	
4	DCR 1461	RJW	01/14			DRAWN TDA (AMENDED BY)		DATE 17/04/14	CSP-1000 CONTROL BOARD CIRCUIT DIAGRAM SHEET 2 OF 2
3	DCR 1431	NM	02/14			CHECKED NM		DATE 23/04/14	
2	DCR 1174	APD	3/07			APPROVED RJW		DATE 23/04/14	DRAWING No. CSP-1000-5000/4

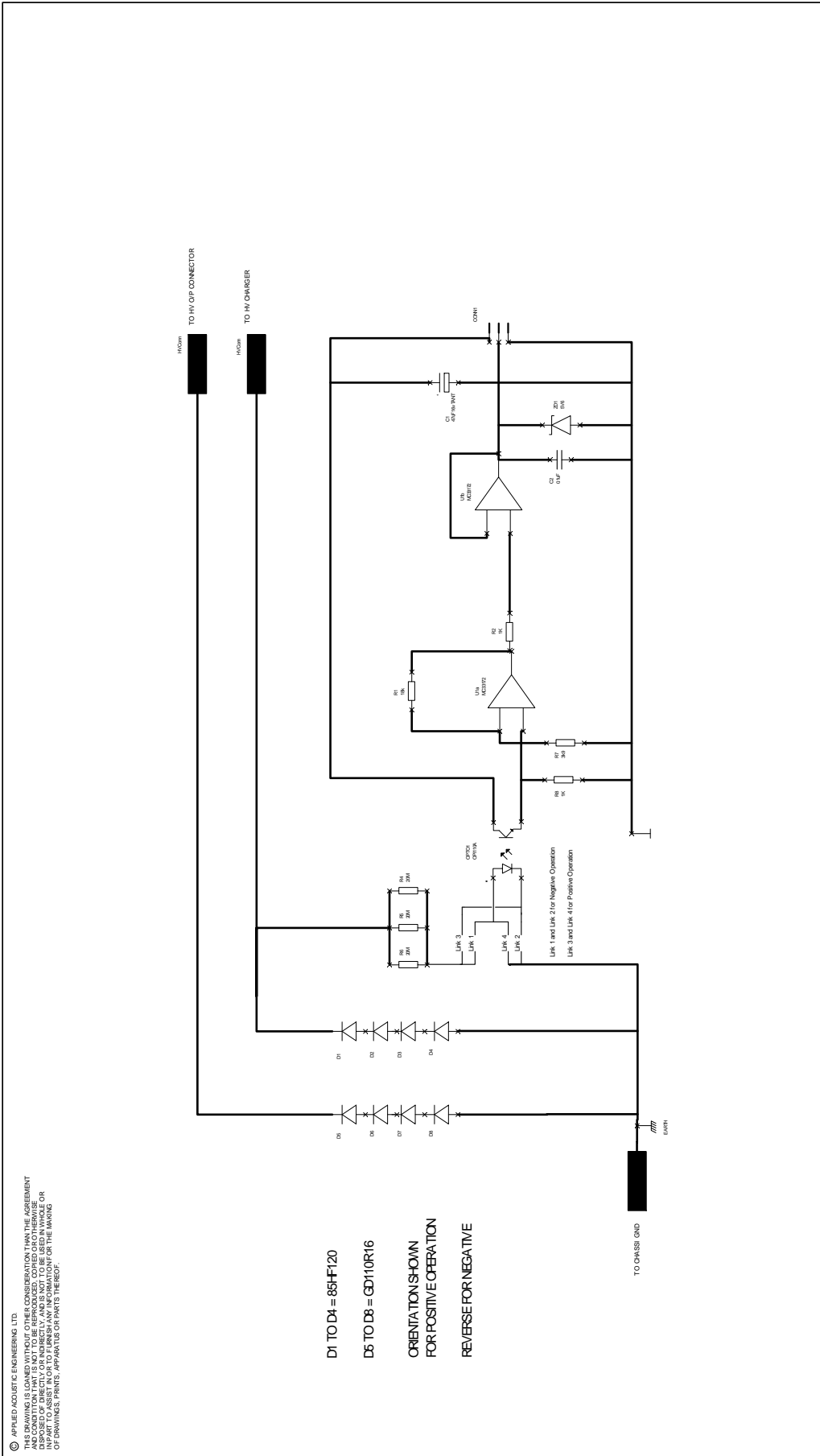








ISSUE	DESCRIPTION	APPROVED	DATE	ALL DIMS IN mm	NOT TO SCALE	APPLIED ACOUSTIC ENGINEERING LTD.	DRAWN	SUM	DATE	TITLE
2	DCR335	AD	10/07				CHECKED	SUM	09/10/07	CSP D FRONT PANEL BOARD
1	PRODUCTION	AD	02/07				APPROVED	AD	10/10/07	CSP-CSPD-5100/2

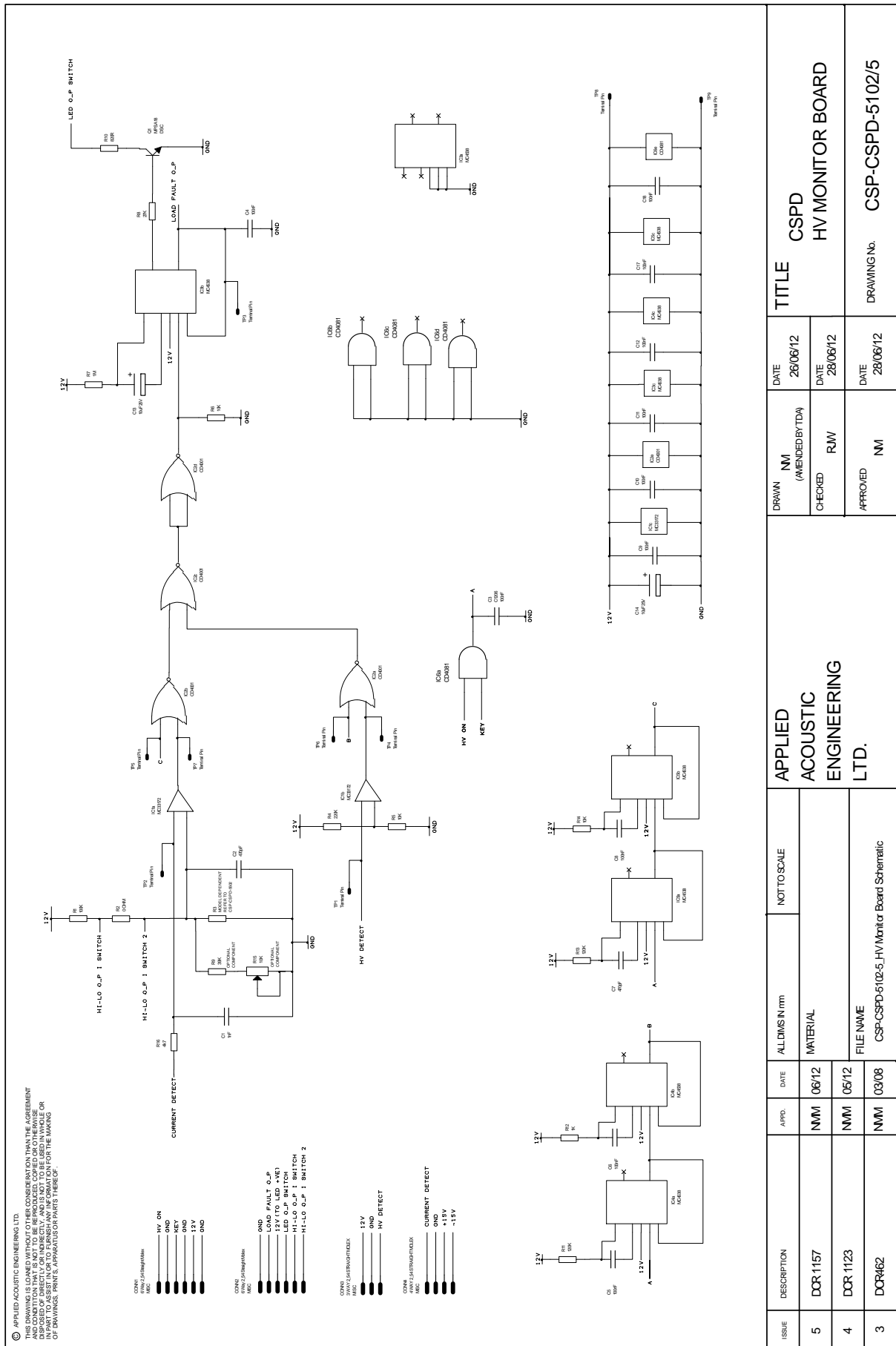


© APPLIED ACOUSTIC ENGINEERING LTD.  
 THIS DRAWING IS LOANED WITHOUT OTHER CONSIDERATION THAN THE AGREEMENT  
 AND CONDITION THAT IS NOT TO BE REPRODUCED, COPIED OR OTHERWISE  
 IN PART TO ASSIST FOR TO FURNISH ANY INFORMATION OR THE MAKING  
 OF DRAWINGS, PRINTS, APPARATUS OR PARTS THEREOF.

D1 TO D4 = 65HF120  
 D5 TO D8 = GD10R16

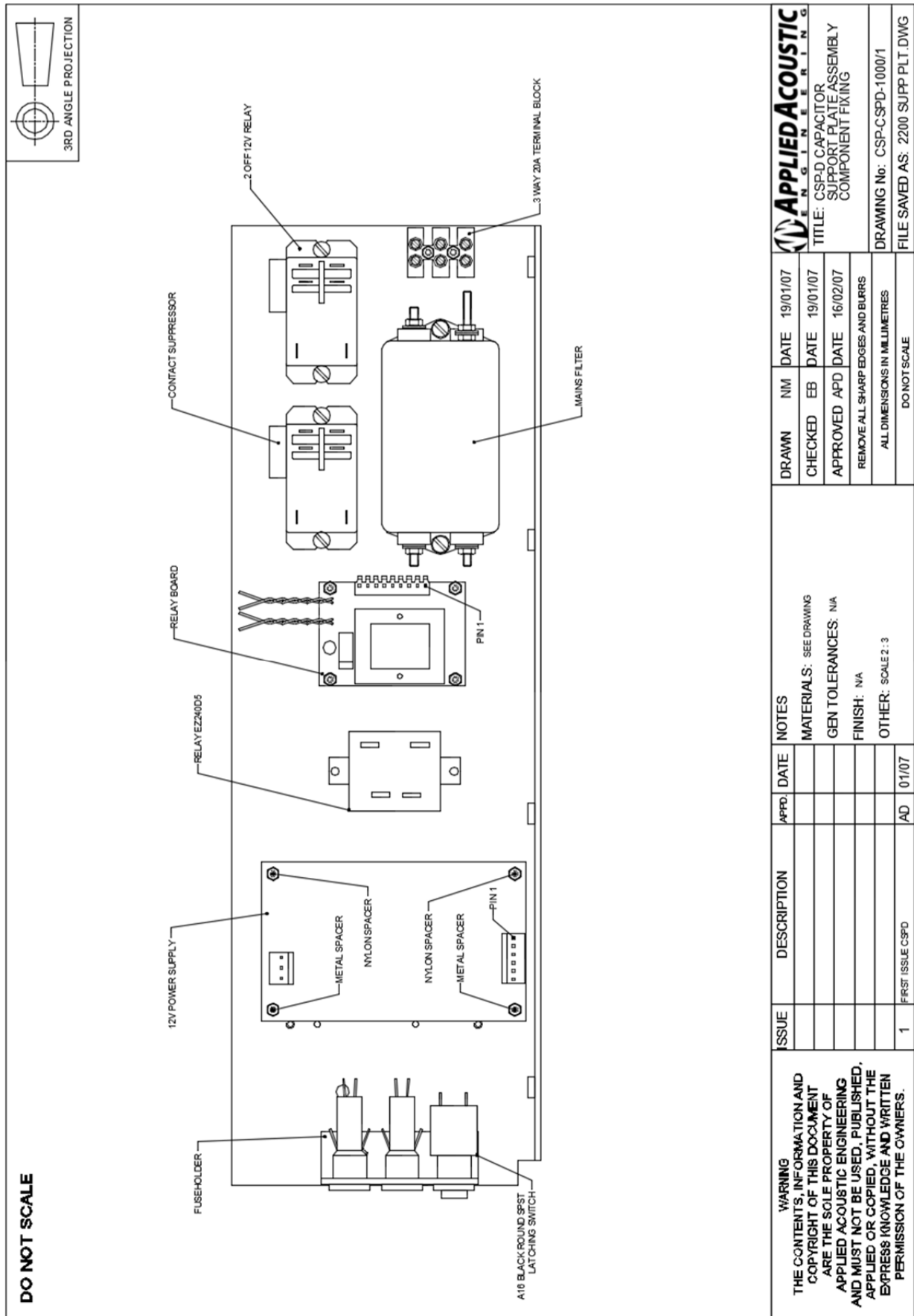
ORIENTATION SHOWN  
 FOR POSITIVE OPERATION  
 REVERSE FOR NEGATIVE

ISSUE	DESCRIPTION	APPR.	DATE	ALL DIMS IN mm	NOT TO SCALE	APPLIED ACOUSTIC ENGINEERING LTD.		DRAWN	DATE	TITLE
1	FIRST ISSUE	NM	11/06	MATERIAL				NM	02/04/13	CSP - D
2	DCR 745	NM	04/10	FILE NAME				CHECKED	18/06/13	HV DIODE / DETECT BOARD
3	DCR 1340 CSPN Variant	JME	06/13	CSP-CSPD-5001-3_HV_Detect Board				APPROVED	11/07/13	DRAWING No. CSP-CSPD-5101/3

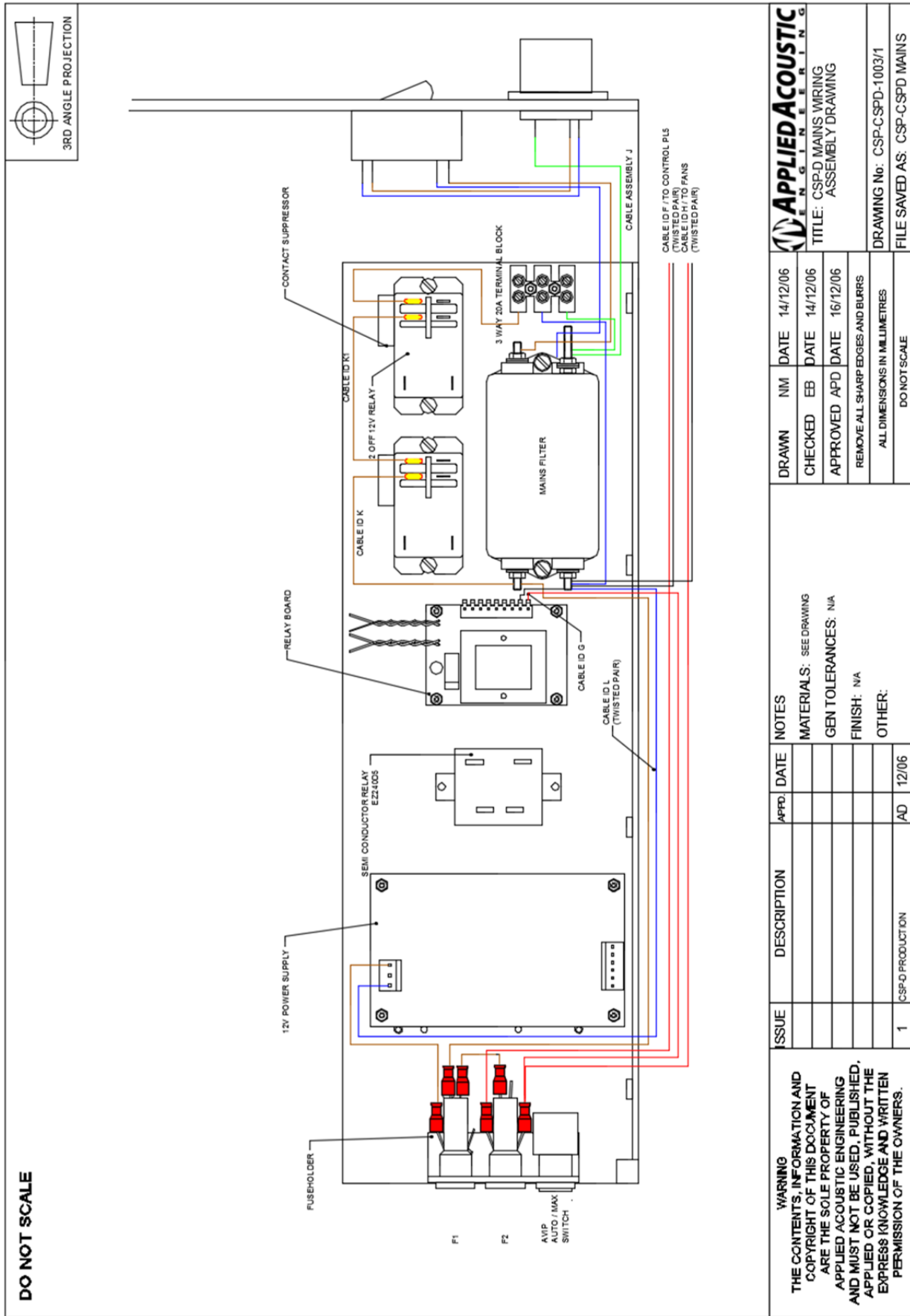


ISSUE	DESCRIPTION	APPROVED	DATE	ALL DIMS IN mm	NOT TO SCALE	APPLIED ACOUSTIC ENGINEERING LTD.	DRAWN	DATE	TITLE
5	DCR 1157	NMM	06/12	MATERIAL			NM	26/06/12	CSPD HV MONITOR BOARD
4	DCR 1123	NMM	05/12	FILE NAME			CHECKED	28/06/12	
3	DCR462	NMM	03/08	CSP-CSPD-5102-5 HV Monitor Board Schematic			APPROVED	28/06/12	DRAWING No. CSP-CSPD-5102/5





ISSUE	DESCRIPTION	DATE	NOTES	DRAWN	DATE
1	FIRST ISSUE CSPD	01/07	MATERIALS: SEE DRAWING GEN TOLERANCES: N/A FINISH: N/A OTHER: SCALE: 3	NM	19/01/07
				CHECKED	19/01/07
				APPROVED	16/02/07
<p>WARNING                  THE CONTENTS, INFORMATION AND COPYRIGHT OF THIS DOCUMENT ARE THE SOLE PROPERTY OF APPLIED ACOUSTIC ENGINEERING AND MUST NOT BE USED, PUBLISHED, APPLIED OR COPIED, WITHOUT THE EXPRESS KNOWLEDGE AND WRITTEN PERMISSION OF THE OWNERS.</p>				<p><b>APPLIED ACOUSTIC</b>                  ENGINEERING                  TITLE: CSP-D CAPACITOR SUPPORT PLATE ASSEMBLY COMPONENT FIXING                  DRAWING No: CSP-CSPD-1000/1                  FILE SAVED AS: 2200 SUPP PLT.DWG</p>	



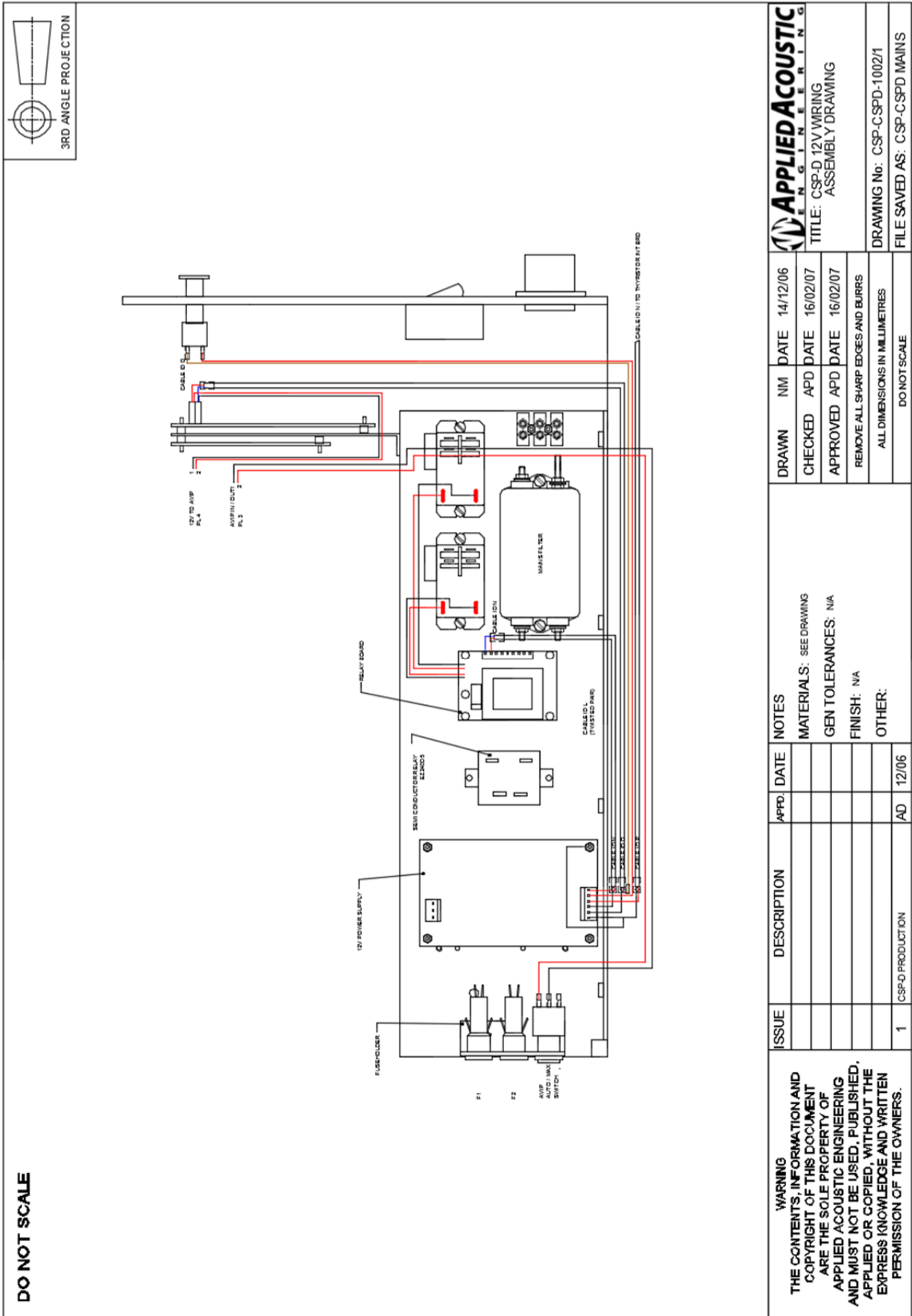
**APPLIED ACOUSTIC**  
 ENGINEERING

TITLE: CSP-D MAINS WIRING ASSEMBLY DRAWING

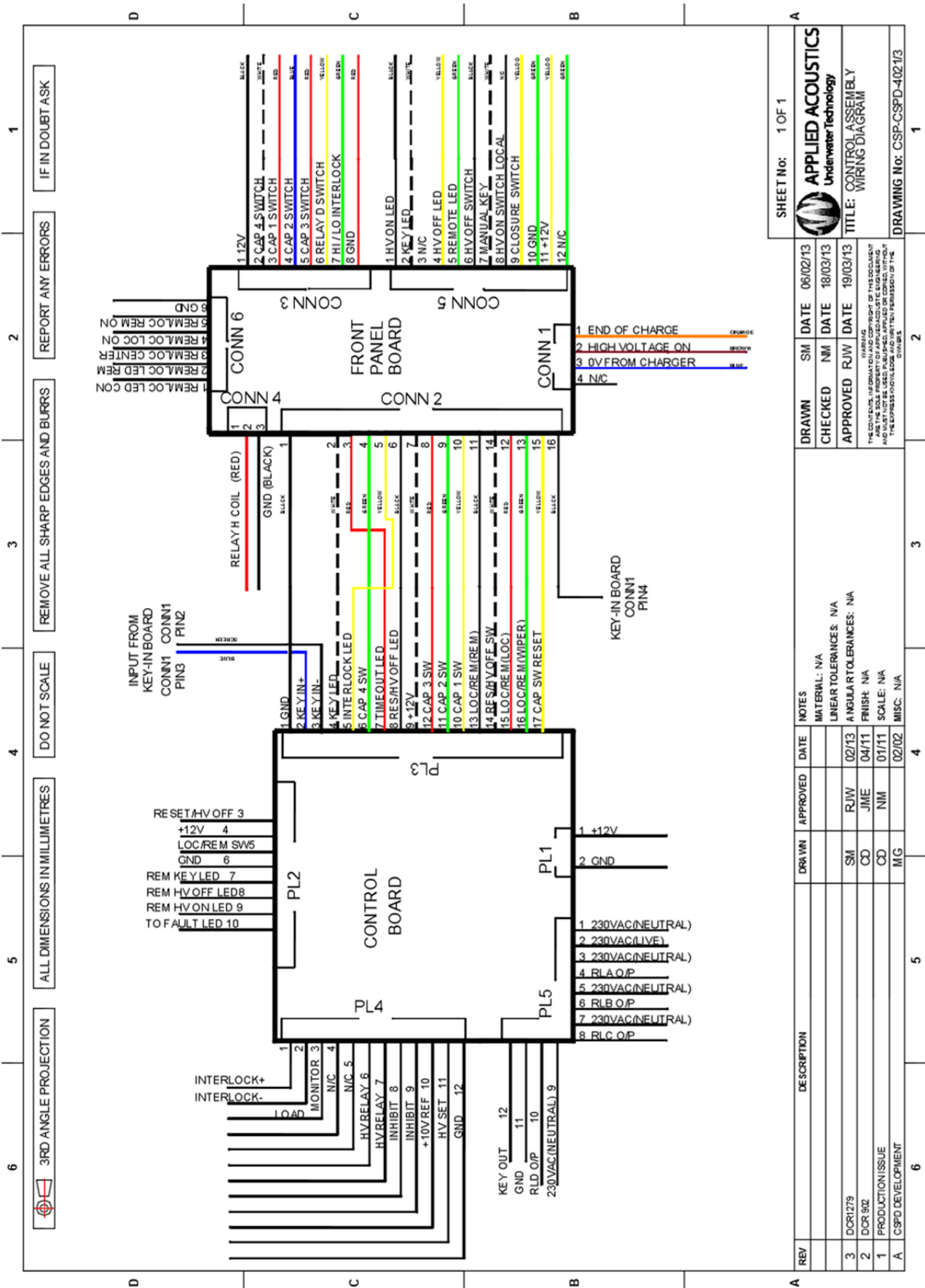
DRAWN	NM	DATE	14/12/06
CHECKED	EB	DATE	14/12/06
APPROVED	APD	DATE	16/12/06
REMOVE ALL SHARP EDGES AND BLURS			
ALL DIMENSIONS IN MILLIMETRES			
DO NOT SCALE			

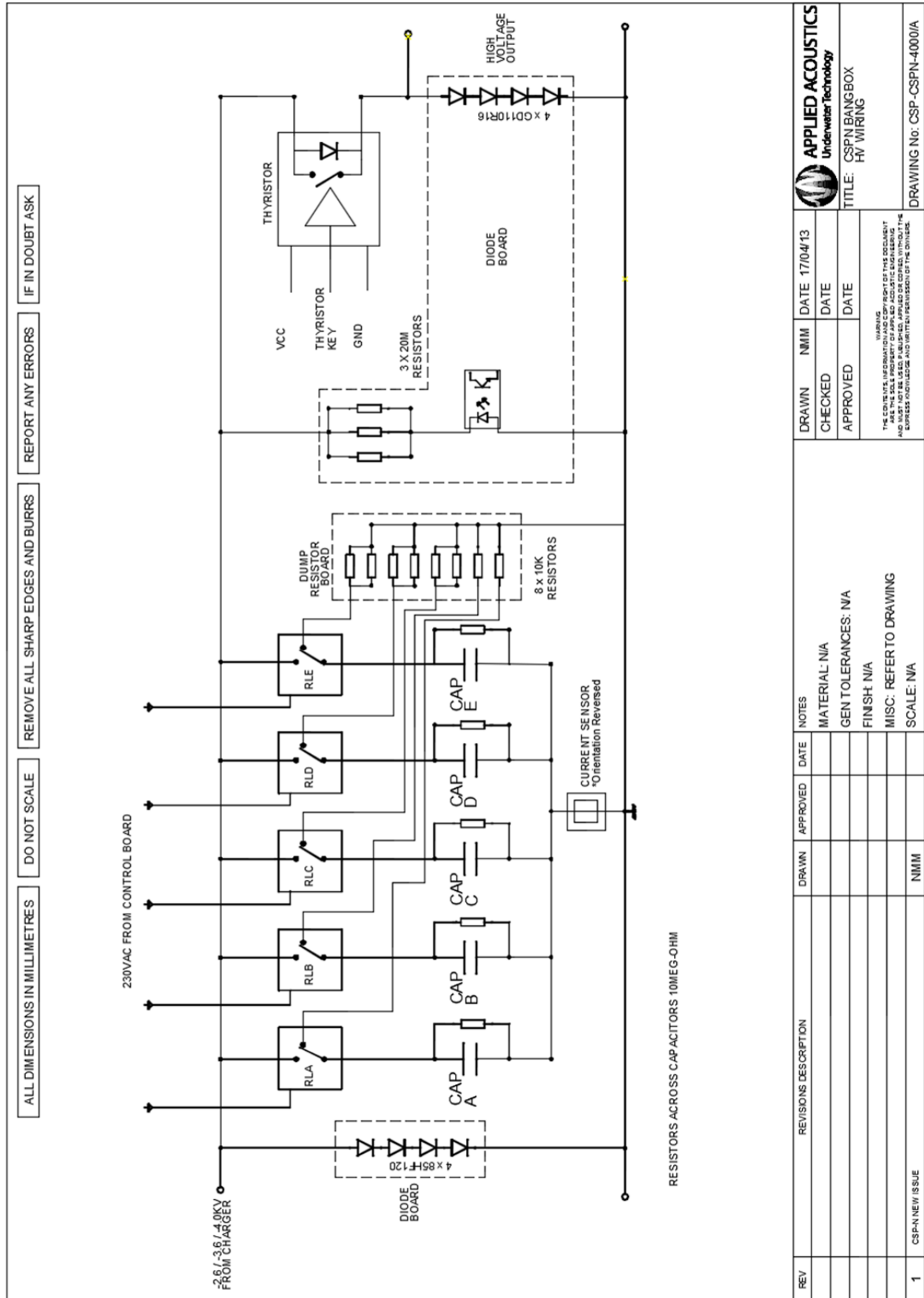
ISSUE	DESCRIPTION	APPR. DATE	NOTES
1	CSP-D PRODUCTION	AD 12/06	MATERIALS: SEE DRAWING GEN TOLERANCES: N/A FINISH: N/A OTHER:

**WARNING**  
 THE CONTENTS, INFORMATION AND COPYRIGHT OF THIS DOCUMENT ARE THE SOLE PROPERTY OF APPLIED ACOUSTIC ENGINEERING AND MUST NOT BE USED, PUBLISHED, APPLIED OR COPIED, WITHOUT THE EXPRESS KNOWLEDGE AND WRITTEN PERMISSION OF THE OWNERS.



<p><b>WARNING</b></p> <p>THE CONTENTS, INFORMATION AND COPYRIGHT OF THIS DOCUMENT ARE THE SOLE PROPERTY OF APPLIED ACOUSTIC ENGINEERING AND MUST NOT BE USED, PUBLISHED, APPLIED OR COPIED, WITHOUT THE EXPRESS KNOWLEDGE AND WRITTEN PERMISSION OF THE OWNERS.</p>	ISSUE	DESCRIPTION	APPR.	DATE	NOTES
	1	CSP-D PRODUCTION	AD	12/06	OTHER:
					OTHER:
					MATERIALS: SEE DRAWING
					GEN TOLERANCES: N/A
					FINISH: N/A
					REMOVE ALL SHARP EDGES AND BURRS
					ALL DIMENSIONS IN MILLIMETRES
					DO NOT SCALE
					DRAWING No: CSP-CSPD-1002/1
					FILE SAVED AS: CSP-CSPD MAINS
					<p><b>APPLIED ACOUSTIC ENGINEERING</b></p> <p>TITLE: CSP-D 12V WIRING ASSEMBLY DRAWING</p>
					<p>DRAWN NM DATE 14/12/06</p> <p>CHECKED APD DATE 16/02/07</p> <p>APPROVED APD DATE 16/02/07</p>





REV	REVISIONS DESCRIPTION	DRAWN	APPROVED	DATE	NOTES
1	CSPN NEW ISSUE	NMM			
					MATERIAL: N/A
					GEN TOLERANCES: N/A
					FINISH: N/A
					MISC: REFER TO DRAWING
					SCALE: N/A

DRAWN	NMM	DATE	17/04/13
CHECKED		DATE	
APPROVED		DATE	

APPLIED ACOUSTICS  
Underwater Technology

TITLE: CSPN BANG BOX  
HV WIRING

WARNING:  
THE CONTENTS, INFORMATION AND COPYRIGHT OF THIS DOCUMENT ARE THE SOLE PROPERTY OF APPLIED ACOUSTIC ENGINEERING AND ARE NOT TO BE REPRODUCED, COPIED, EITHER WHOLLY OR IN PART, OR BY ANY MEANS, WITHOUT THE EXPRESS PERMISSION AND WRITTEN PERMISSION OF THE DIVISION.

DRAWING No.: CSP-CSPN-4000/A

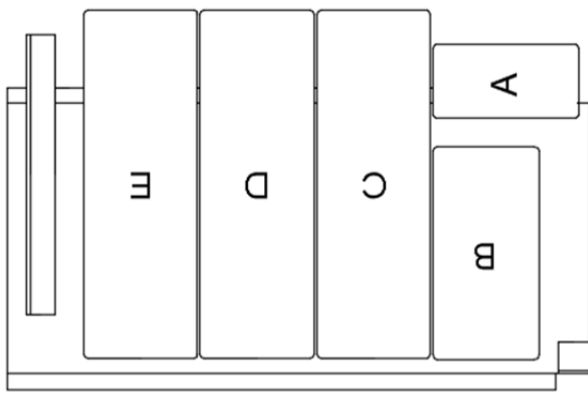
DO NOT SCALE

REPORT ANY ERRORS

IF IN DOUBT ASK

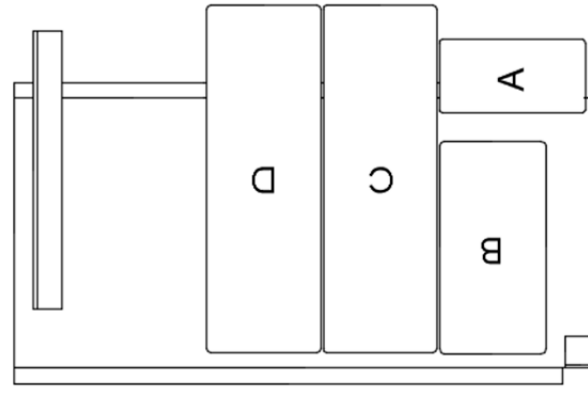
PROJECTION THIRD ANGLE

CSP-D 2400 CAP LAYOUT

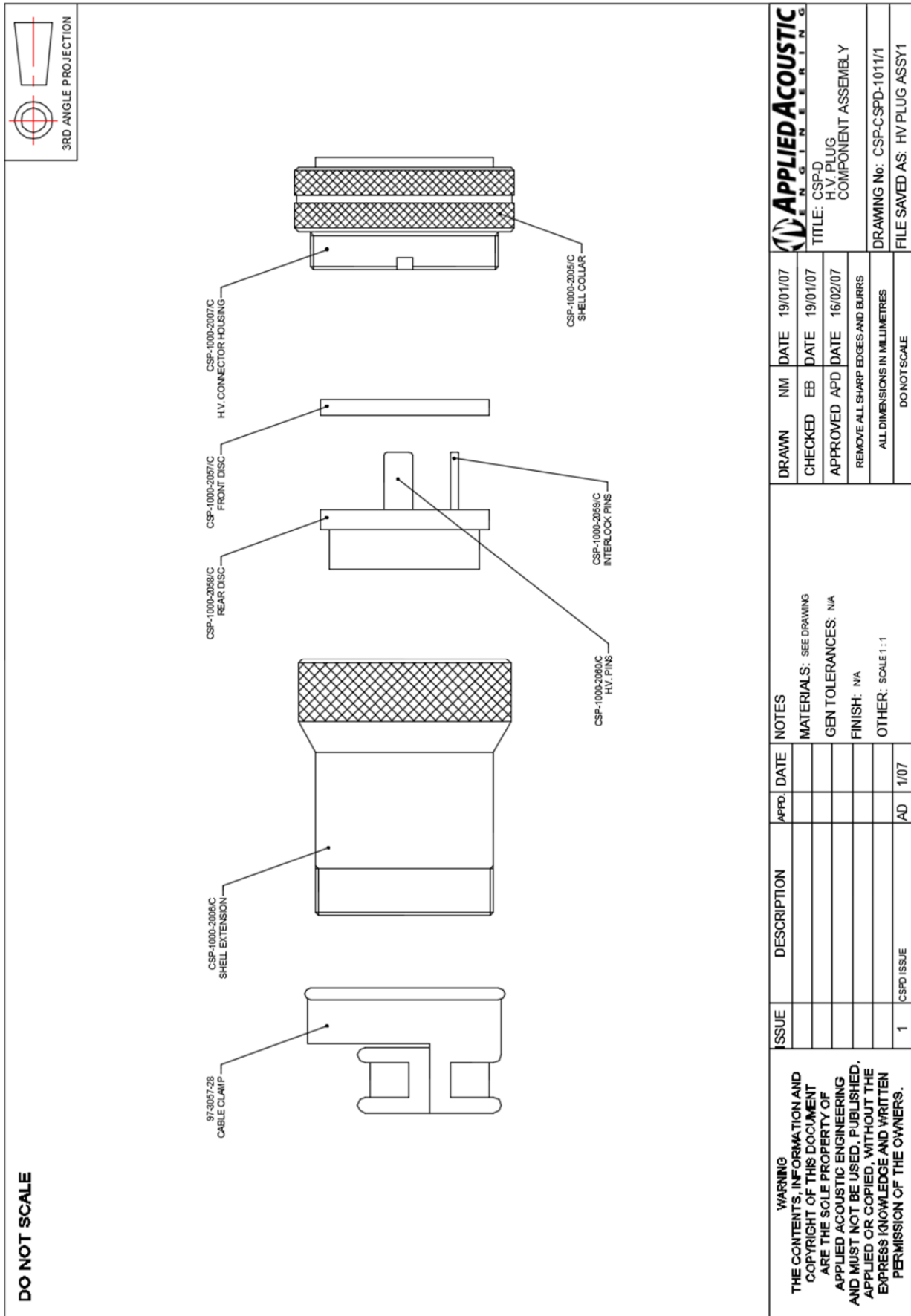


CAP A 16uF  
 CAP B 32uF  
 CAP C 64uF  
 CAP D & E 96uF

CSP-D 1200 CAP LAYOUT



<p><b>WARNING</b>                  THE CONTENTS, INFORMATION AND COPYRIGHT OF THIS DOCUMENT ARE THE SOLE PROPERTY OF APPLIED ACOUSTIC ENGINEERING AND MUST NOT BE USED, PUBLISHED, APPLIED OR COPIED, WITHOUT THE EXPRESS KNOWLEDGE AND WRITTEN PERMISSION OF THE OWNERS.</p>		ISSUE	DESCRIPTION	APPD.	DATE	NOTES
		1	CSP-D NEW ISSUE	APD	12/06	SCALE: NA
				<p>MATERIAL:                  GEN TOLERANCES:                  FINISH:                  MISC: NA</p>		
				<p>REMOVE ALL SHARP EDGES AND BURRS                  ALL DIMENSIONS IN MILLIMETRES</p>		
				<p>DRAWING No: CSP-CSPD-1001/1                  FILE SAVED AS: CSPD CAP LAYOUT</p>		
APPROVED	APD	DATE	16/02/07			
CHECKED	EB	DATE	11/12/06			
DRAWN	NM	DATE	11/12/06			
				<p><b>APPLIED ACOUSTIC ENGINEERING</b>                  TITLE: CSPD CAPACITOR LAYOUT</p>		



**DO NOT SCALE**

ISSUE		DESCRIPTION	APPR.	DATE	NOTES	DRAWN	NM	DATE
1		CSPD ISSUE	AD	1/07	MATERIALS: SEE DRAWING GEN TOLERANCES: N/A FINISH: N/A OTHER: SCALE 1:1	<b>APPLIED ACOUSTIC</b> ENGINEERING		19/01/07
						CHECKED	EB	19/01/07
						APPROVED	APD	16/02/07
						REMOVE ALL SHARP EDGES AND BURRS		
						ALL DIMENSIONS IN MILLIMETRES		
						DO NOT SCALE		
						DRAWING No: CSP-CSPD-1011/1		
						FILE SAVED AS: HV PLUG ASSY1		
						TITLE: CSP-D H.V. PLUG COMPONENT ASSEMBLY		

**WARNING**  
 THE CONTENTS, INFORMATION AND  
 COPYRIGHT OF THIS DOCUMENT  
 ARE THE SOLE PROPERTY OF  
 APPLIED ACOUSTIC ENGINEERING  
 AND MUST NOT BE USED, PUBLISHED,  
 APPLIED OR COPIED, WITHOUT THE  
 EXPRESS KNOWLEDGE AND WRITTEN  
 PERMISSION OF THE OWNERS.

**DO NOT SCALE**

H.V. PINS  
CSP-1000-2060/C

12.0

1500mm

CABLE TYPE BS6195 TYPE 4 D' 50mm 3.3kV BLACK

HEATSHRINK  
RED/FEC 107-480  
BLACK/FEC 143-724

1. CLEAN AND DEGREASE THE HV PINS CSP-1000-2060/C. STRIP 12mm OF INSULATION FROM THE ENDS OF 2, 1500mm LENGTHS OF H.V. CABLE. SOLDER THE HV PINS ONTO THE CABLE (THE SOLDERING IRON SHOULD BE 100W OR MORE). CHECK FOR GOOD CONNECTION BEFORE CLEANING AND DEGREASING. APPLY HEATSHRINK AS SHOWN, RED ON ONE PIN, BLACK ON THE OTHER, USE A 50mm LENGTH OF HEATSHRINK AND COVER UP TO THE RETAINING RING GROOVE.

MALE CONNECTOR  
REAR DISC  
CSP-1000-2058/C

H.V. CABLE

HEATSHRINK

INTERLOCK PIN  
CSP-1000-2053/C

RETAINING RING  
CSP-1000-2053/C

2. TAKE 2100mm OF TWIN SCREENED CABLE (FEC 140-643) STRIP 50mm OF THE OVERALL GREY INSULATION FROM ONE END AND REMOVE THE SCREEN. STRIP 5mm OF INSULATION FROM THE RED AND THE BLUE INNER CORES. FEED THE 2 WIRES THROUGH THE SMALL HOLES IN THE PTFE REAR DISC CSP-1000-2058/C AND SOLDER THE INTERLOCK PINS TO THE WIRES. CLEAN AND DEGREASE THE PINS AND PUSH THEM INTO THE RECESS IN THE REAR DISC. THE PINS ARE NOT POLARITY SENSITIVE.

PIN POLARITY  
REAR VIEW

3RD ANGLE PROJECTION

3. FIT THE RETAINING RINGS (CSP-1000-2053/C) ON THE H.V. PINS, PUSH THE H.V. PINS BACK INTO THE RECESSES IN THE REAR DISC ENSURING CORRECT POLARITY.

FRONT DISC  
CSP-1000-2057/C

4. PUSH THE PTFE FRONT DISC (CSP-1000-2057/C) OVER THE ASSEMBLY AS SHOWN. REFER TO DRAWING CSP-1000-3005/C AND ASSEMBLE THE CONNECTOR AS FOLLOWS:

- PUSH THE 2 PTFE DISCS INTO THE HOUSING
- FEED THE LOCKING COLLAR OVER THE HOUSING SO THAT IT ROTATES FREELY
- SECURE THE PTFE INSERTS INTO THE HOUSING USING CIRCLIP (NIFCSB-055)
- SCREW THE EXTENSION SHELL ONTO THE HOUSING
- SCREW THE CABLE CLAMP ONTO THE EXTENSION SHELL AND SECURE THE CABLE WITH THE CABLE CLAMP.

5. USING AN 8KV MEGGER PERFORM THE FOLLOWING INSULATION TESTS:

- POSITIVE AND NEGATIVE HIGH VOLTAGE PINS
- POSITIVE HIGH VOLTAGE PIN TO CASE
- NEGATIVE HIGH VOLTAGE PIN TO CASE
- POSITIVE HIGH VOLTAGE PIN TO BOTH INTERLOCK PINS
- NEGATIVE HIGH VOLTAGE PIN TO BOTH INTERLOCK PINS

NOTE: BECAUSE OF THE HIGH VOLTAGE INVOLVED, ONLY EXPERIENCED PERSONNEL MUST CARRY OUT THE ABOVE TEST. EXERCISE EXTREME CAUTION, KEEPING CLEAR FROM THE ASSEMBLY WHEN TESTING.

6. SEE DRAWING CSP-1000-3004/C FOR DETAILS OF JUNCTION BOX END OF THE CABLE.

ISSUE	DESCRIPTION	APPD.	DATE	NOTES
1	CSPD ISSUE	AD	01/07	

**WARNING**  
 THE CONTENTS, INFORMATION AND COPYRIGHT OF THIS DOCUMENT ARE THE SOLE PROPERTY OF APPLIED ACOUSTIC ENGINEERING AND MUST NOT BE USED, PUBLISHED, APPLIED OR COPIED, WITHOUT THE EXPRESS KNOWLEDGE AND WRITTEN PERMISSION OF THE OWNERS.

DRAWN	NM	DATE	19/01/07
CHECKED	EB	DATE	19/01/07
APPROVED	APD	DATE	16/02/07

REMOVE ALL SHARP EDGES AND BURRS

ALL DIMENSIONS IN MILLIMETRES

DO NOT SCALE

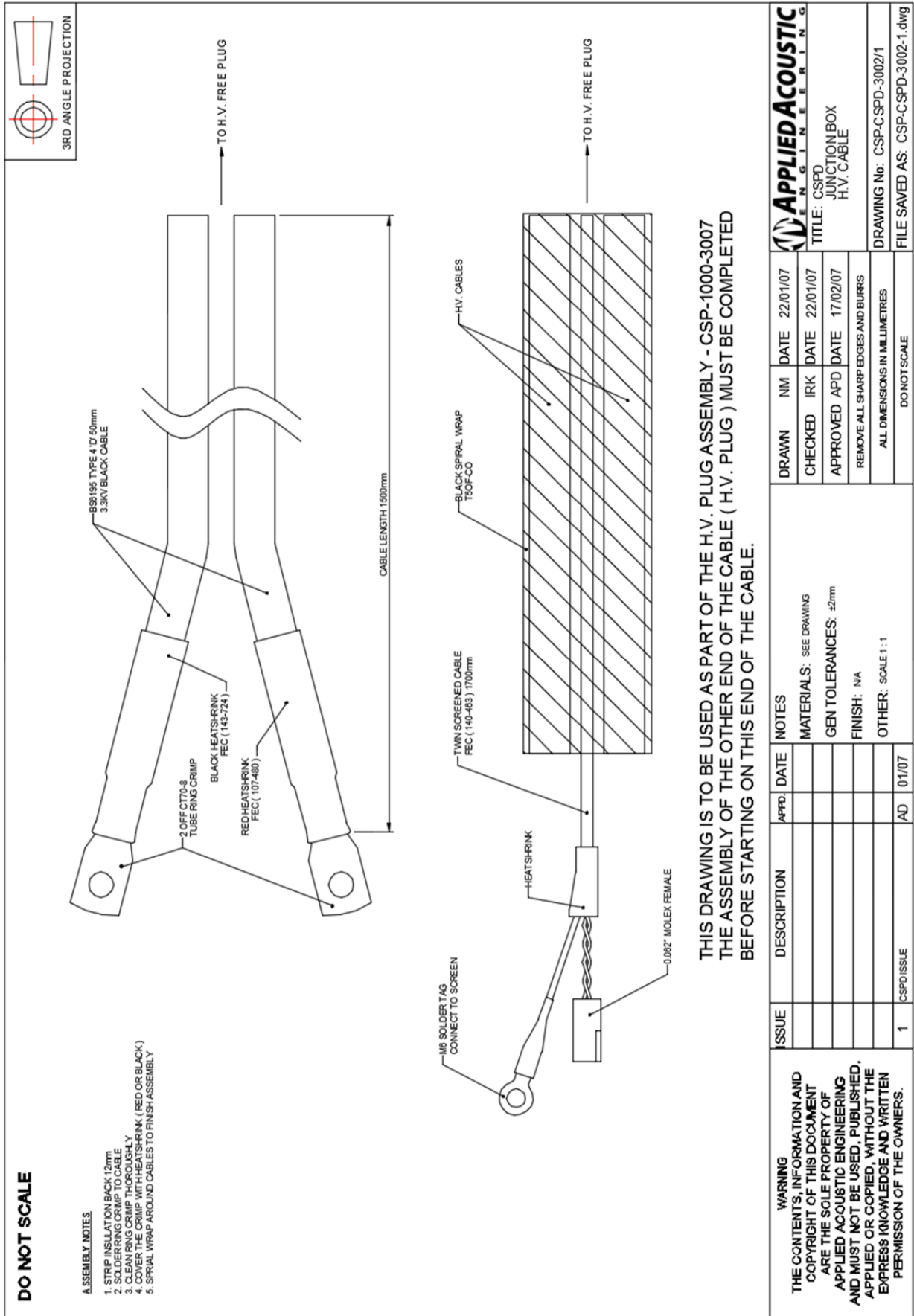
**APPLIED ACOUSTIC ENGINEERING**

TITLE: CSPD HIGH VOLTAGE PLUG ASSEMBLY

DRAWING No: CSP-CSPD-1012/1

FILE SAVED AS: HV PLUG ASSY2.DWG





**DO NOT SCALE**

**ASSEMBLY NOTES**

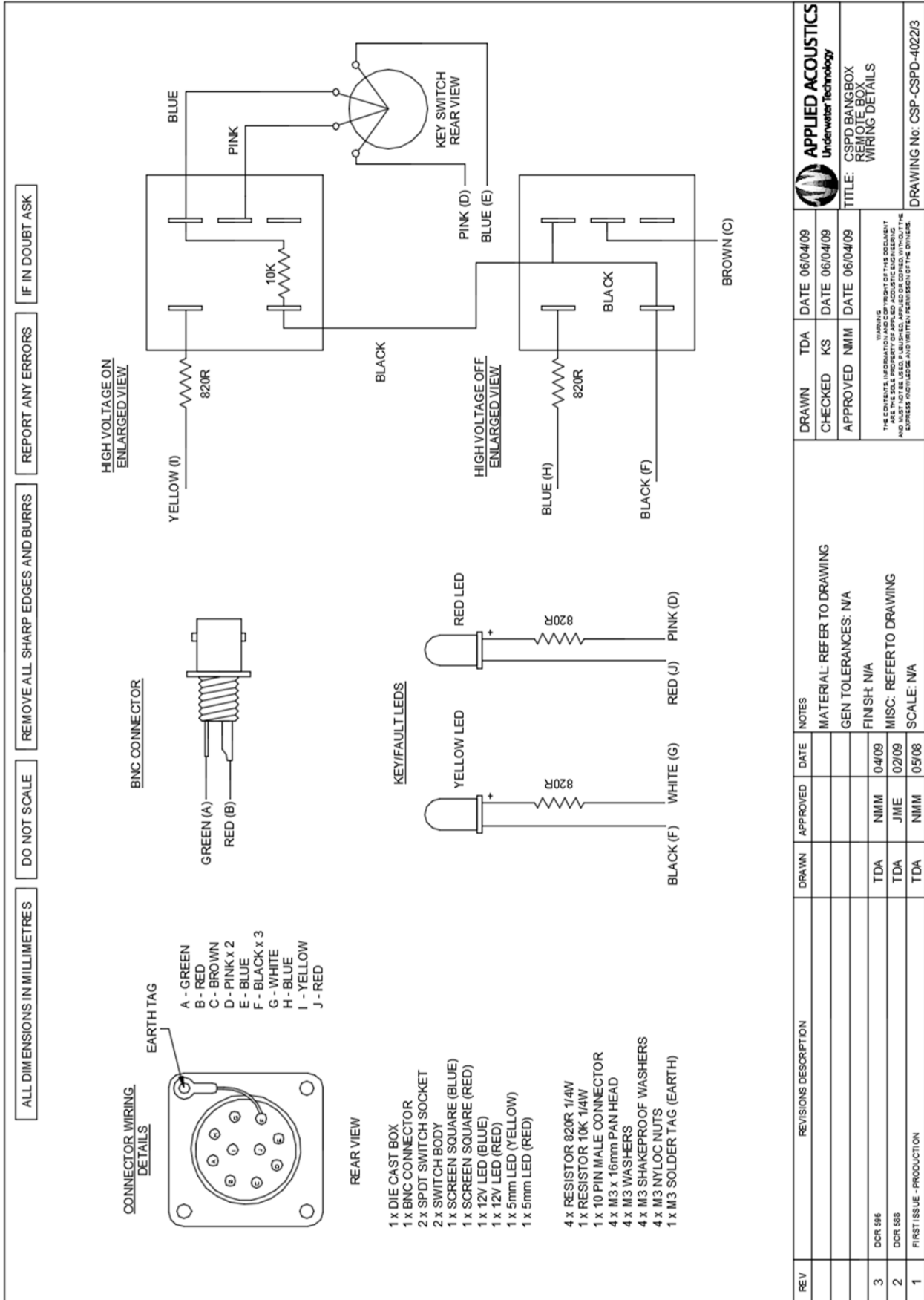
1. STRIP INSULATION BACK 12mm
2. SOLDERING CRIMP TO CABLE
3. COVER THE CRIMP WITH HEATSHRINK
4. COVER THE CRIMP WITH HEATSHRINK (RED OR BLACK)
5. SPIRAL WRAP AROUND CABLES TO FINISH ASSEMBLY

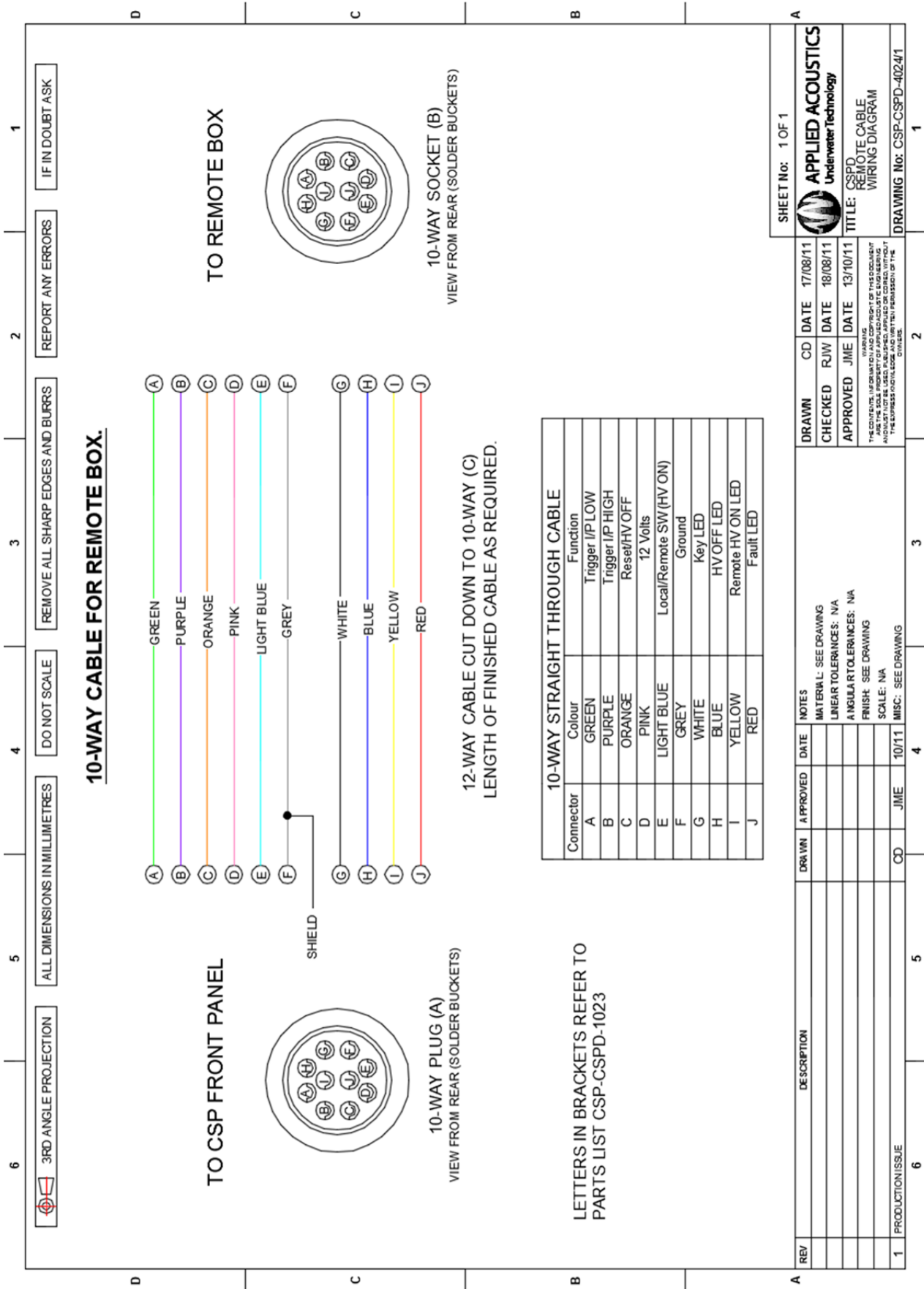
**THIS DRAWING IS TO BE USED AS PART OF THE H.V. PLUG ASSEMBLY - CSP-1000-3007 THE ASSEMBLY OF THE OTHER END OF THE CABLE ( H.V. PLUG ) MUST BE COMPLETED BEFORE STARTING ON THIS END OF THE CABLE.**

ISSUE	DESCRIPTION	APPR. DATE	NOTES
1	CSPDISSUE	AD 01/07	MATERIALS: SEE DRAWING GEN TOLERANCES: ±2mm FINISH: N/A OTHER: SCALE 1:1

<b>APPLIED ACOUSTIC</b> ENGINEERING	DRAWN NM DATE 22/01/07
TITLE: CSPD JUNCTION BOX H.V. CABLE	CHECKED IRK DATE 22/01/07
	APPROVED APD DATE 17/02/07
	REMOVE ALL SHARP EDGES AND BURRS
	ALL DIMENSIONS IN MILLIMETRES
	DO NOT SCALE
	DRAWING No: CSP-CSPD-3002/1
	FILE SAVED AS: CSP-CSPD-3002-1.dwg





3RD ANGLE PROJECTION  
 ALL DIMENSIONS IN MILLIMETRES  
 DO NOT SCALE  
 REMOVE ALL SHARP EDGES AND BURRS  
 REPORT ANY ERRORS  
 IF IN DOUBT ASK

REV	DESCRIPTION	DRAWN	APPROVED	DATE	NOTES
1	PRODUCTION ISSUE	CD	JME	10/11	MISC: SEE DRAWING

DRAWN	CD	DATE	17/08/11
CHECKED	RJM	DATE	18/08/11
APPROVED	JME	DATE	13/10/11

THE COVERING WEIGHT OF THIS DOCUMENT IS THE SOLE PROPERTY OF APPLIED ACOUSTICS AND IS NOT TO BE REPRODUCED OR TRANSMITTED IN ANY FORM OR BY ANY MEANS, ELECTRONIC OR MECHANICAL, INCLUDING PHOTOCOPYING, RECORDING, OR BY ANY INFORMATION STORAGE AND RETRIEVAL SYSTEM, WITHOUT THE EXPRESS WRITTEN PERMISSION OF THE COMPANY.

**APPLIED ACOUSTICS**  
 Underwater Technology

TITLE: CSPD REMOTE CABLE WIRING DIAGRAM

DRAWING No: CSP-CSPD-402-4/1

## Section 4 – System Interconnection

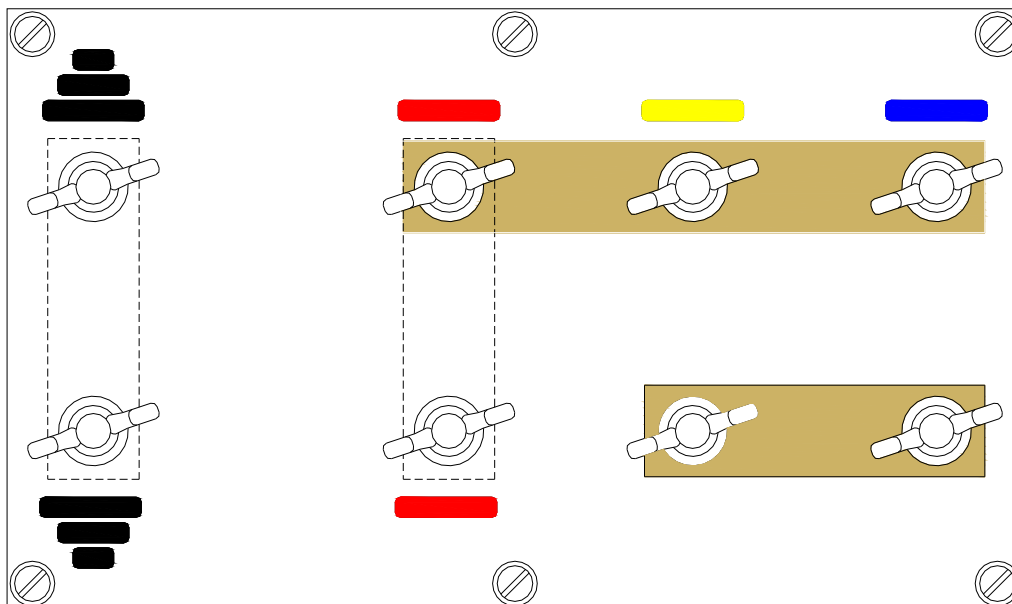
### HVJ3001 HV Junction Box

The CSP-N is supplied with the HV Junction Box HVJ3001, for use with the following sound sources and HV Cables.

Seismic Power Supply	HV Cable	Sound Source
CSP-N	HVC 3000	S-Boom
CSP-N	HVC-3500	Dura Spark
CSP-N	HVC-2000	AA251, AA301 Boomer

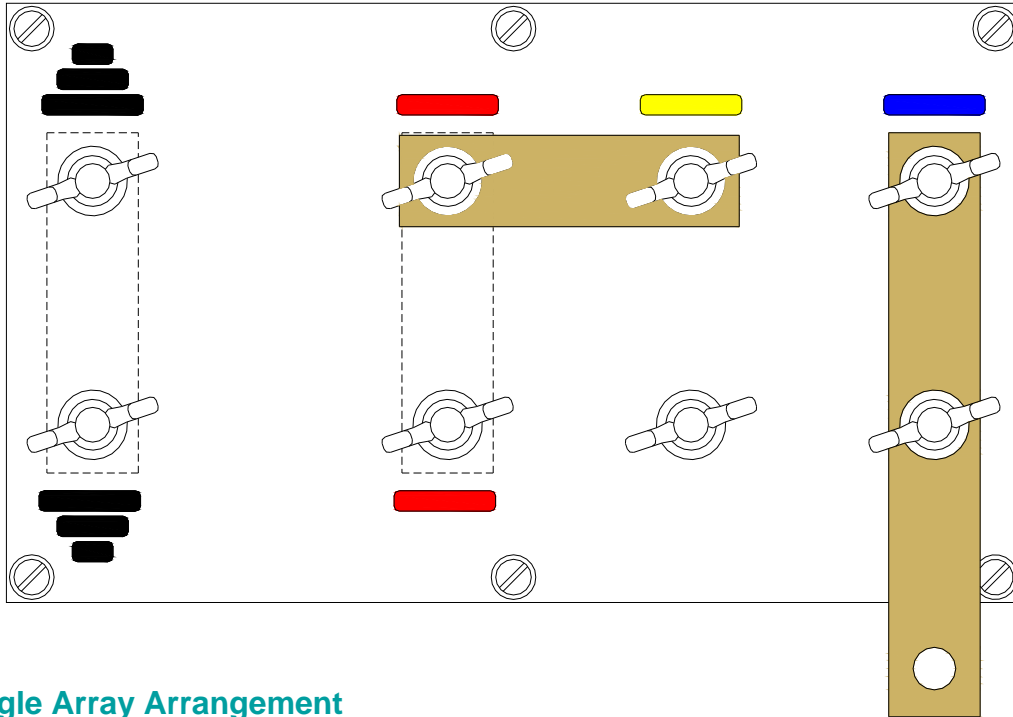
#### 4.1. Triple Array Arrangement

400 Tips DuraSpark 400 // 240 Tips DuraSpark 240 // 3 Boomer Plate S-Boom



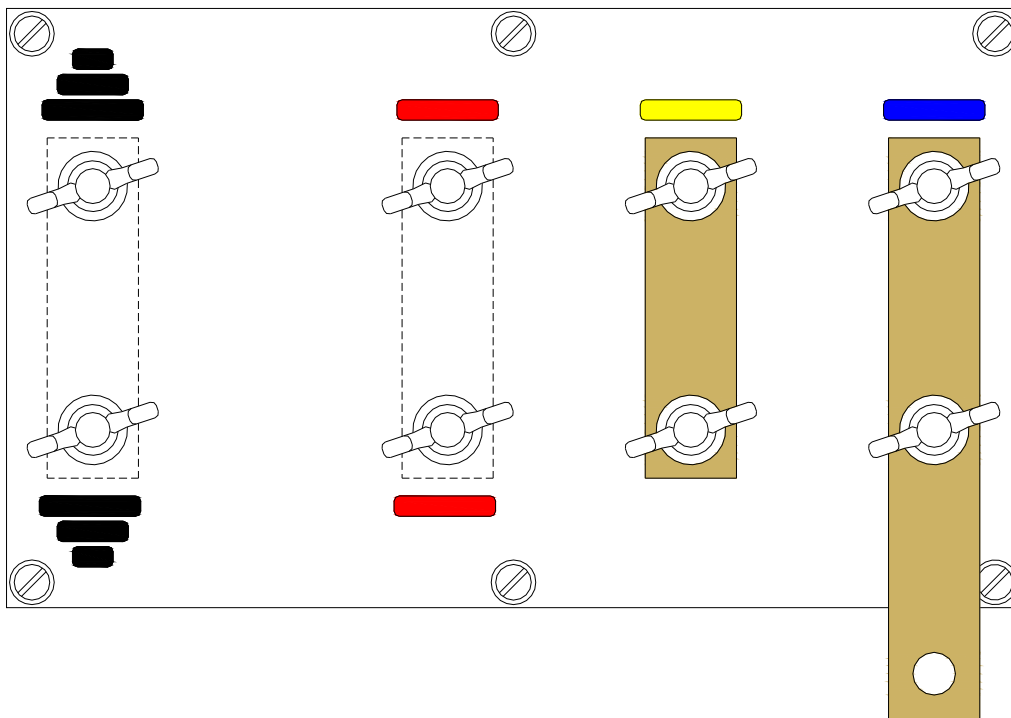
## 4.2. Double Array Arrangement

240 Tips DuraSpark 400 // 160 Tips DuraSpark 240 // 2 Boomer Plate S-Boom

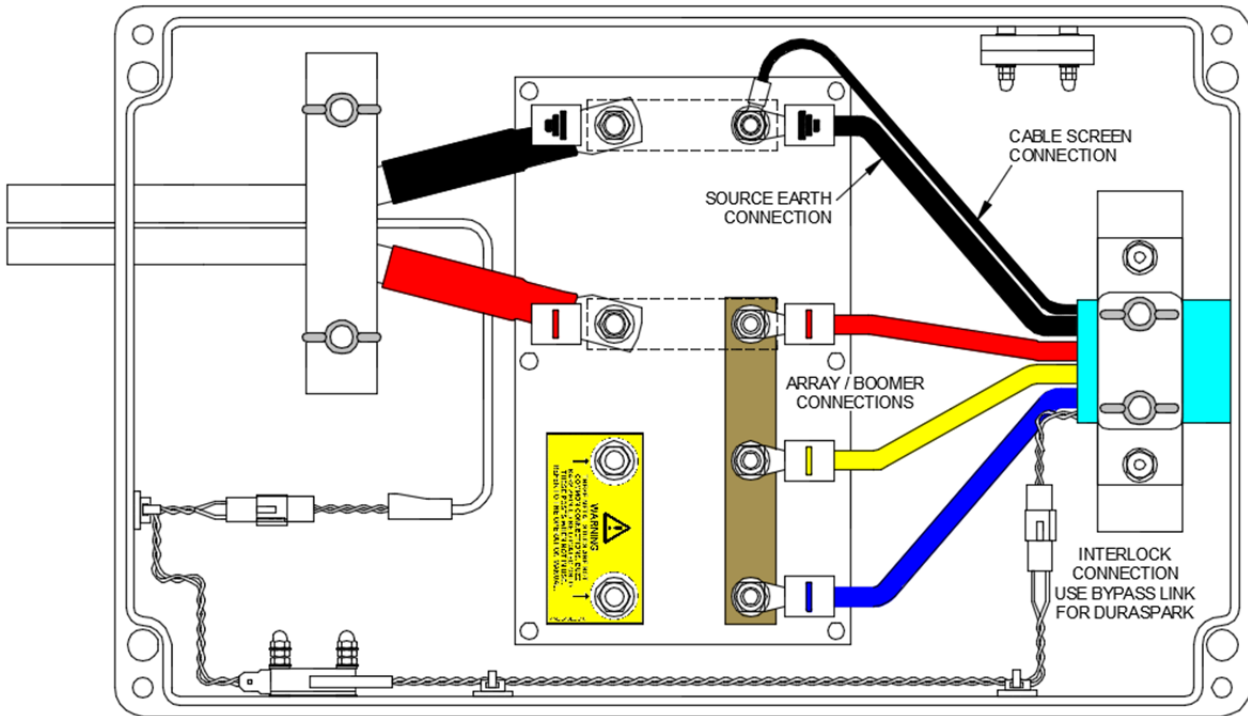


## 4.3. Single Array Arrangement

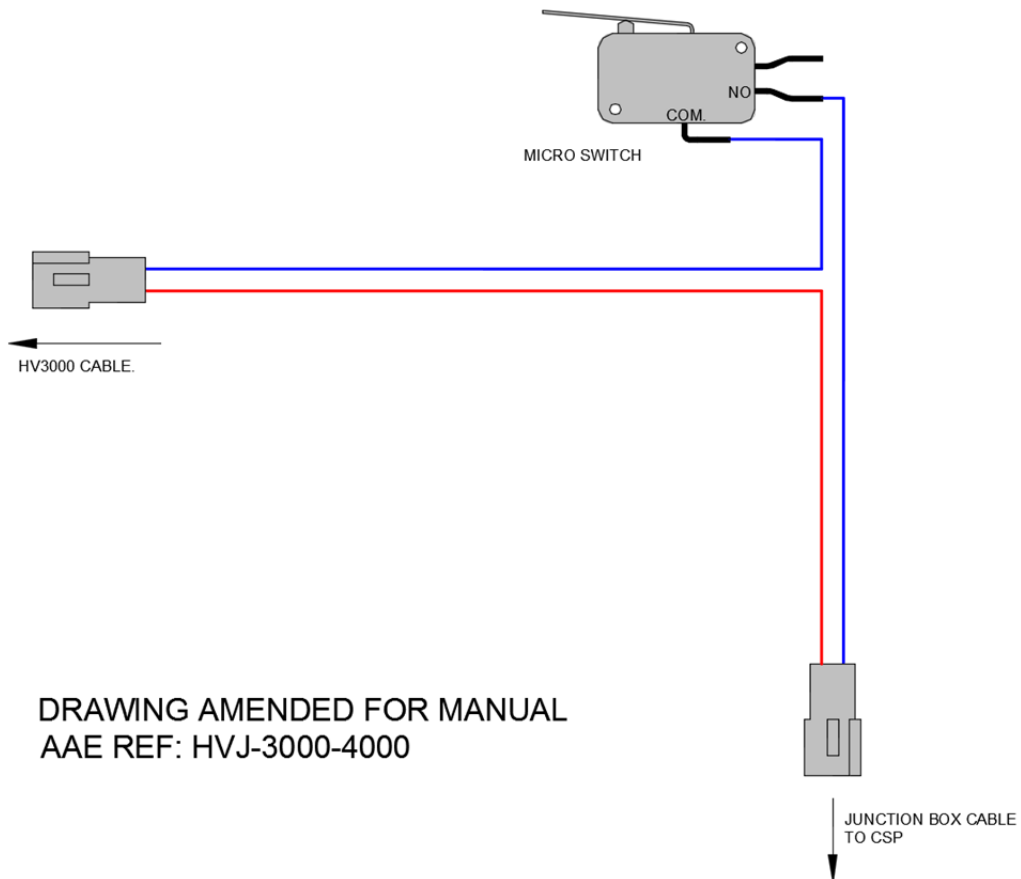
80 Tips DuraSpark 400 and 240 // Single Boomer Plate S-Boom



### 4.4. HVJ3001 Interconnections



### 4.5. HVJ3001 Junction Box Interlock Wiring



Applied Acoustic Engineering is a leading company in the design and manufacture of a wide range of subsea navigation and positioning products, and marine seismic survey equipment.

The extensive product range includes the innovative USBL tracking system, Easytrak, a variety of positioning and release beacons and seismic devices for offshore geotechnical and seabed analysis known as sub-bottom profiling.

All products use acoustics, underwater sound waves, in location, positioning, navigation and data acquisition applications. system, Easytrak, a variety of positioning and release beacons and seismic devices for offshore geotechnical and seabed analysis known as sub-bottom profiling.



Registration No. U6447  
BS: EN: ISO9001