

DEEPSEA
Power & Light[®]



SS Series

Miniature Camera with a Built in LED for Inspection Applications.



FEATURES

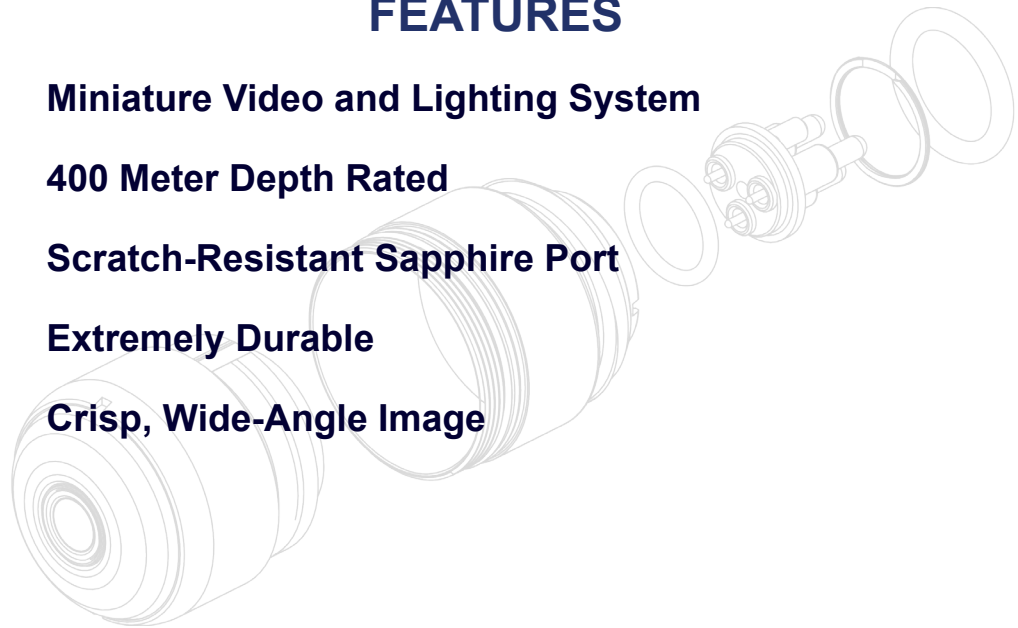
Miniature Video and Lighting System

400 Meter Depth Rated

Scratch-Resistant Sapphire Port

Extremely Durable

Crisp, Wide-Angle Image



T: (858) 576-1261
F: (858) 576-0219

4033 Ruffin Road
San Diego, CA
92123- 1817 USA

www.deepsea.com
sales@deepsea.com



SS Series

	SS-30C Color	SS-35C Color
Mechanical Specifications		
Housing	17-4 Stainless Steel*	17-4 Stainless Steel*
Port	Sapphire	Sapphire
Outer Diameter	30.0 mm (1.18 in)	34.7 mm (1.37 in.)
Overall Length	47.5 mm (1.87 in)	47.8 mm (1.88 in.)
Weight in Air	96.39 g (3.4 oz.)	119.07 g (4.35 oz.)
Environmental Specifications		
Depth Rating	400 m (1312 ft)	400 m (1312 ft)
Operating Temp.	-10° C to 80° C (14° F to 180° F)	-10° C to 80° C (14° F to 180° F)
Storage Temp.	-10° C to 80° C (14° F to 180° F)	-10° C to 80° C (14° F to 180° F)
Optical Specifications		
Lens	2 mm, f3.5	2 mm, f3.5
Focus	Fixed focus, Factory Set	Fixed focus, Factory Set
Depth of Field	1/2-inch	1/2-inch
FOV in Air	83° (H) x 60° (V) x 95° (D)	83° (H) x 60° (V) x 95° (D)
FOV in Water	59° (H) x 44° (V) x 68° (D)	59° (H) x 44° (V) x 68° (D)
Video Specifications		
Image Sensor	1/3-inch interline transfer CCD	1/3-inch interline transfer CCD
Number of Pixels	NTSC: 380k PAL: 437k	NTSC: 380k PAL: 437k
Resolution	NTSC: 768 (H) x 494 (V) PAL: 752 (H) x 582 (V)	NTSC: 768 (H) x 494 (V) PAL: 752 (H) x 582 (V)
Scene Illumination	0.5 Lux	0.5 Lux
Signal to Noise	Electronic, automatic	Electronic, automatic
Video Output	1.0 volt peak-to-peak into 75 ohm	1.0 volt peak-to-peak into 75 ohm
Video Format	NTSC or PAL	NTSC or PAL
Lighting	6 Cree XP White LED's	6 Cree XP White LED's
Electrical Specifications		
Power	8-13 Volts DC	8-13 Volts DC
Current	160 mA (camera), ~500mA with LED's	160 mA (camera), ~500mA with LED's

Standard Connector

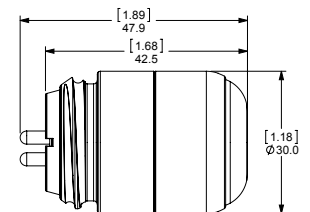


BHSS3MP

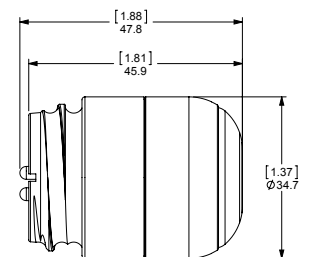
- 1 = Ground
- 2 = Power
- 3 = Video

Dimensions

SS-30



SS-35



[inch]
mm

* 17-4 Stainless steel is NOT recommended for long term immersion in sea water.



4033 Ruffin Road
San Diego, CA
92123-1817 USA

www.deepsea.com
sales@deepsea.com



T: (858) 576-1261
F: (858) 576-0219