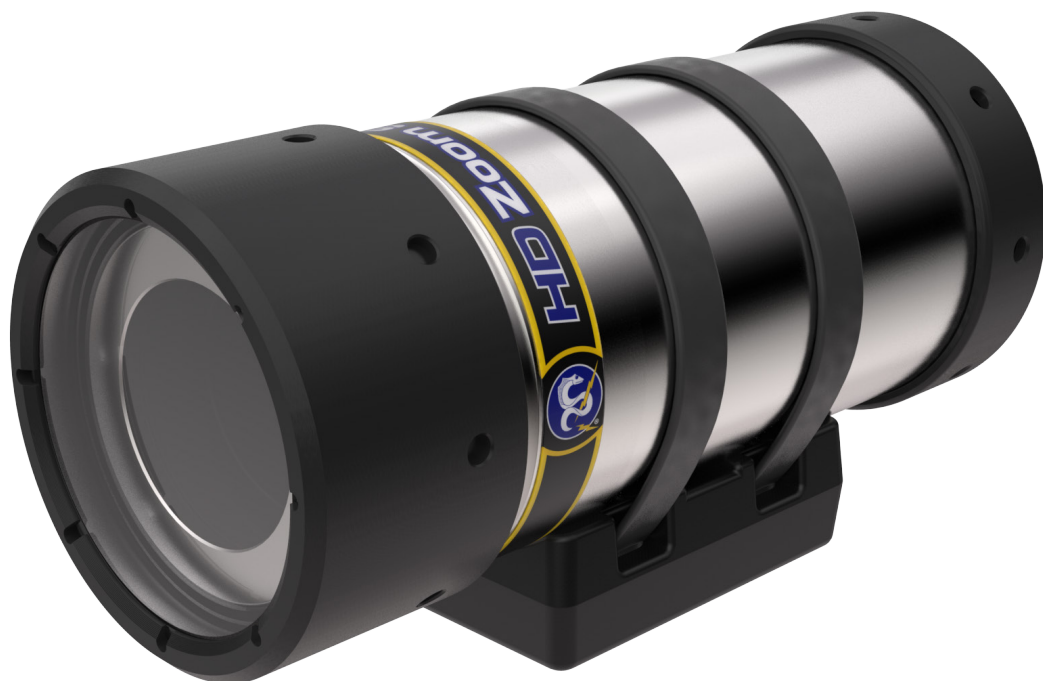


DEEPSEA
Power & Light®



HD Zoom SeaCam®



FEATURES

HD 30x Optical Zoom

Aluminum or Titanium Housing

Up to 6,000 m Depth Rating

Available with Flexlink®

T: (858) 576-1261
F: (858) 576-0219

4033 Ruffin Road
San Diego, CA
92123- 1817 USA

www.deepsea.com
sales@deepsea.com



HD Zoom SeaCam[®]

HDZSC-3045	
Optical Specifications	
Lens	4.3 mm ~ 129 mm, F/1.6 to F/4.7
Focus	Wide: 10 mm ~ infinity Telephoto: 1200 mm ~ infinity
FOV in Water	Wide: 47° H x 27° V x 53° D Telephoto: 1.7° H x 1° V x 2° D
Video Specifications	
Image Sensor	1/2.8 in. 2.1MP CMOS
Sensor Resolution	1920 H x 1080 V
Measured Resolution	850 TVL
Faceplate Illumination	0.024 Lux (50IRE)
Signal to Noise	>50dB
Video Output	HD-SDI 1.5Gb/s 1080p/60, 1080p/59.94, 1080p/50, 1080p/30, 1080p/29.97, 1080p/25, 1080i/60, 1080i/59.94, 1080i/50, 720p/60, 720p/59.94, 720p/50, 720p/30, 720p/29.97, 720p/25
Serial Protocol	VISCA
Environmental Specifications	
Depth Rating	Ti: 6,000 m Al: 2,000 m
Operating Temp	-5° C to 60° C [23° F to 140° F]
Storage Temp	-20° C to 60° C [-4° F to 140° F]
Electrical Specifications	
Voltage	10~36 VDC
Power	9W max
Mechanical Specifications	
Housing	6061 Aluminum 6Al-4V Titanium
Port	Optically polished glass
Outer Diameter	95.5 mm [3.76 in.]
Overall Length	226.6 mm [8.92 in.]
Weight in Air	Al: 2.18 kg [4.80 lbs] Ti: 2.73 kg [6.02 lbs]
Weight in Water	Al: 0.62 kg [1.37 lbs] Ti: 1.16 kg [2.56 lbs]
Default Connectors	
FleXlink[®]	SEACON MCBH8-NET
Coax	SubConn HF75CXBH6M-SS

