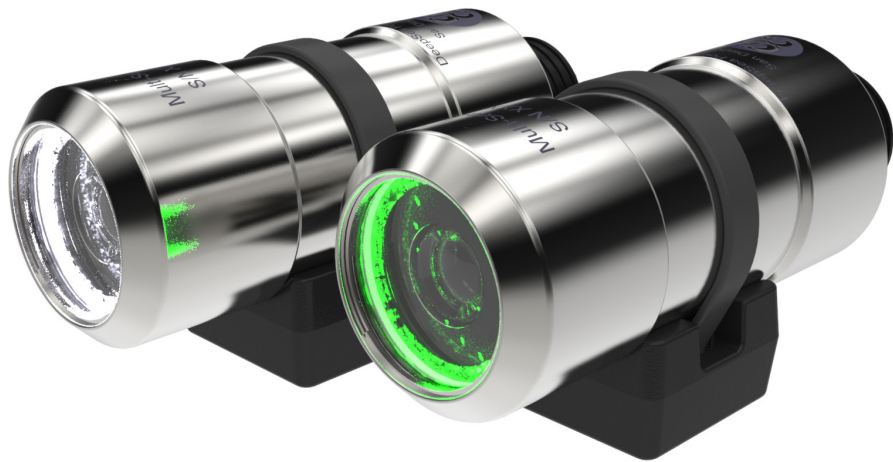


**DEEPSSEA**  
Power & Light<sup>®</sup>



# LED Multi SeaCam<sup>®</sup>

The Multi-Purpose, Versatile Camera with Built-in LEDs.



## FEATURES

**Color, Black & White, or Low-Light Black & White**

**Titanium Housing Depth Rated to 4,000 m**

**Scratch-Resistant Sapphire Port**

**Interchangeable Camera Modules**

**Compact Rugged Design**

**Integrated Variable LED Illumination**

T: (858) 576-1261  
F: (858) 576-0219

4033 Ruffin Road  
San Diego, CA  
92123- 1817 USA

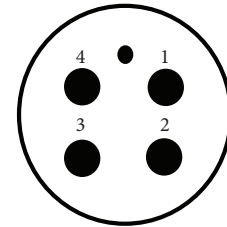
[www.deepsea.com](http://www.deepsea.com)  
[sales@deepsea.com](mailto:sales@deepsea.com)



# LED Multi SeaCam®

	MSC-1055	MSC-1065	MSC-2065
<b>Optical Specifications</b>			
<b>Lens</b>	2.8 mm, f/2.8	5 mm, f/2.8	3.0 mm, f/2.0
<b>Focus</b>	Fixed focus, wide angle	Fixed focus	Fixed focus, wide angle
<b>Depth of Field</b>	10 cm [4 in.] to infinity	30 cm [12 in.] to infinity	10 cm [4 in.] to infinity
<b>FOV in Air</b>	106° H x 78° V x 149° D	77° H x 56° V x 98° D	95° H x 75° V x 130° D
<b>FOV in Water</b>	77° H x 59° V x 98° D	57° H x 45° V x 71° D	75° H x 60° V x 85° D
<b>Video Specifications</b>			
<b>Image Sensor</b>	1/3 inch CCD image sensor	1/2 inch CCD image sensor	1/3 inch CCD image sensor
<b>Number of Pixels</b>	537 H x 505 V (EIA)	811 H x 508 V (EIA); 795 H x 596 V (CCIR)	768 H x 494 V (NTSC); 752 H x 582 V (PAL)
<b>Resolution</b>	400+ TV lines horizontal	570 TV lines horizontal	460 TV lines horizontal
<b>Scene Illumination</b>	0.27 Lux at f2.8	0.01 Lux at f2.8	1.1 Lux at f2.0
<b>Signal to Noise</b>	More than 45 dB	46 dB	More than 45 dB
<b>Video Output</b>	1.0 volt peak-to-peak into 75 ohm		
<b>Video Format</b>	EIA (RS170)	EIA (RS170) or CCIR	NTSC or PAL
<b>Environmental Specifications</b>			
<b>Depth Rating</b>	4,000 m		
<b>Operating Temp.</b>	-20° C to 40° C [-4° F to 104° F]	-10° C to 40° C [14° F to 104° F]	-30° C to 40° C [-22° F to 104° F]
<b>Electrical Specifications</b>			
<b>Power</b>	11~30 VDC Below 14 VDC, the LED output maybe diminished.	11~30 VDC Below 14 VDC, the LED output maybe diminished.	11~30 VDC Below 14 VDC, the LED output maybe diminished.
<b>Current</b>	Camera 110 mA LED's 0~250 mA Total max 360 mA	Camera 160 mA LED's 0~250 mA Total max 410 mA	Camera 200 mA LED's 0~250 mA Total max 450 mA
<b>LED Color Ring</b>	Green	Green	White
<b>Mechanical Specifications</b>			
<b>Housing</b>	Titanium		
<b>Port</b>	Sapphire		
<b>Outer Diameter</b>	47.4 mm [1.86 in.]		
<b>Overall Length (w/o connector)</b>	106.5 mm [4.19 in.]		
<b>Weight in Air</b>	459 g [16 oz.]		
<b>Weight in Water</b>	112 g [4 oz.]		

## Standard Connector

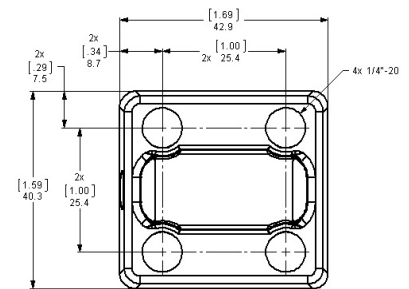
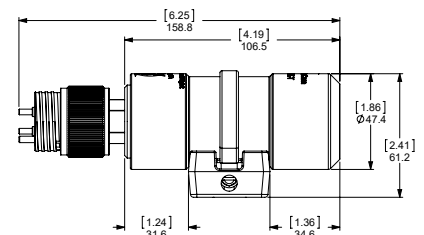


### BH4MP

- 1 = Ground
- 2 = Power
- 3 = Video
- 4 = Not Used

\*Other connectors and pin-out options are available upon request.

## Dimensions



[inch]  
mm