

DEEPSEA
Power & Light®



Multi SeaCam®

The Multi-Purpose, Versatile Workhorse of All Cameras.



FEATURES

Color, Black & White, or Low-Light Black & White

300 m or 6,000 m Depth Rated

Scratch-Resistant Sapphire Port

Interchangeable Camera Modules

Compact Rugged Design

T: (858) 576-1261
F: (858) 576-0219

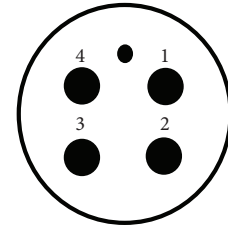
4033 Ruffin Road
San Diego, CA
92123- 1817 USA

www.deepsea.com
sales@deepsea.com



Multi SeaCam®

Standard Connector



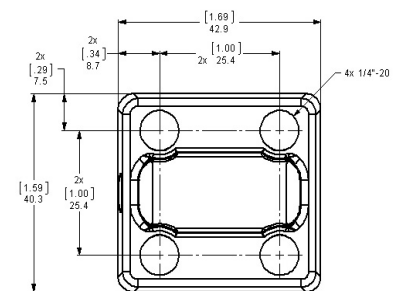
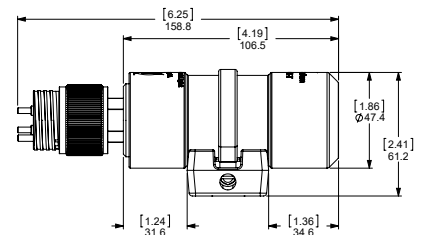
BH4MP

- 1 = Ground
- 2 = Power
- 3 = Video
- 4 = Not Used

*Other connectors and pin-out options are available upon request.

	MSC-1050 (B & W)	MSC-1060 (Low-Light B & W)	MSC-2060 (Color)
Optical Specifications			
Lens	2.8 mm, f/2.8	5 mm, f/2.8	3.0 mm, f/2.0
Focus	Fixed focus, wide angle	Fixed focus	Fixed focus, wide angle
Depth of Field	10 cm [4 in.] to infinity	30 cm [12 in.] to infinity	10 cm [4 in.] to infinity
FOV in Air	106° H x 78° V x 149° D	77° H x 56° V x 98° D	95° H x 75° V x 130° D
FOV in Water	77° H x 59° V x 98° D	57° H x 45° V x 71° D	75° H x 60° V x 85° D
Video Specifications			
Image Sensor	1/3-inch CCD image sensor	1/2-inch CCD image sensor	1/3-inch CCD image sensor
Number of Pixels	537 H x 505 V (EIA) 537 H x 595 V (CCIR)	811 H x 508 V (EIA) 795 H x 596 V (CCIR)	768 H x 494 V (NTSC) 752 H x 582 V (PAL)
Resolution	400+ TV lines horizontal	570 TV lines horizontal	460 TV lines horizontal
Scene Illumination	0.27 Lux at f/2.8	0.01 Lux at f/2.8	1.1 Lux at f/2.0
Signal to Noise	More than 45 dB	46 dB	More than 45 dB
Video Output	Composite, 1.0 V p-p 75 ohm, Unbalanced	Composite, 1.0 V p-p 75 ohm, Unbalanced	Composite, 1.0 V p-p 75 ohm, Unbalanced
Video Format	EIA (RS170) only	EIA (RS170) or CCIR	NTSC or PAL
Environmental Specifications			
Depth Rating	Delrin: 300 m Titanium: 6,000 m		
Operating Temp.	-20° C to 40° C [-4° F to 104° F]	-10° C to 40° C [14° F to 104° F]	-30° C to 40° C [-22° F to 104° F]
Electrical Specifications			
Power	11~30 VDC		
Current	Camera 110 mA	Camera 160 mA	Camera 200mA
Mechanical Specifications			
Housing	Delrin or Titanium		
Port	Sapphire		
Outer Diameter	47.4 mm [1.86 in.]		
Overall Length (w/o connector)	106.5 mm [4.19 in.]		
Weight in Air	Delrin: 296 g [10.5 oz.] Titanium: 459 g [16 oz.]		
Weight in Water	Delrin: 56 g [2 oz.] Titanium: 112 g [4 oz.]		
Accessory			
UV Cutout Filter	UV cutout filter for use with UV Mini SeaLite (may reduce Field of View)		

Dimensions



[inch]
mm



T: (858) 576-1261
F: (858) 576-0219

4033 Ruffin Road
San Diego, CA
92123-1817 USA

www.deepsea.com
sales@deepsea.com



REV 06/29/18

*Specifications subject to change without notice.