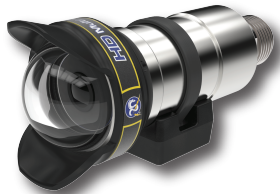


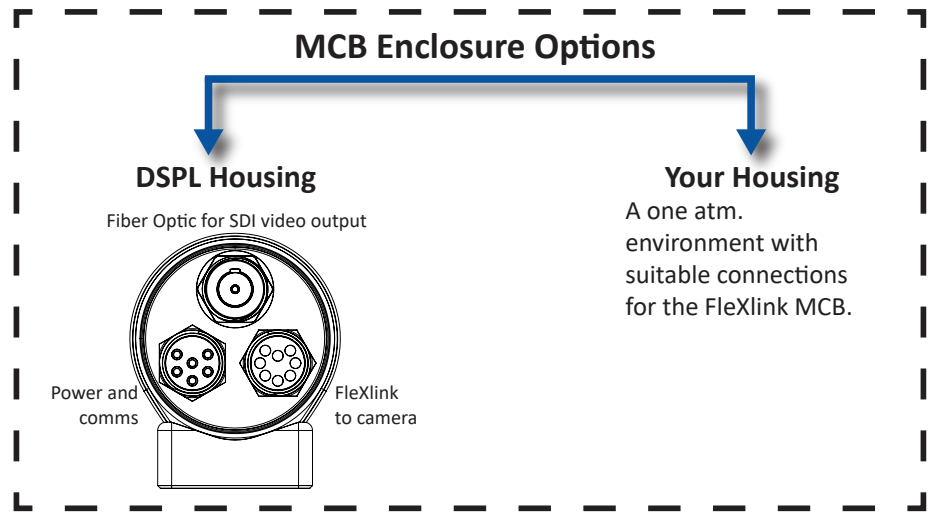
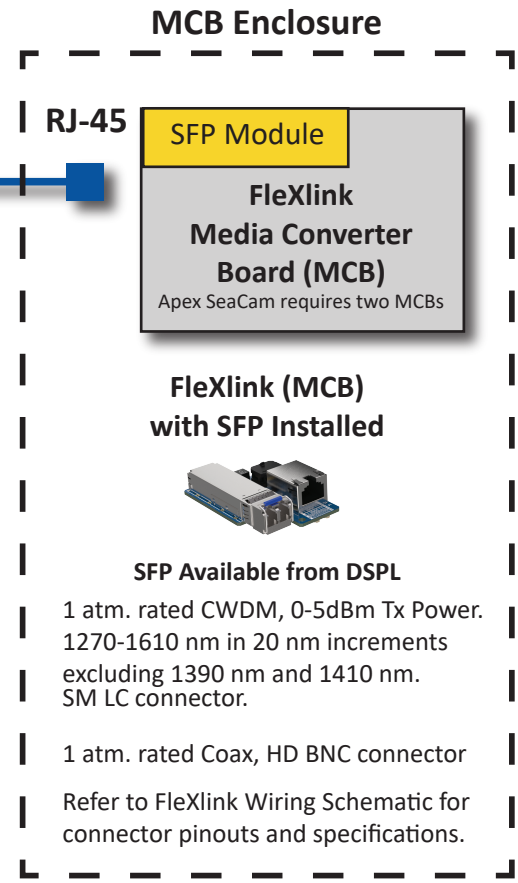
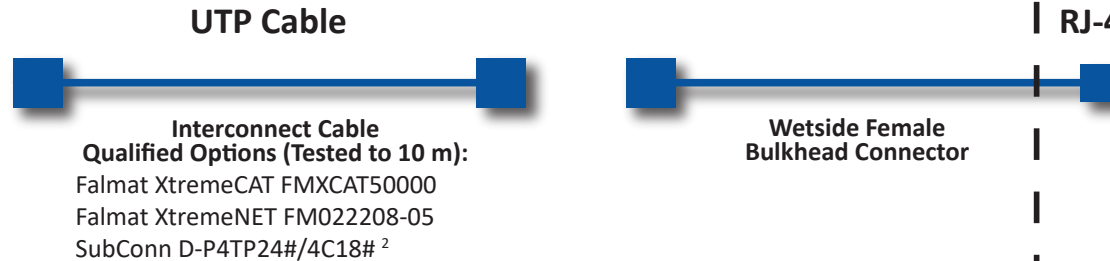
Flexlink[®]

System Overview

Apex™ SeaCam^{® 1}
 HD Zoom SeaCam[®]
 HD Multi SeaCam[®]



Connector Options:
 SEACON MCBH8M-NET
 SubConn DBH8M-NET
 SubConn DLPBH
 Teledyne Impulse MHDG NetG
 AK Industries LP Ethernet



¹The Apex SeaCam uses two 3G-SDI signals to transmit video. This setup requires two Flexlink media converters and corresponding 3G-SDI data channels.

²Only available with SubConn.