

DEESEA
Power & Light®



LED Matrix® - 3 SeaLite®

A Powerful LED Light with Over 18,000 Lumens



FEATURES

6000 m Depth Rated

Remote Option

Light Output 40% Greater than 400W HMI

Super Rugged, Resistant to Shock and Vibration

Operates in Air or Water

Virtually Zero Maintenance

T: (858) 576-1261
F: (858) 576-0219

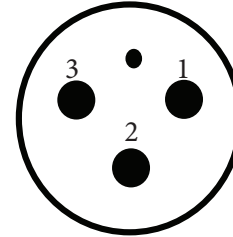
4033 Ruffin Road
San Diego, CA
92123- 1817 USA

www.deepsea.com
sales@deepsea.com



LED Matrix® - 3 SeaLite®

Standard Connector

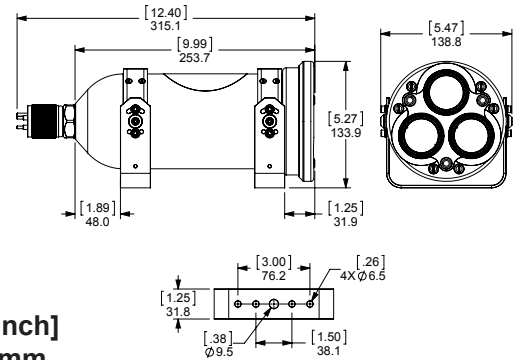


BH3MP

- 1 = Hot (DC +)
- 2 = Neutral (DC -)
- 3 = Chassis

**Other connectors and pin-out options are available upon request.*

Dimensions



[inch]
mm

Mechanical Specifications	
Body Material	Hard Anodized Aluminum (7075)
Window Material	Sapphire
Mounts	High Strength Stainless Steel Yoke (standard)
Air Weight	3.98 kg [8.8 lbs]
Water Weight	1.84 kg [4.06 lbs]
Implodable Volume	740 cm ³ [45.16 in ³]
Environmental Specifications	
Depth Rating	6,000 m [20,000 ft]
Test Pressure	10,000 psi
Operation Temp.	-10° C to 40° C [14° F to 104° F]
Optical Specifications	
Color	Standard: Day Light White Optional: Red, Blue
Lumens in the Water	18,000 lumens typical
Color Temp	Standard: 5000K - 6500K
Beam Pattern (FWHP)	Flood: 77° Medium: 52°
Electrical Specifications	
Input	85 - 150 VAC @ 50/60Hz, 75-200 VDC, 375W max or 150 VAC - 250 VAC @ 50/60Hz, 200-300 VDC, 375W max
Dimming	AC phase control dimmer



4033 Ruffin Road
San Diego, CA
92123-1817 USA

www.deepsea.com
sales@deepsea.com



T: (858) 576-1261
F: (858) 576-0219