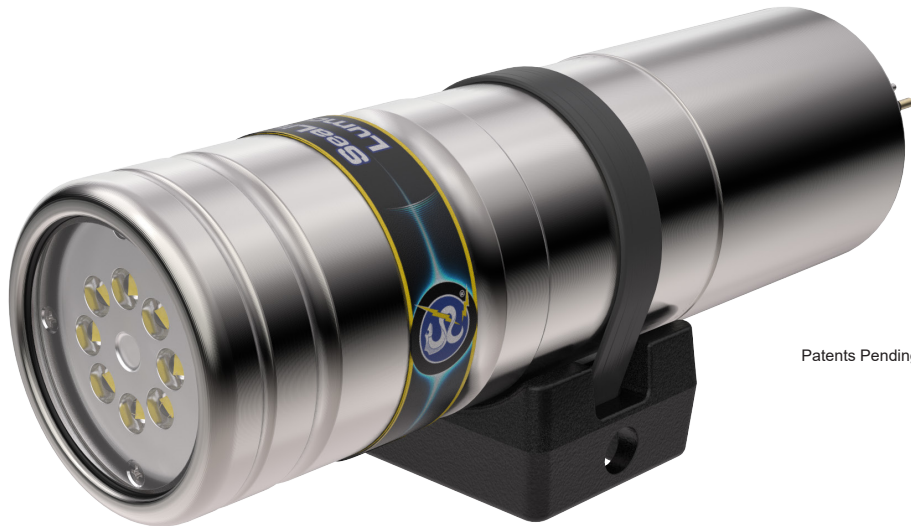


DEEPSEA
Power & Light®



SeaLite® Lumos



Patents Pending

FEATURES

High performance LED lighthouse

Fully protected inputs, resistant to over voltage, over current and thermal fault

Highly Vibration and Shock Resistant

Virtually Zero Maintenance

T: (858) 576-1261
F: (858) 576-0219

4033 Ruffin Road
San Diego, CA
92123- 1817 USA

www.deepsea.com
sales@deepsea.com

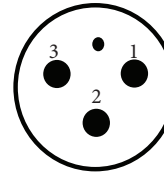


SeaLite® Lumos

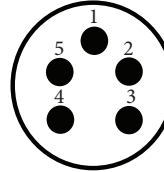
	SLL-1000	SLL-2000
Optical Specifications		
Typical Lumen Output	3,000	
Color	Day Light White 5000K - 6500K Contact Sales for Color Options	
Beam Angle (HPFW)	Flood: 85° or Spot: 32°	
Environmental Specifications		
Depth Rating	6,000 m	
Operational Temperature	-10° C to 40° C [14° F to 104° F]	
Electrical Specifications		
Voltage	90~270 VAC, 50/60Hz 100~350 VDC	10~36 VDC
Current	0.27A @ 120 VAC 0.13A @ 240 VAC	1.10A @ 24 VDC 2.65A @ 10 VDC
Power	32.0W max	26.5W max
Dimming	AC phase control (TRIAC) variable voltage (VARIAC)	0~5 VDC
Mechanical Specifications		
Housing	Titanium	
Port	Sapphire	
Outer Diameter	47.5 mm [1.87 in.]	
Overall Length (Without Connector)	154.3 mm [6.08 in]	
Weight in Air	710 g [1.56 lbs]	
Weight in Water	400 g [0.88 lbs]	
Connector		
Default	SEACON MCBHMP Contact sales for more options.	

1 Titanium Housing, Universal Driver, Spot Reflector model.

Standard Connectors



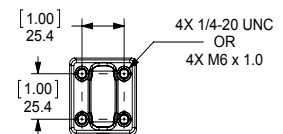
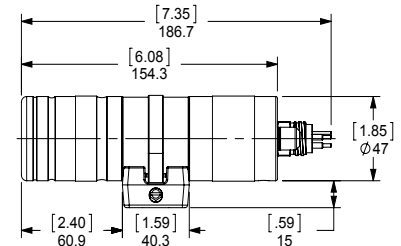
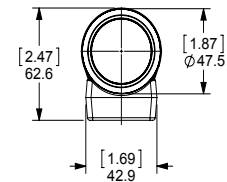
**MCBH3MP
(High Voltage AC/DC)**
1 = Hot (DC +)
2 = Neutral (DC -)
3 = Chassis



**MCBH5MP
(Low Voltage DC)**
1 = DC+
2 = DC-
3 = Chassis
4 = Not Used
5 = 0-5 V DC Control
(0-5V DC Control referenced to Pin 2)

*Other connector options are available upon request.

Dimensions



[inch]
mm