

DEEPSEA
Power & Light[®]



UV/IR SeaLite[®] Six

A Perfect Tool for Leak Detection & MPI.



Patents Pending

FEATURES

Extremely Powerful UV or IR LED Light

**Suitable for Any Leak Detection
& Magnetic Particle Inspection**

Multiple AC & DC Input Power Configurations

Highly Vibration & Shock Resistant

Virtually Zero Maintenance

Safe to Operate In or Out of Water

T: (858) 576-1261
F: (858) 576-0219

4033 Ruffin Road
San Diego, CA
92123- 1817 USA

www.deepsea.com
sales@deepsea.com



UV/IR SeaLite® Six

Mechanical Specifications

Housing	Anodized Aluminum (6013-T8) Stainless Steel (optional) Titanium (optional)
Port	Sapphire
Outer Diameter	46.9 mm (1.85 in.)
Overall Length (w/o Connector)	151.1 mm (5.95 in)
Weight in Air	0.45 kg (0.99 lbs)
Weight in Water	0.18 kg (0.40 lbs)

Environmental Specifications

Depth Rating	6000 m (20,000 ft)
Operating Temp	-10° C to 40° C (14° F to 104° F)

Optical Specifications

LED Options	UV	IR
Wavelength	365 nm & 405 nm	850 nm
Beam Pattern	Flood: 65° Spot (External Reflector): 12°	

Electrical Specifications

Input Voltage	10-36V DC	90-270V AC, 50/60Hz 100-350V DC
Current	0.98A @ 24V DC 2.5A @ 10V DC	0.18A @ 120V AC 0.10A @ 240V AC
Power	~23.5W	~24.4W

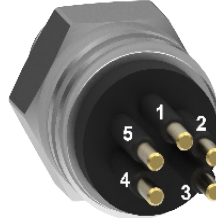
Standard Connectors



MCBH3MP

(High Voltage AC/DC Only)

- 1 = Hot (DC +)
- 2 = Neutral (DC -)
- 3 = Chassis



MCBH5MP

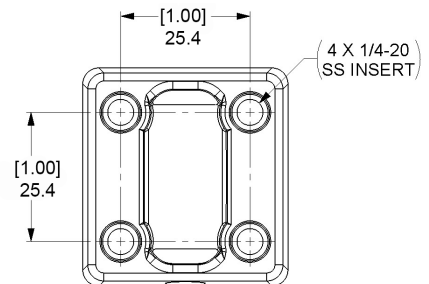
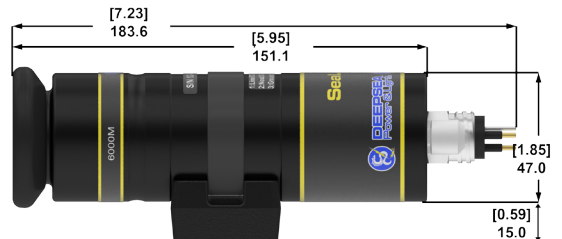
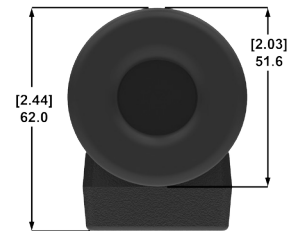
(Low Voltage DC Option)

- 1 = Pos(+)
- 2 = Neg (-)
- 3 = Chassis
- 4 = Not Used
- 5 = Pos 0-5V DC Dimming Control

*0-5V DC Control Ground to Pin 2

*Other connectors and pin-out options available upon request.

Dimensions



[inch]
mm



4033 Ruffin Road
San Diego, CA
92123-1817 USA

www.deepsea.com
sales@deepsea.com



T: (858) 576-1261
F: (858) 576-0219