

LED SeaLite® 1000

True Lumens Reports

| Table of Contents | | | | |
|-------------------|--------------|----------|----------|-------------------|
| LED Color | Beam Pattern | Port | Housing | Page |
| Day Light White | Flood | Acrylic | Aluminum | 2 |
| Day Light White | Flood | Sapphire | Aluminum | 3 |
| Day Light White | Spot | Sapphire | Aluminum | 4 |
| Day Light White | Spot | Sapphire | Titanium | 5 |
| Warm White | Wide Flood | Acrylic | Aluminum | 6 |
| Warm White | Flood | Sapphire | Aluminum | 7 |
| Warm White | Flood | Sapphire | Titanium | 8 |

TRUE LUMENS Report

Part Description LSL-1000, Day Light White, Flood, Acrylic Port, Aluminum Housing

Serial Number
Operator Name
Date

Comments: Final Lumens Measurement

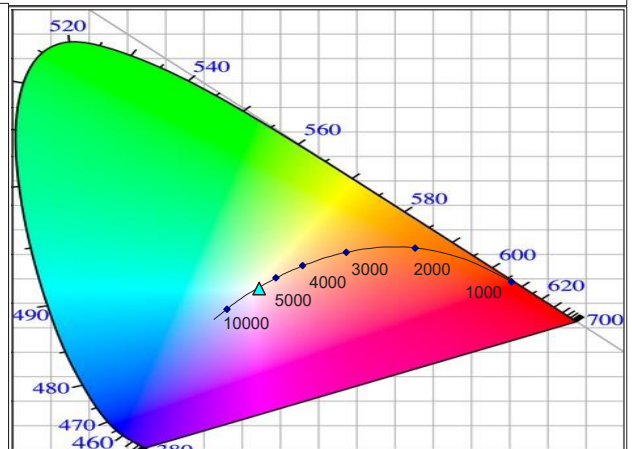
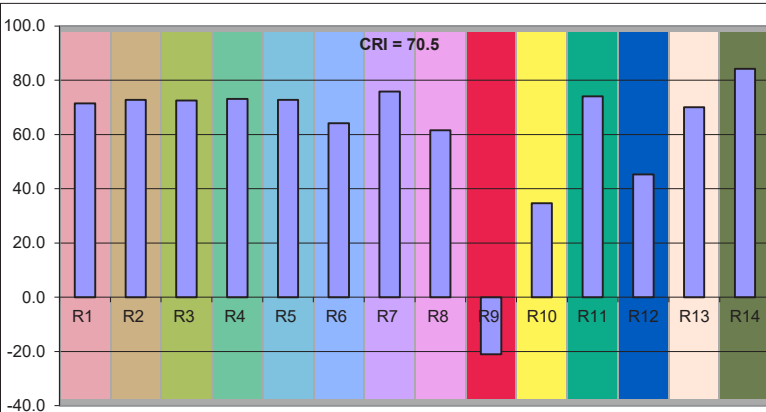
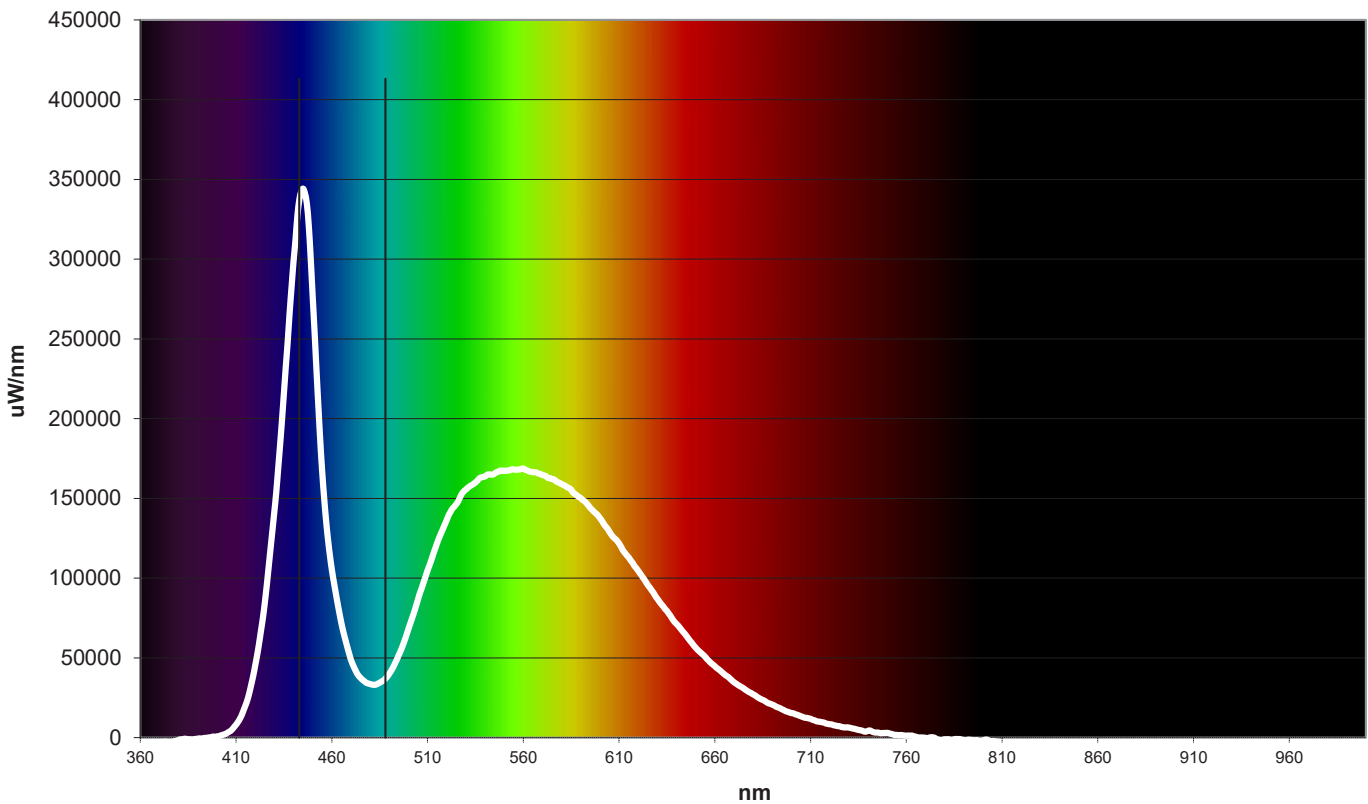


| Spectral Parameters | |
|---------------------|----------|
| Lumens | 10097 Lm |
| CCT | 5942 K |
| Radiant Power | 25.65 W |
| Dominant Wavelength | 488 nm |
| Peak Wavelength | 443 nm |
| Purity | 3.5 |

| CIE Chromaticity | |
|------------------|--------|
| CIE x | 0.3233 |
| CIE y | 0.3303 |
| CIE z | 0.3464 |
| u prime | 0.2047 |
| v prime | 0.4706 |

| CRI = 70.5 | |
|------------|------------|
| R1 = 71.5 | R8 = 61.5 |
| R2 = 72.8 | R9 = -21.8 |
| R3 = 72.5 | R10 = 34.6 |
| R4 = 73.1 | R11 = 74.1 |
| R5 = 72.7 | R12 = 45.3 |
| R6 = 64.2 | R13 = 70.0 |
| R7 = 75.8 | R14 = 84.2 |

Radiant Plot



TRUE LUMENS Report

Part Description LSL-1000, Day Light White, Flood, Sapphire Port, Aluminum Housing

Serial Number
Operator Name
Date

Comments: Final Lumens Measurement

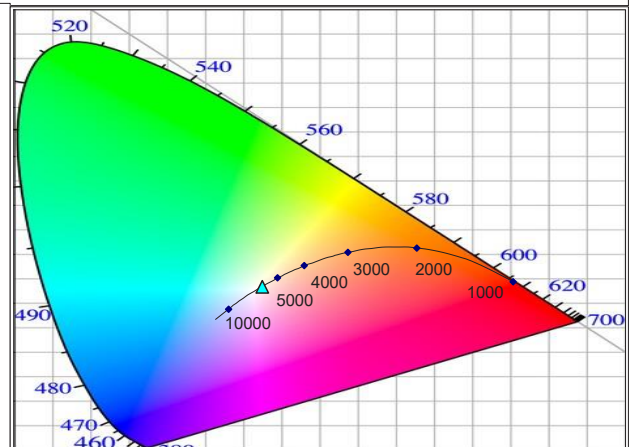
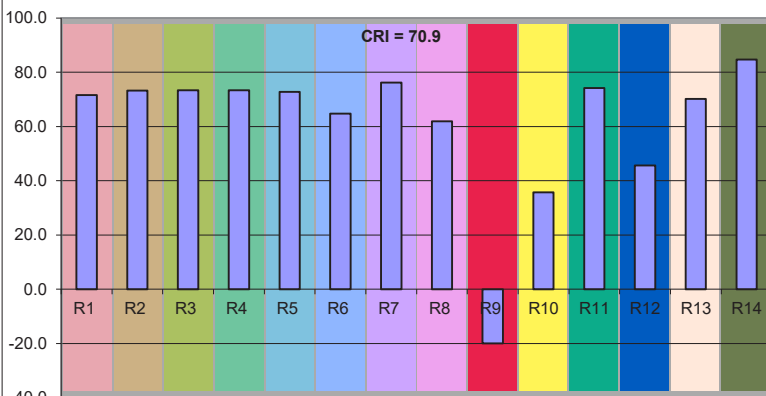
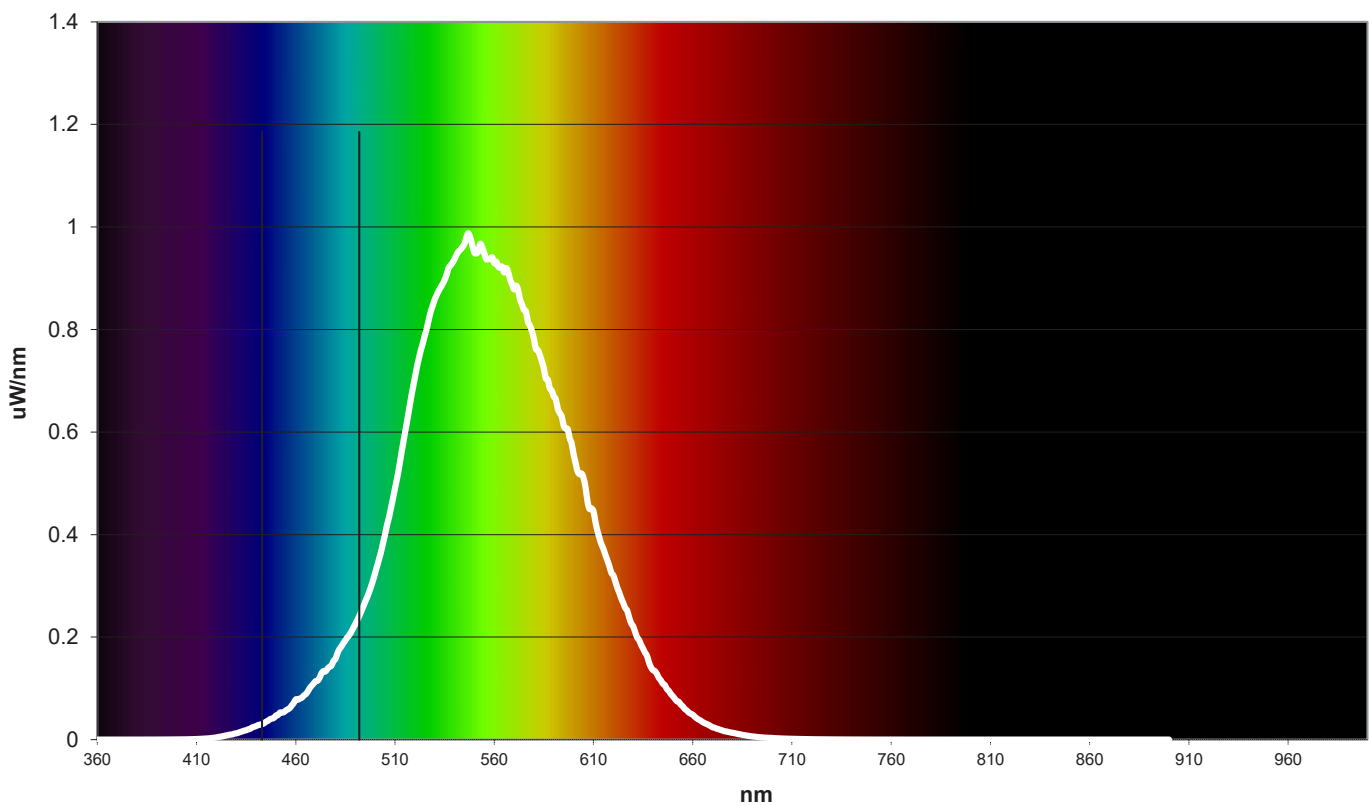


| Spectral Parameters | |
|---------------------|----------|
| Lumens | 10511 Lm |
| CCT | 5831 K |
| Radiant Power | 33.34 W |
| Dominant Wavelength | 492 nm |
| Peak Wavelength | 443 nm |
| Purity | 2.6 |

| CIE Chromaticity | |
|------------------|--------|
| CIE x | 0.3253 |
| CIE y | 0.3338 |
| CIE z | 0.3409 |
| u prime | 0.2048 |
| v prime | 0.4727 |

| CRI = 70.9 | |
|------------|------------|
| R1 = 71.6 | R8 = 61.9 |
| R2 = 73.2 | R9 = -20.1 |
| R3 = 73.3 | R10 = 35.7 |
| R4 = 73.3 | R11 = 74.2 |
| R5 = 72.7 | R12 = 45.6 |
| R6 = 64.7 | R13 = 70.2 |
| R7 = 76.2 | R14 = 84.7 |

Radiant Plot



TRUE LUMENS Report

Part Description LSL-1000, Day Light White, Spot,
Sapphire Port, Aluminum Housing

Serial Number
Operator Name
Date

Comments: Final Lumens Measurement

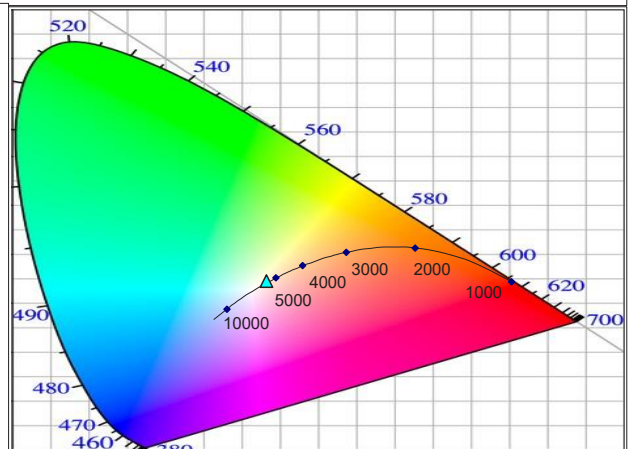
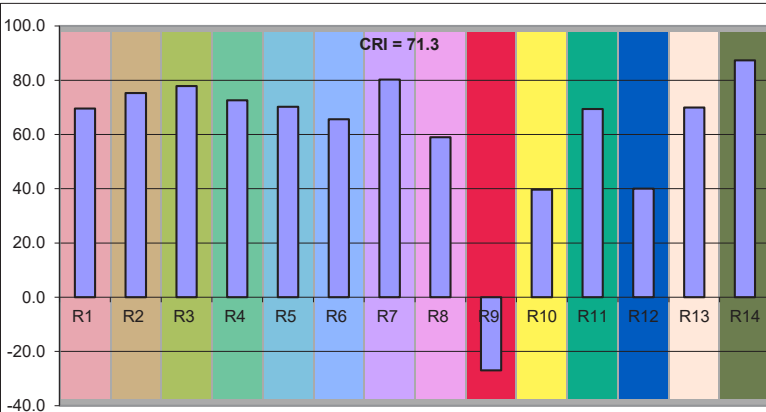
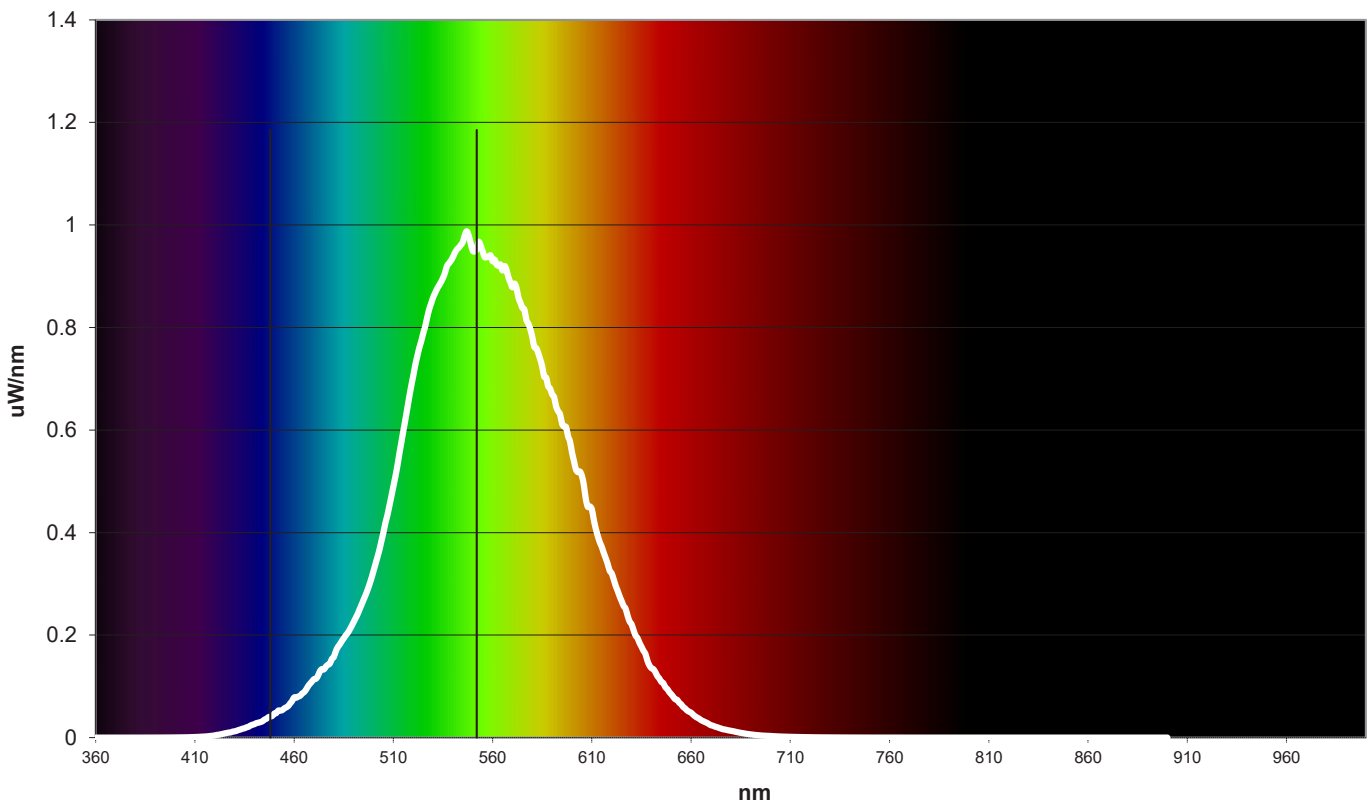


| Spectral Parameters | |
|---------------------|---------|
| Lumens | 7327 Lm |
| CCT | 5492 K |
| Radiant Power | 21.54 W |
| Dominant Wavelength | 552 nm |
| Peak Wavelength | 448 nm |
| Purity | 3.6 |

| CIE Chromaticity | |
|------------------|--------|
| CIE x | 0.3326 |
| CIE y | 0.3454 |
| CIE z | 0.3220 |
| u prime | 0.2053 |
| v prime | 0.4797 |

| CRI = 71.3 | |
|------------|------------|
| R1 = 69.6 | R8 = 59.0 |
| R2 = 75.3 | R9 = -27.9 |
| R3 = 77.8 | R10 = 39.7 |
| R4 = 72.6 | R11 = 69.4 |
| R5 = 70.2 | R12 = 40.0 |
| R6 = 65.6 | R13 = 69.9 |
| R7 = 80.2 | R14 = 87.3 |

Radiant Plot



TRUE LUMENS Report

Part Description LSL-1000, Day Light White, Spot,
Sapphire Port, Titanium Housing

Serial Number
Operator Name
Date

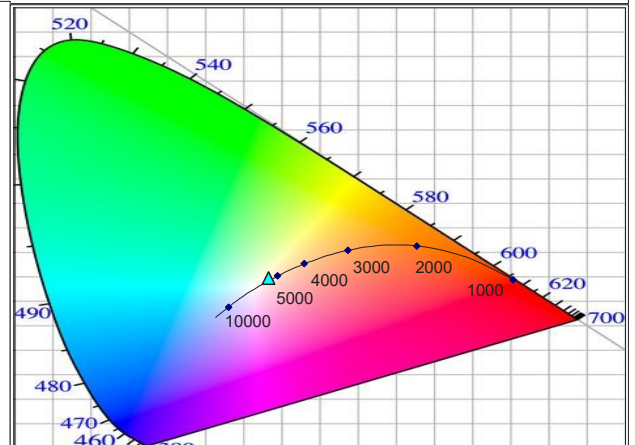
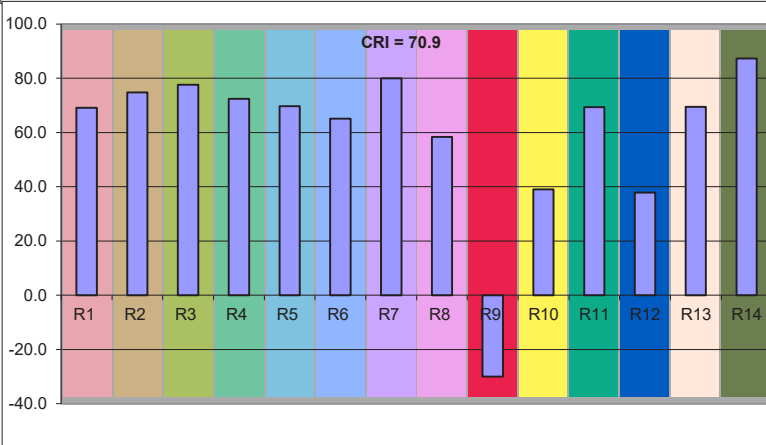
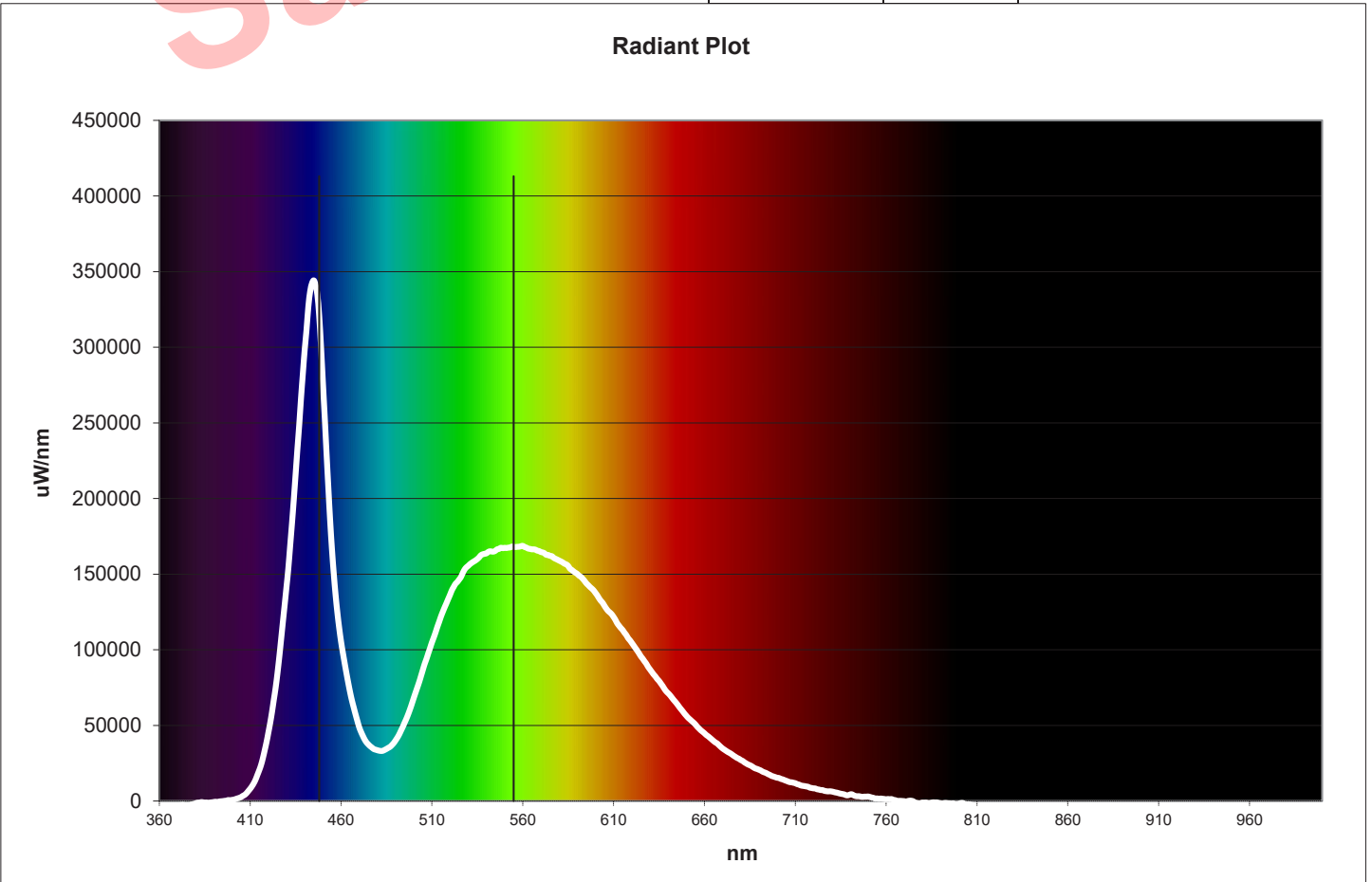
Comments: Final Lumens Measurement



| Spectral Parameters | |
|---------------------|---------|
| Lumens | 4090 Lm |
| CCT | 5463 K |
| Radiant Power | 11.28 W |
| Dominant Wavelength | 555 nm |
| Peak Wavelength | 448 nm |
| Purity | 4.5 |

| CIE Chromaticity | |
|------------------|--------|
| CIE x | 0.3333 |
| CIE y | 0.3477 |
| CIE z | 0.3190 |
| u prime | 0.2049 |
| v prime | 0.4810 |

| CRI = 70.9 | |
|------------|------------|
| R1 = 69.1 | R8 = 58.4 |
| R2 = 74.8 | R9 = -30.0 |
| R3 = 77.6 | R10 = 39.0 |
| R4 = 72.4 | R11 = 69.3 |
| R5 = 69.7 | R12 = 37.8 |
| R6 = 65.1 | R13 = 69.5 |
| R7 = 80.0 | R14 = 87.3 |



TRUE LUMENS Report

Part Description LSL-1000, Warm White, Wide Flood, Acrylic Port, Aluminum Housing

Serial Number
Operator Name
Date

Comments: Final Lumens Measurement

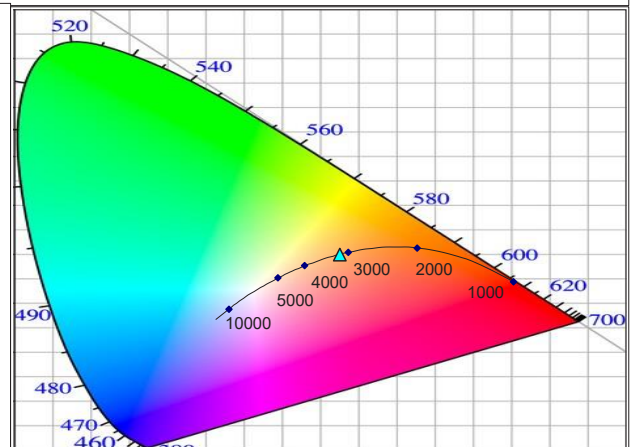
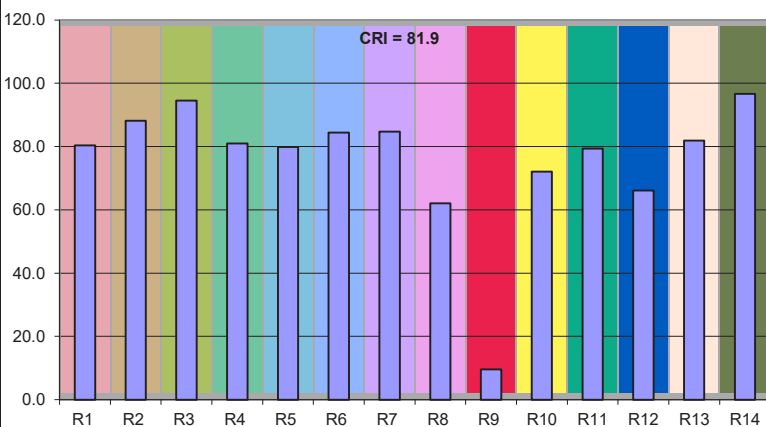
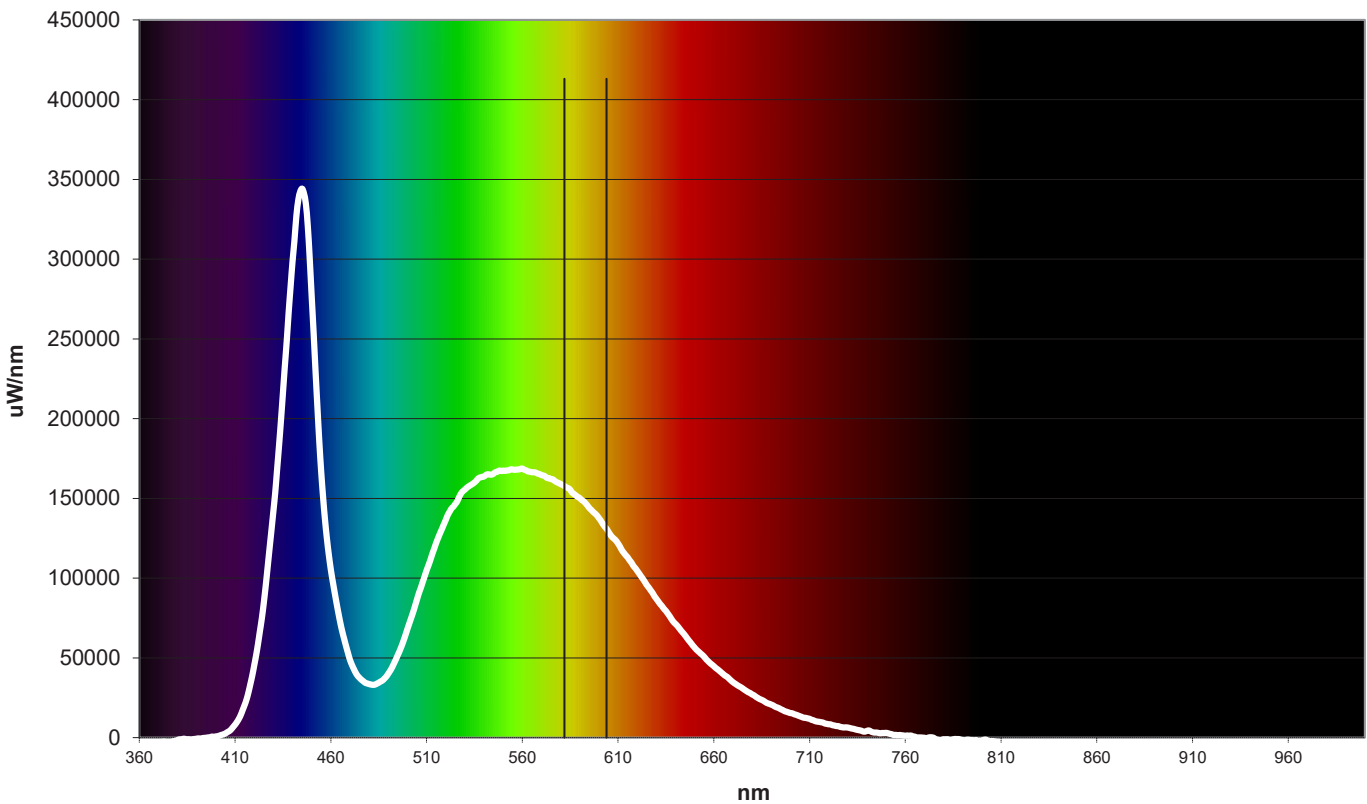


| Spectral Parameters | |
|---------------------|---------|
| Lumens | 5297 Lm |
| CCT | 3157 K |
| Radiant Power | 15.85 W |
| Dominant Wavelength | 582 nm |
| Peak Wavelength | 604 nm |
| Purity | 47.9 |

| CIE Chromaticity | |
|------------------|--------|
| CIE x | 0.4259 |
| CIE y | 0.3996 |
| CIE z | 0.1745 |
| u prime | 0.2453 |
| v prime | 0.5179 |

| CRI = 81.9 | |
|------------|------------|
| R1 = 80.4 | R8 = 62.1 |
| R2 = 88.2 | R9 = 9.6 |
| R3 = 94.5 | R10 = 72.1 |
| R4 = 81.0 | R11 = 79.4 |
| R5 = 79.9 | R12 = 66.1 |
| R6 = 84.4 | R13 = 81.9 |
| R7 = 84.7 | R14 = 96.6 |

Radiant Plot



TRUE LUMENS Report

Part Description LSL-1000, Warm White, Flood,
Sapphire Port, Aluminum Housing

Serial Number
Operator Name
Date

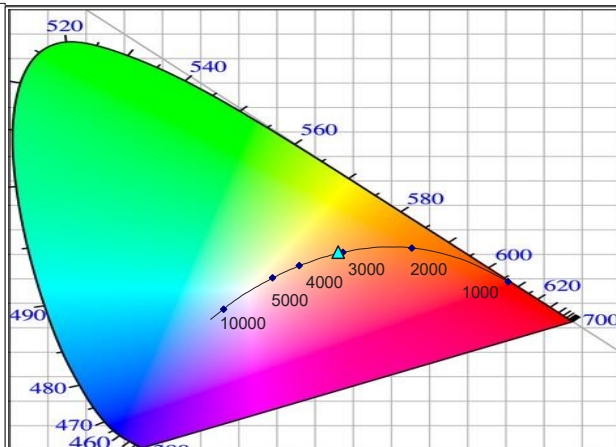
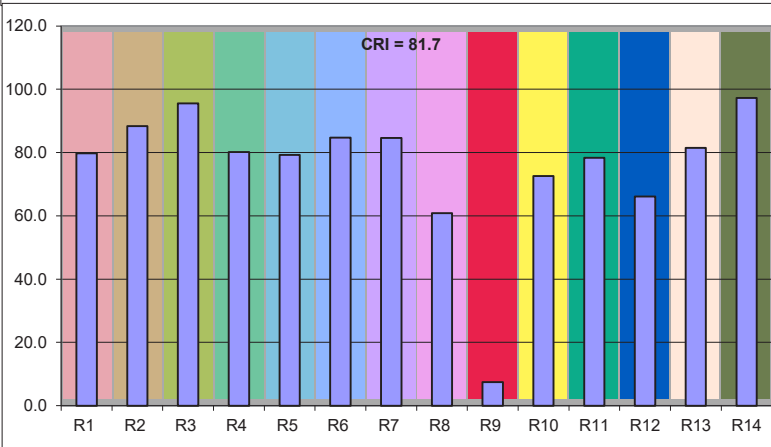
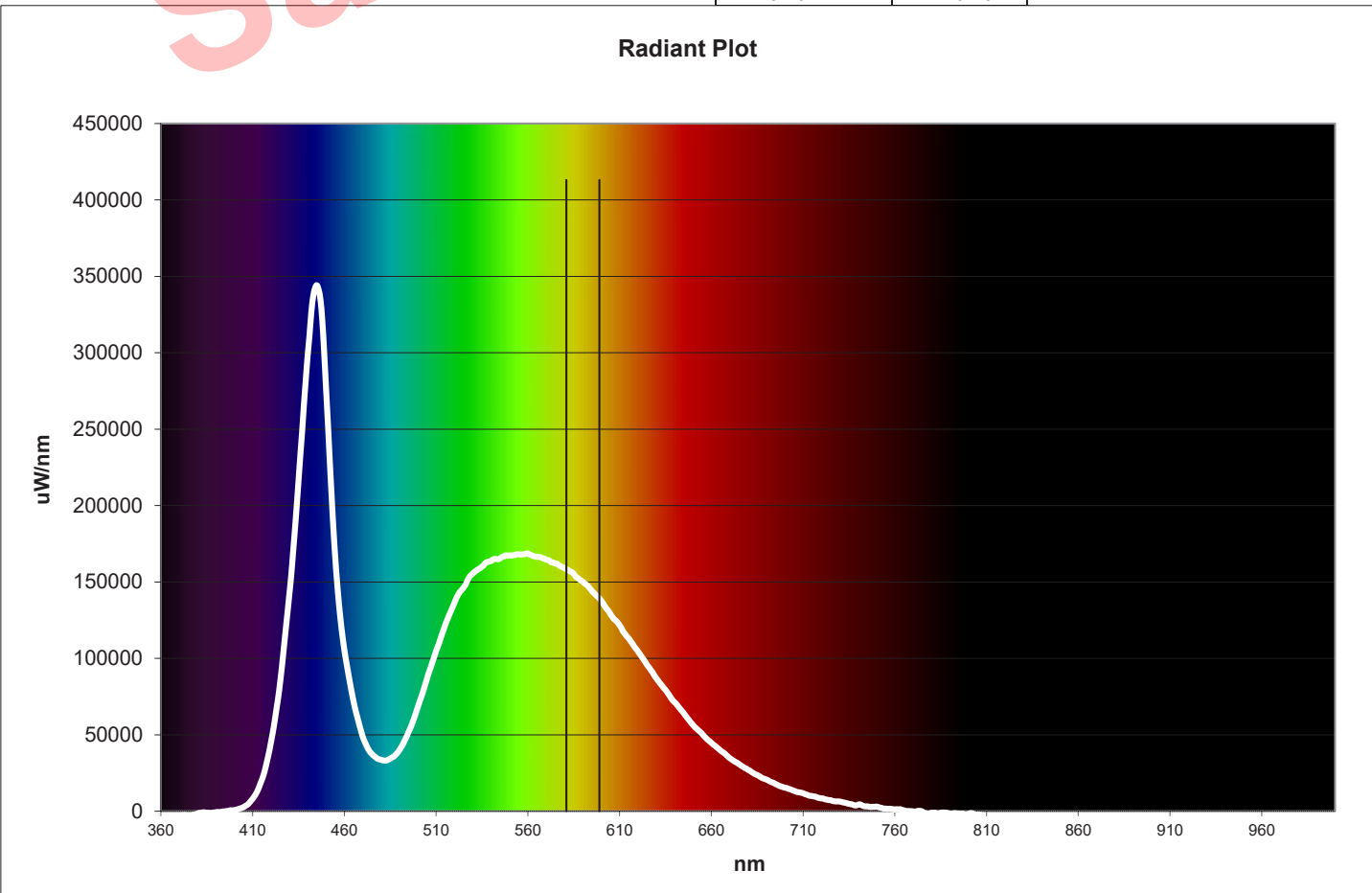
Comments: Final Lumen Test



| Spectral Parameters | |
|---------------------|---------|
| Lumens | 8104 Lm |
| CCT | 3105 K |
| Radiant Power | 24.93 W |
| Dominant Wavelength | 581 nm |
| Peak Wavelength | 599 nm |
| Purity | 51.1 |

| CIE Chromaticity | |
|------------------|--------|
| CIE x | 0.4310 |
| CIE y | 0.4045 |
| CIE z | 0.1645 |
| u prime | 0.2465 |
| v prime | 0.5207 |

| CRI = 81.7 | |
|------------|------------|
| R1 = 79.8 | R8 = 60.9 |
| R2 = 88.4 | R9 = 7.5 |
| R3 = 95.5 | R10 = 72.6 |
| R4 = 80.2 | R11 = 78.3 |
| R5 = 79.3 | R12 = 66.1 |
| R6 = 84.7 | R13 = 81.5 |
| R7 = 84.6 | R14 = 97.3 |



TRUE LUMENS Report

Part Description LSL-1000, Warm White, Flood,
Sapphire Port, Titanium Housing

Serial Number
Operator Name
Date

Comments: Final Lumens Measurement



| Spectral Parameters | |
|---------------------|---------|
| Lumens | 4947 Lm |
| CCT | 3026 K |
| Radiant Power | 15.26 W |
| Dominant Wavelength | 582 nm |
| Peak Wavelength | 608 nm |
| Purity | 53.7 |

| CIE Chromaticity | |
|------------------|--------|
| CIE x | 0.4370 |
| CIE y | 0.4078 |
| CIE z | 0.1552 |
| u prime | 0.2491 |
| v prime | 0.5228 |

| CRI = 82.8 | |
|------------|------------|
| R1 = 81.2 | R8 = 62.6 |
| R2 = 89.0 | R9 = 12.2 |
| R3 = 95.7 | R10 = 74.1 |
| R4 = 82.0 | R11 = 80.8 |
| R5 = 80.7 | R12 = 67.2 |
| R6 = 85.9 | R13 = 82.8 |
| R7 = 85.4 | R14 = 97.3 |

Radiant Plot

