

# Multiray™ LED SeaLite® 2025 True Lumens Reports

## Table of Contents

| Configuration | Array    | LED Color       | Beam Pattern | Port    | Housing  | Page              |
|---------------|----------|-----------------|--------------|---------|----------|-------------------|
| DW00-D02      | Array 1  | Day Light White | Flood        | Acrylic | Titanium | <a href="#">2</a> |
|               | Array 2  |                 | Wide Flood   |         |          | <a href="#">3</a> |
|               | Combined |                 | Mixed        |         |          | <a href="#">4</a> |
| DW00-D01      | Array 1  | Day Light White | Spot         | Acrylic | Aluminum | <a href="#">5</a> |
|               | Array 2  |                 | Flood        |         |          | <a href="#">6</a> |
|               | Combined |                 | Medium       |         |          | <a href="#">7</a> |

# TRUE LUMENS Report

Part Description LSL-2025, Day Light White, Flood,  
Acrylic Port, Titanium Housing



Serial Number

Operator Name

Date

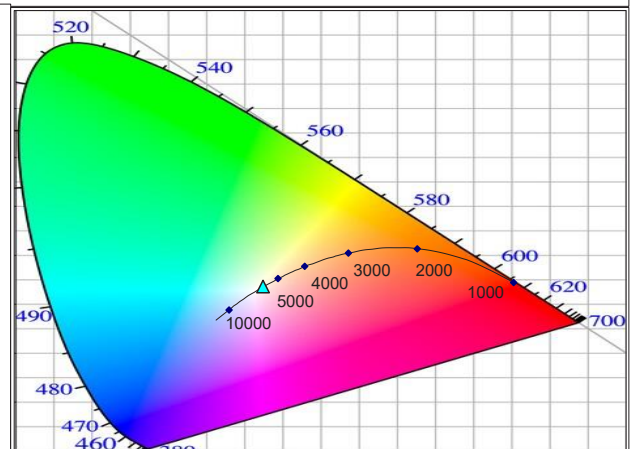
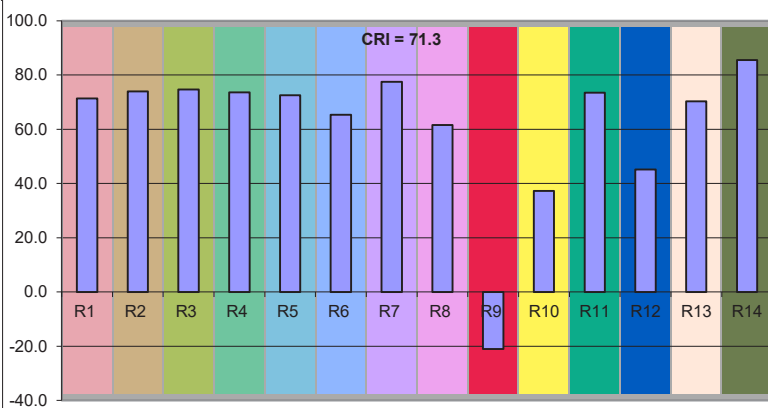
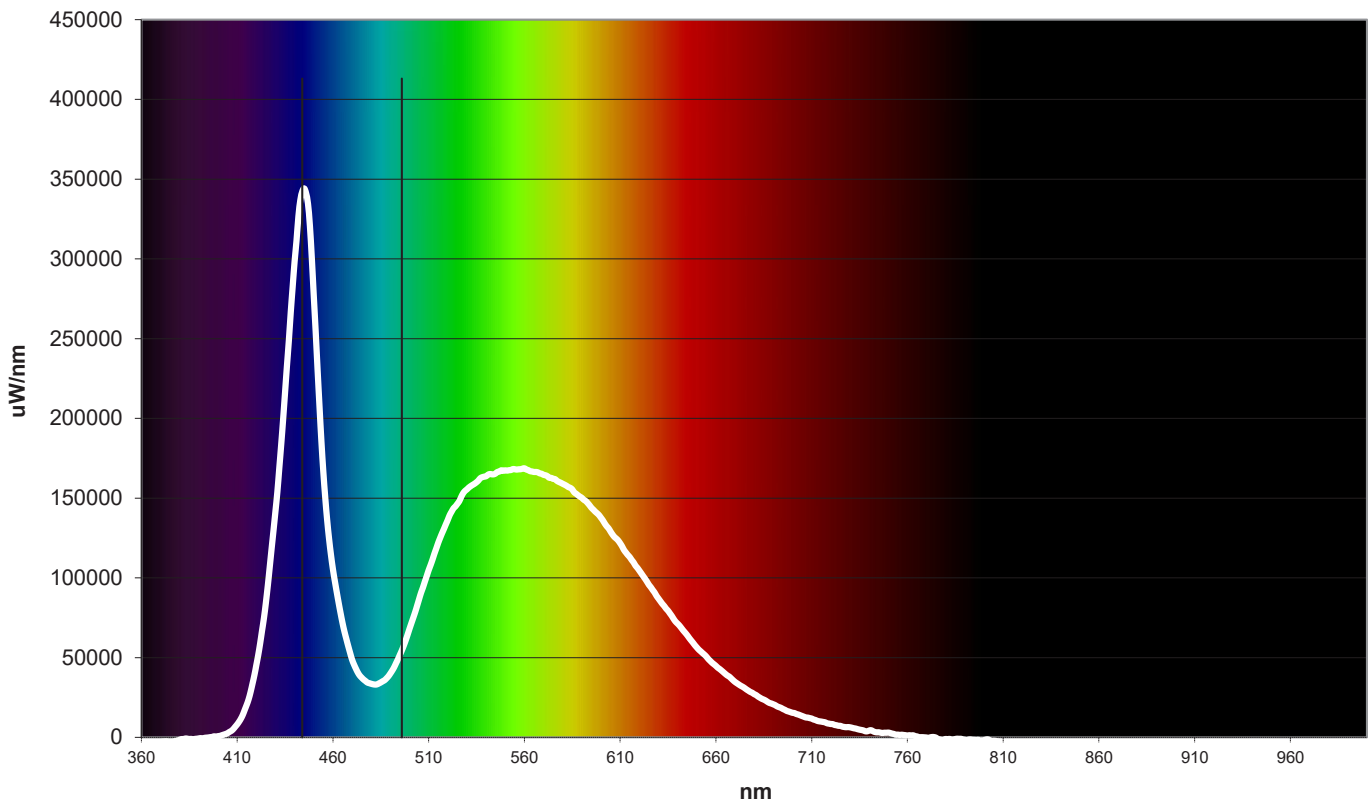
Comments: Final Lumens Measurement - Flood

| Spectral Parameters |         |
|---------------------|---------|
| Lumens              | 4657 Lm |
| CCT                 | 5815 K  |
| Radiant Power       | 14.09 W |
| Dominant Wavelength | 496 nm  |
| Peak Wavelength     | 444 nm  |
| Purity              | 2.4     |

| CIE Chromaticity |        |
|------------------|--------|
| CIE x            | 0.3256 |
| CIE y            | 0.3358 |
| CIE z            | 0.3387 |
| u prime          | 0.2042 |
| v prime          | 0.4738 |

| CRI = 71.3 |            |
|------------|------------|
| R1 = 71.3  | R8 = 61.6  |
| R2 = 73.9  | R9 = -21.4 |
| R3 = 74.6  | R10 = 37.3 |
| R4 = 73.6  | R11 = 73.5 |
| R5 = 72.5  | R12 = 45.1 |
| R6 = 65.3  | R13 = 70.3 |
| R7 = 77.5  | R14 = 85.5 |

Radiant Plot



# TRUE LUMENS Report

Part Description LSL-2025, Day Light White, Wide Flood, Acrylic Port, Titanium Housing

Serial Number  
Operator Name

Date

Comments: Final Lumens Measurement - Wide Flood

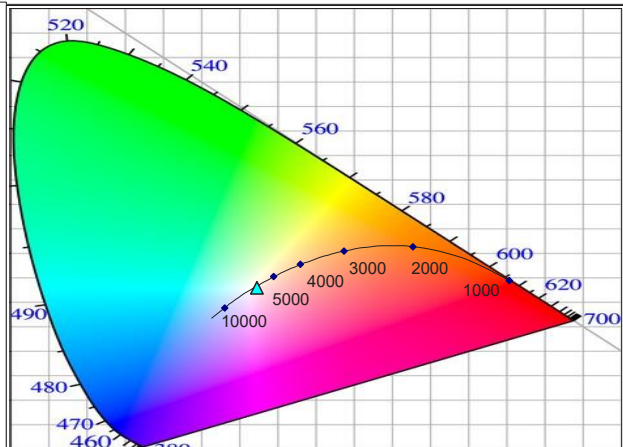
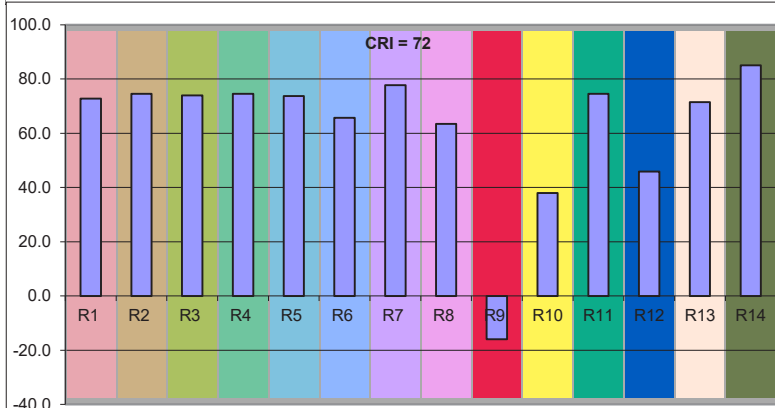
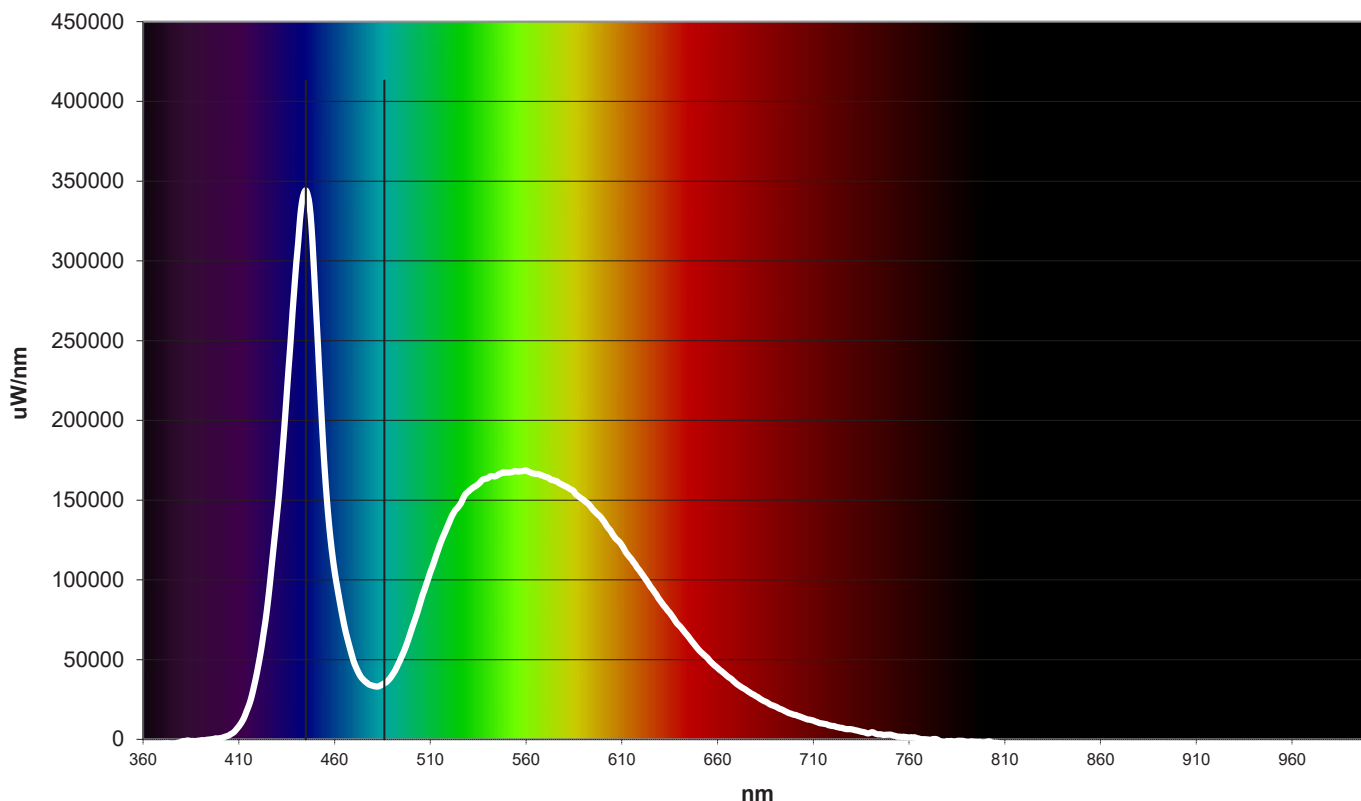


| Spectral Parameters |         |
|---------------------|---------|
| Lumens              | 2874 Lm |
| CCT                 | 5952 K  |
| Radiant Power       | 8.59 W  |
| Dominant Wavelength | 486 nm  |
| Peak Wavelength     | 445 nm  |
| Purity              | 3.6     |

| CIE Chromaticity |        |
|------------------|--------|
| CIE x            | 0.3231 |
| CIE y            | 0.3294 |
| CIE z            | 0.3475 |
| u prime          | 0.2049 |
| v prime          | 0.4701 |

| CRI = 72  |            |
|-----------|------------|
| R1 = 72.7 | R8 = 63.4  |
| R2 = 74.5 | R9 = -16.0 |
| R3 = 73.9 | R10 = 37.9 |
| R4 = 74.5 | R11 = 74.5 |
| R5 = 73.7 | R12 = 45.9 |
| R6 = 65.7 | R13 = 71.5 |
| R7 = 77.7 | R14 = 85.0 |

Radiant Plot



# TRUE LUMENS Report

Part Description LSL-2025, Day Light White, Flood and Wide Flood, Acrylic Port, Titanium Housing

Serial Number

Operator Name

Date

Comments: Final Lumens Measurement - Both

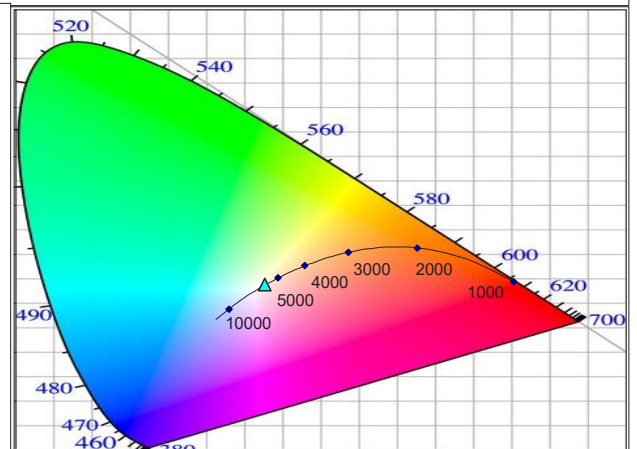
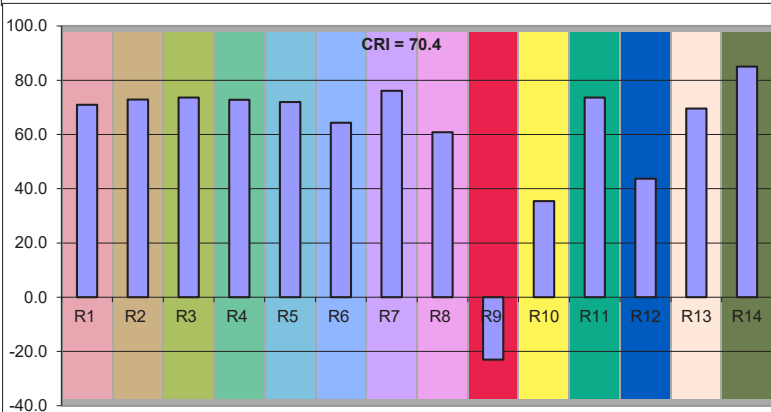
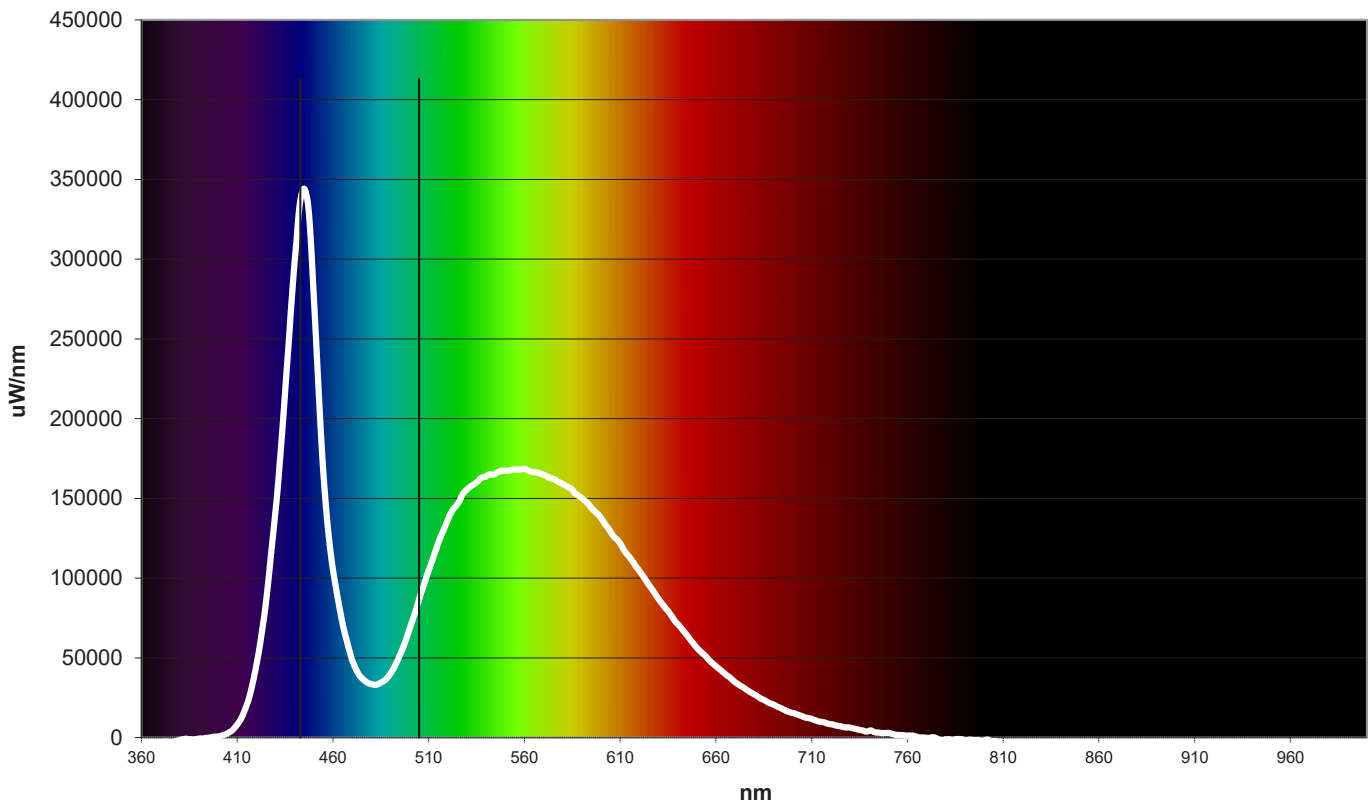


| Spectral Parameters |         |
|---------------------|---------|
| Lumens              | 4548 Lm |
| CCT                 | 5701 K  |
| Radiant Power       | 13.61 W |
| Dominant Wavelength | 505 nm  |
| Peak Wavelength     | 443 nm  |
| Purity              | 1.6     |

| CIE Chromaticity |        |
|------------------|--------|
| CIE x            | 0.3279 |
| CIE y            | 0.3382 |
| CIE z            | 0.3339 |
| u prime          | 0.2049 |
| v prime          | 0.4754 |

| CRI = 70.4 |            |
|------------|------------|
| R1 = 70.9  | R8 = 60.8  |
| R2 = 72.9  | R9 = -23.3 |
| R3 = 73.6  | R10 = 35.4 |
| R4 = 72.8  | R11 = 73.6 |
| R5 = 72.0  | R12 = 43.7 |
| R6 = 64.3  | R13 = 69.6 |
| R7 = 76.1  | R14 = 85.0 |

Radiant Plot



# TRUE LUMENS Report

Part Description LSL-2025, Day Light White, Spot,  
Acrylic Port, Aluminum Housing

Serial Number

Operator Name

Date

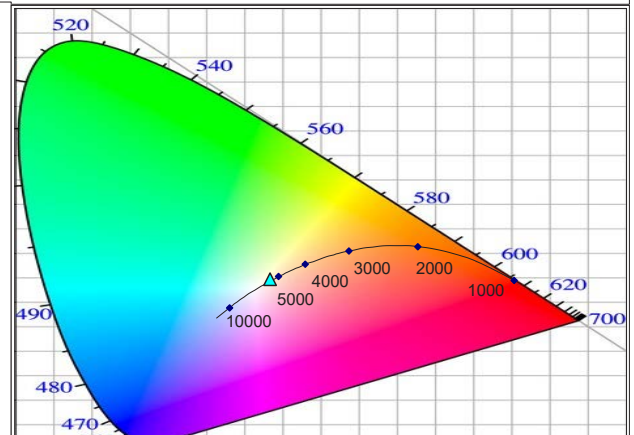
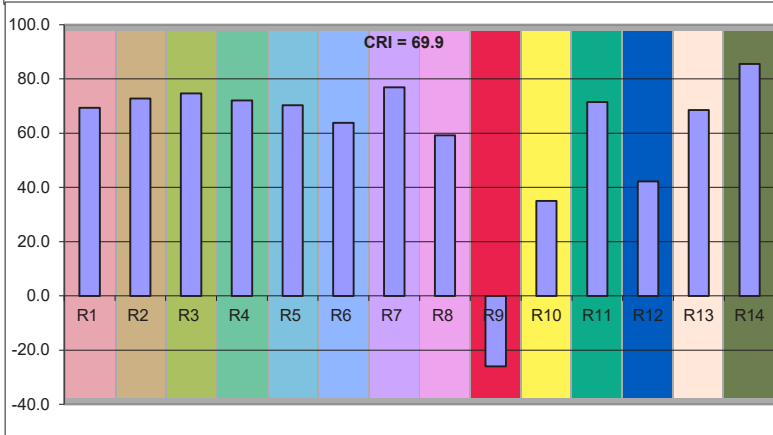
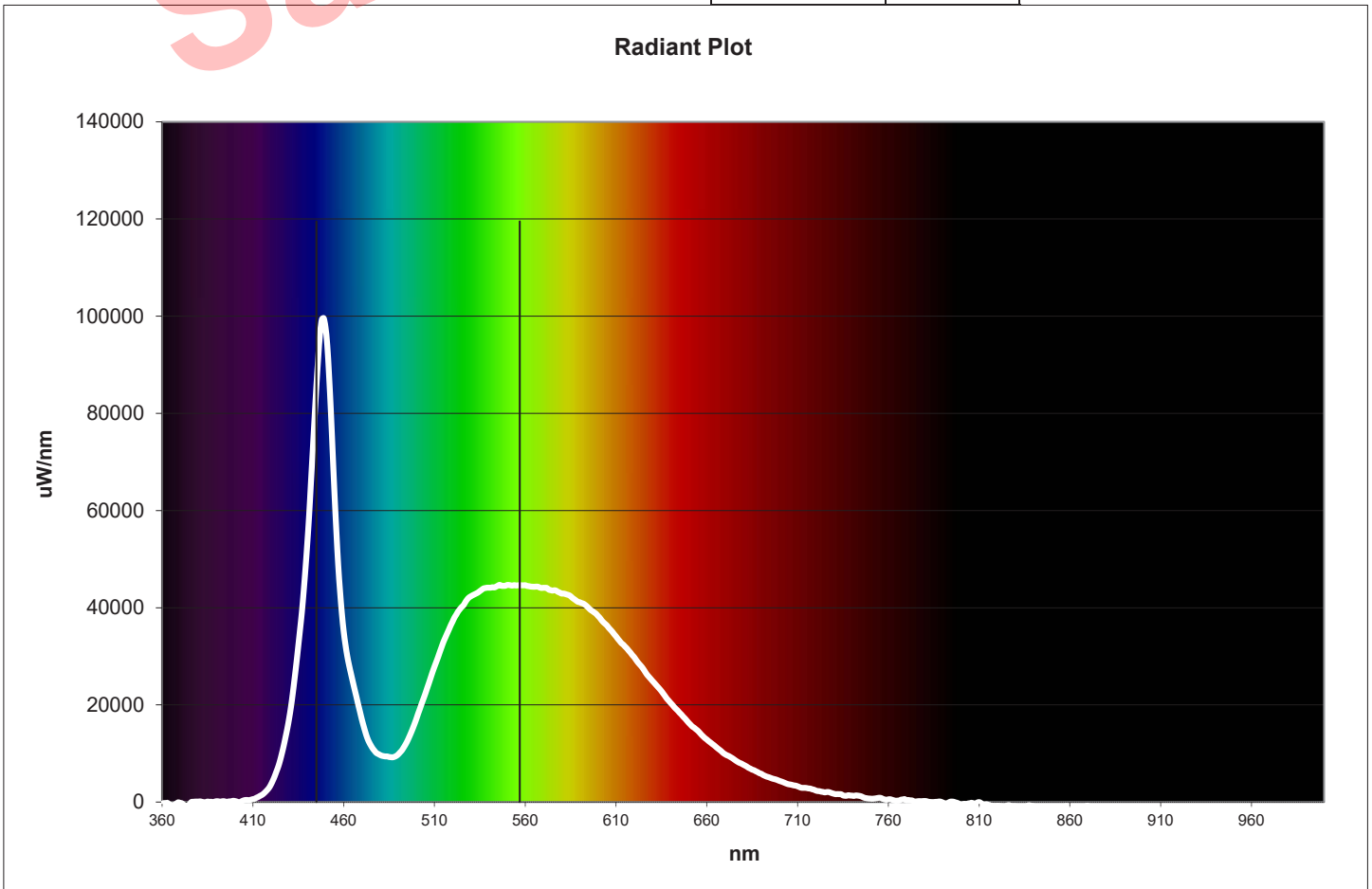
Comments: Final Lumens Measurement - Spot



| Spectral Parameters |          |
|---------------------|----------|
| Lumens              | 10303 Lm |
| CCT                 | 5436 K   |
| Radiant Power       | 29.96 W  |
| Dominant Wavelength | 557 nm   |
| Peak Wavelength     | 445 nm   |
| Purity              | 4.4      |

| CIE Chromaticity |        |
|------------------|--------|
| CIE x            | 0.3339 |
| CIE y            | 0.3467 |
| CIE z            | 0.3193 |
| u prime          | 0.2057 |
| v prime          | 0.4806 |

| CRI = 69.9 |            |
|------------|------------|
| R1 = 69.3  | R8 = 59.2  |
| R2 = 72.8  | R9 = -26.9 |
| R3 = 74.6  | R10 = 35.0 |
| R4 = 72.1  | R11 = 71.4 |
| R5 = 70.3  | R12 = 42.2 |
| R6 = 63.8  | R13 = 68.5 |
| R7 = 76.9  | R14 = 85.5 |



# TRUE LUMENS Report

Part Description LSL-2025, Day Light White, Flood,  
Acrylic Port, Aluminum Housing

Serial Number

Operator Name

Date

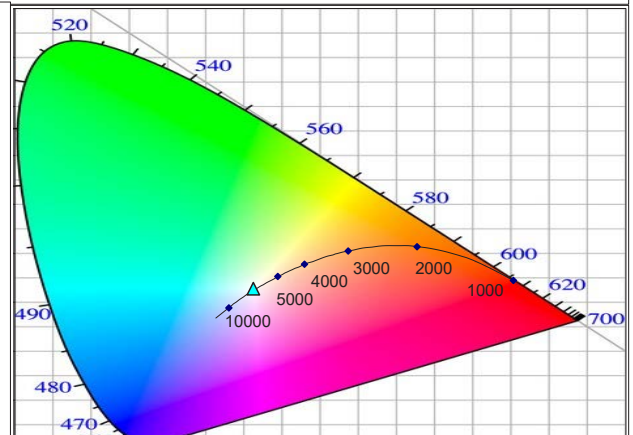
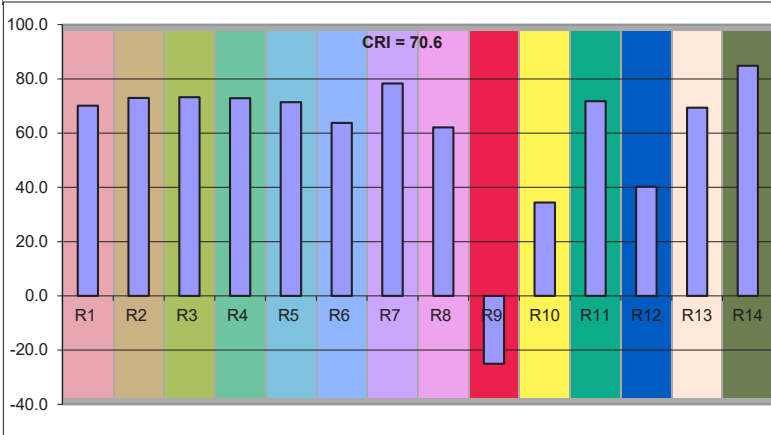
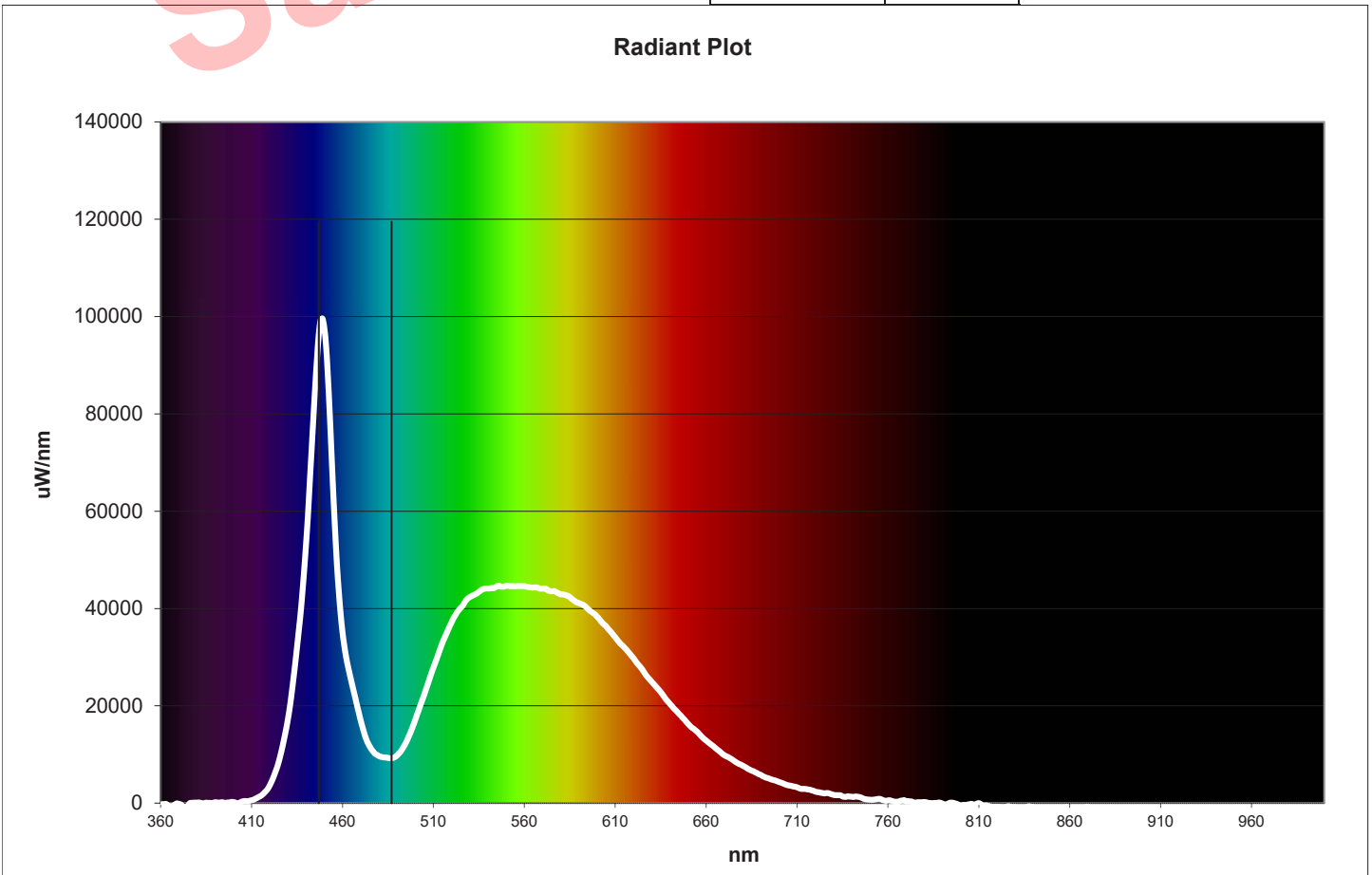
Comments: Final Lumens Measurement - Flood



| Spectral Parameters |         |
|---------------------|---------|
| Lumens              | 7816 Lm |
| CCT                 | 6496 K  |
| Radiant Power       | 22.85 W |
| Dominant Wavelength | 487 nm  |
| Peak Wavelength     | 447 nm  |
| Purity              | 7.2     |

| CIE Chromaticity |        |
|------------------|--------|
| CIE x            | 0.3131 |
| CIE y            | 0.3270 |
| CIE z            | 0.3600 |
| u prime          | 0.1988 |
| v prime          | 0.4673 |

| CRI = 70.6 |            |
|------------|------------|
| R1 = 70.1  | R8 = 62.1  |
| R2 = 73.0  | R9 = -25.3 |
| R3 = 73.2  | R10 = 34.4 |
| R4 = 72.9  | R11 = 71.8 |
| R5 = 71.4  | R12 = 40.2 |
| R6 = 63.8  | R13 = 69.4 |
| R7 = 78.3  | R14 = 84.8 |



# TRUE LUMENS Report

Part Description LSL-2025, Day Light White, Spot and Flood, Acrylic Port, Aluminum Housing

Serial Number

Operator Name

Date

Comments: Final Lumens Measurement - Spot and Flood



| Spectral Parameters |          |
|---------------------|----------|
| Lumens              | 10155 Lm |
| CCT                 | 5758 K   |
| Radiant Power       | 29.22 W  |
| Dominant Wavelength | 512 nm   |
| Peak Wavelength     | 446 nm   |
| Purity              | 2.1      |

| CIE Chromaticity |        |
|------------------|--------|
| CIE x            | 0.3266 |
| CIE y            | 0.3424 |
| CIE z            | 0.3311 |
| u prime          | 0.2024 |
| v prime          | 0.4773 |

| CRI = 70.1 |            |
|------------|------------|
| R1 = 69.3  | R8 = 59.9  |
| R2 = 72.8  | R9 = -28.2 |
| R3 = 74.6  | R10 = 35.1 |
| R4 = 72.3  | R11 = 71.3 |
| R5 = 70.4  | R12 = 40.3 |
| R6 = 63.8  | R13 = 68.7 |
| R7 = 77.7  | R14 = 85.6 |

