

LED SeaLite® 2000

True Lumens Reports

Table of Contents				
LED Color	Beam Pattern	Port	Housing	Page
Day Light White	Wide Flood	Acrylic	Aluminum	2
Day Light White	Flood	Acrylic	Aluminum	3
Day Light White	Flood	Sapphire	Aluminum	4
Day Light White	Flood	Sapphire	Titanium	5
Warm White	Wide Flood	Acrylic	Aluminum	6
Warm White	Flood	Sapphire	Titanium	7
Warm White	Spot	Acrylic	Aluminum	8

TRUE LUMENS Report

Part Description LSL-2000, Day Light White, Wide Flood, Acrylic Port, Aluminum Housing



Serial Number
Operator Name
Date

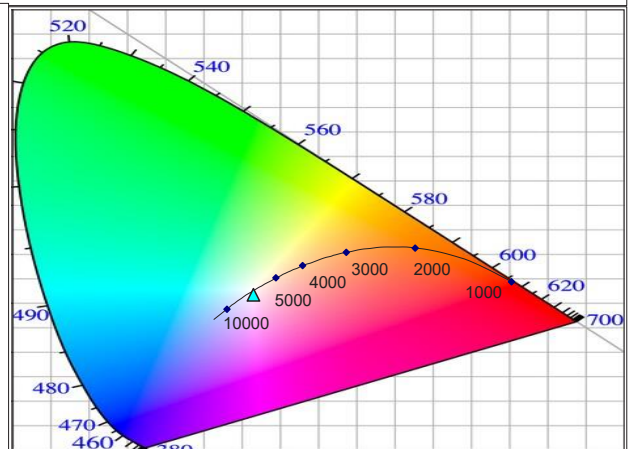
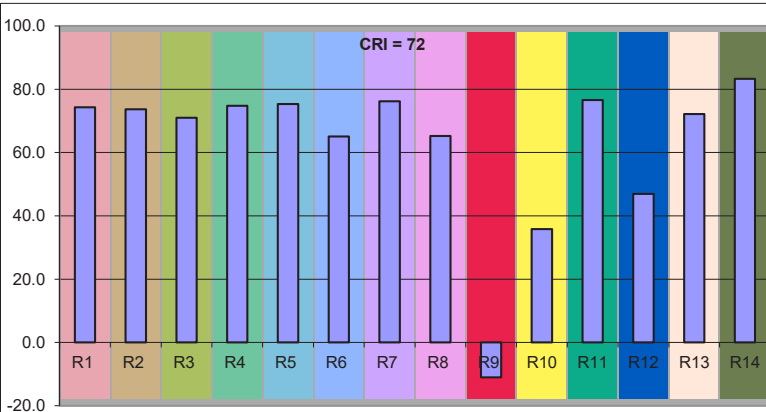
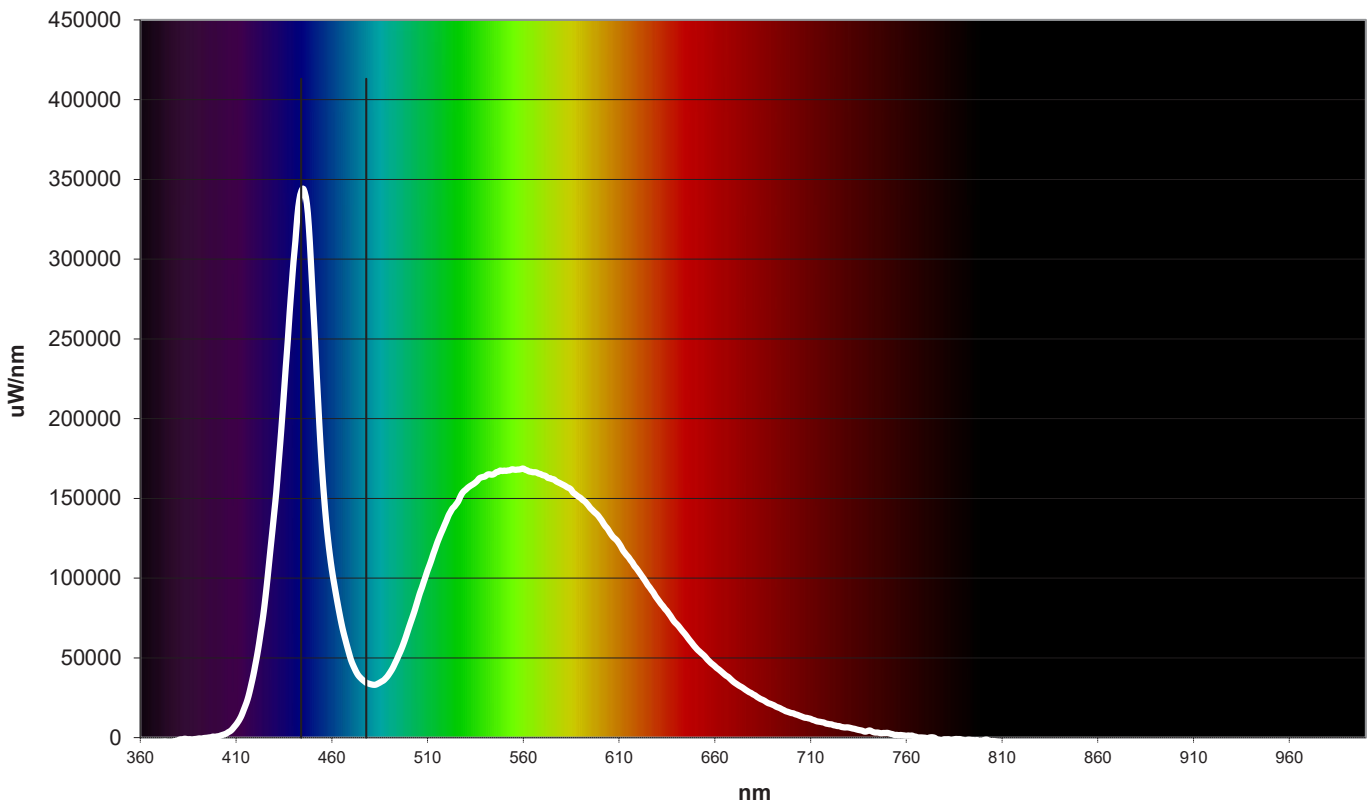
Comments: Final Lumen Measurement

Spectral Parameters	
Lumens	6343 Lm
CCT	6426 K
Radiant Power	17.98 W
Dominant Wavelength	478 nm
Peak Wavelength	444 nm
Purity	7.3

CIE Chromaticity	
CIE x	0.3156
CIE y	0.3173
CIE z	0.3671
u prime	0.2044
v prime	0.4624

CRI = 72	
R1 = 74.3	R8 = 65.2
R2 = 73.7	R9 = -11.4
R3 = 71.0	R10 = 35.8
R4 = 74.8	R11 = 76.6
R5 = 75.3	R12 = 46.9
R6 = 65.1	R13 = 72.2
R7 = 76.2	R14 = 83.3

Radiant Plot



TRUE LUMENS Report

Part Description LSL-2000, Day Light White, Flood, Acrylic Port, Aluminum Housing

Serial Number
Operator Name
Date

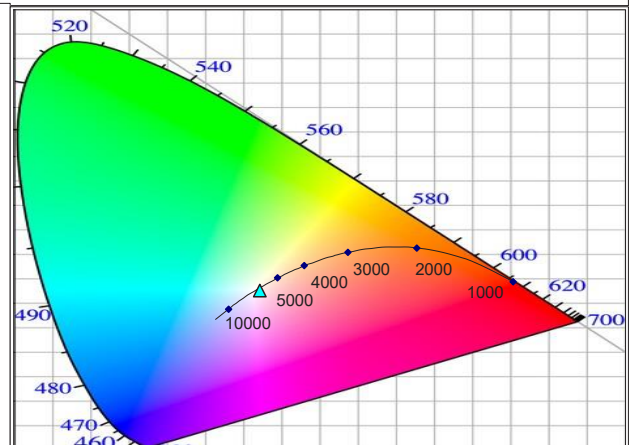
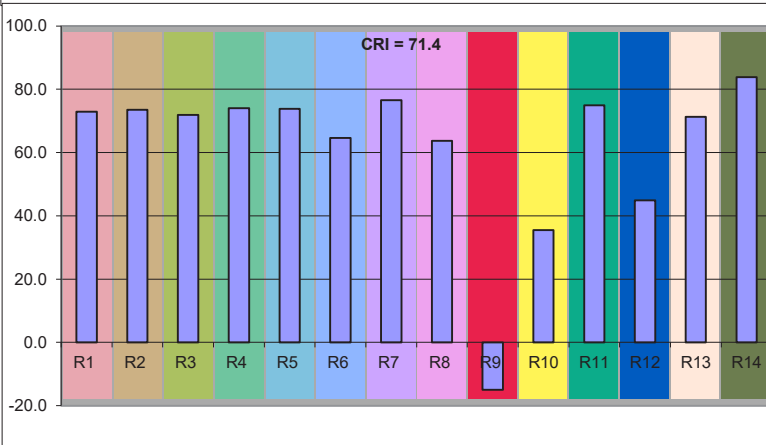
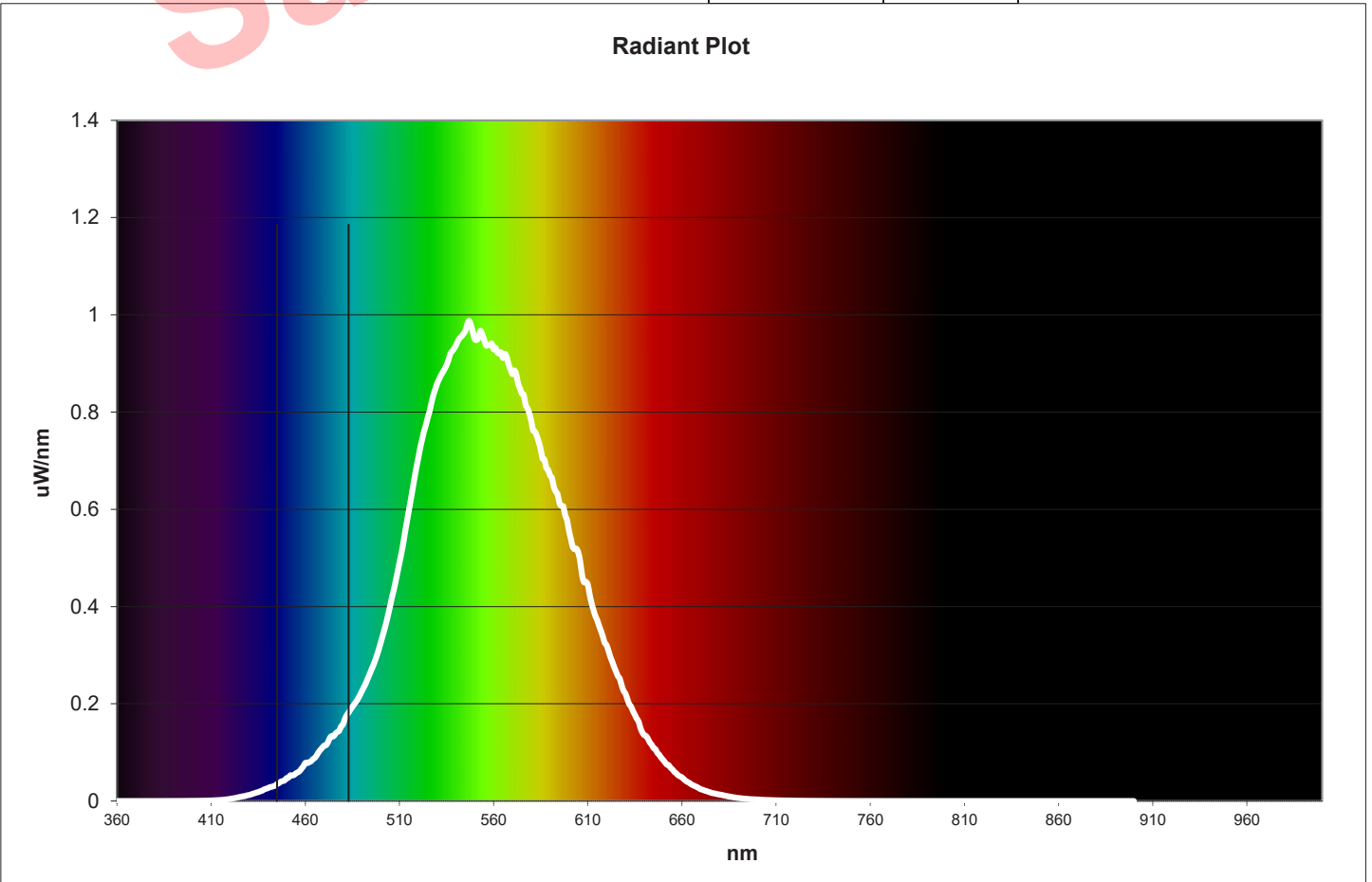
Comments: Final Lumens Measurement



Spectral Parameters	
Lumens	11335 Lm
CCT	6028 K
Radiant Power	36.45 W
Dominant Wavelength	483 nm
Peak Wavelength	445 nm
Purity	4.4

CIE Chromaticity	
CIE x	0.3219
CIE y	0.3260
CIE z	0.3522
u prime	0.2054
v prime	0.4681

CRI = 71.4	
R1 = 72.9	R8 = 63.7
R2 = 73.5	R9 = -15.0
R3 = 71.9	R10 = 35.5
R4 = 74.0	R11 = 74.9
R5 = 73.8	R12 = 44.9
R6 = 64.6	R13 = 71.3
R7 = 76.5	R14 = 83.8



TRUE LUMENS Report

Part Description LSL-2000, Day Light White, Flood, Sapphire Port, Aluminum Housing

Serial Number
Operator Name
Date

Comments: Final Lumens Measurement

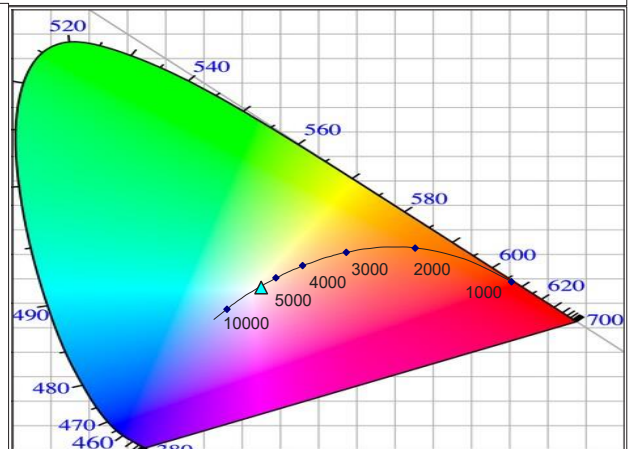
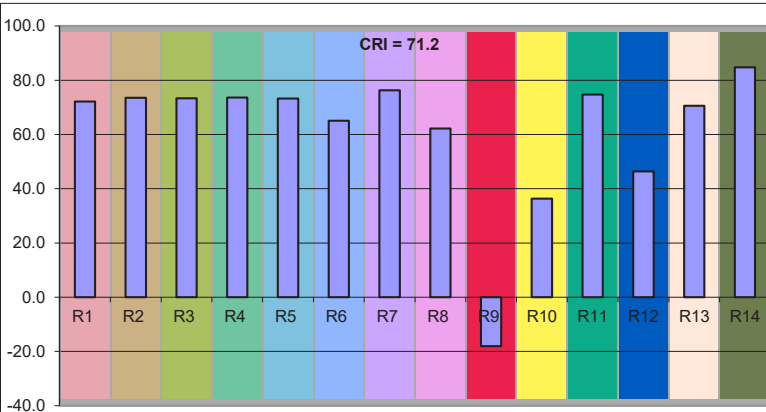
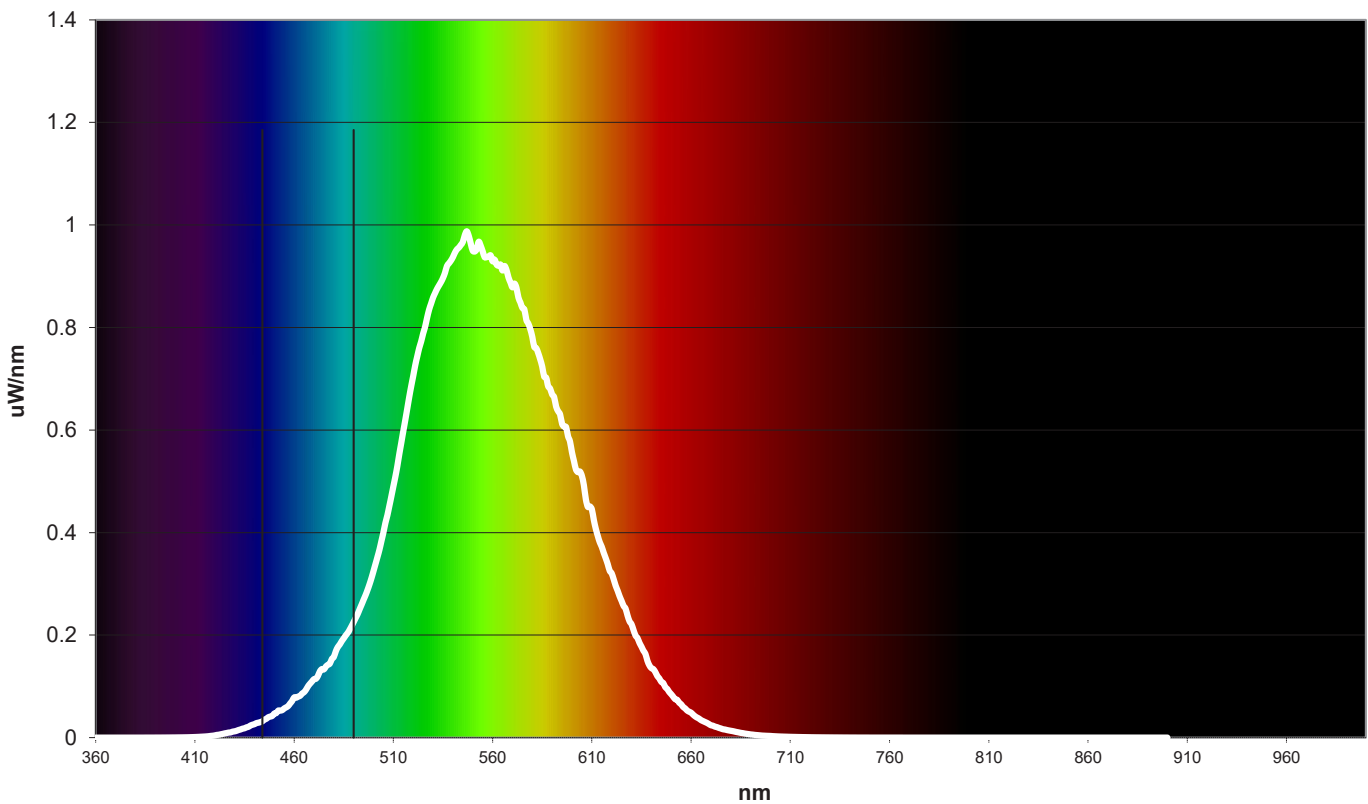


Spectral Parameters	
Lumens	9702 Lm
CCT	5817 K
Radiant Power	28.93 W
Dominant Wavelength	490 nm
Peak Wavelength	444 nm
Purity	2.5

CIE Chromaticity	
CIE x	0.3257
CIE y	0.3323
CIE z	0.3420
u prime	0.2056
v prime	0.4720

CRI = 71.2	
R1 = 72.1	R8 = 62.2
R2 = 73.5	R9 = -18.7
R3 = 73.3	R10 = 36.3
R4 = 73.6	R11 = 74.7
R5 = 73.2	R12 = 46.4
R6 = 65.1	R13 = 70.6
R7 = 76.3	R14 = 84.7

Radiant Plot



TRUE LUMENS Report

Part Description LSL-2000, Day Light White, Flood, Sapphire Port, Titanium Housing

Serial Number
Operator Name
Date

Comments: Final Lumens Measurement

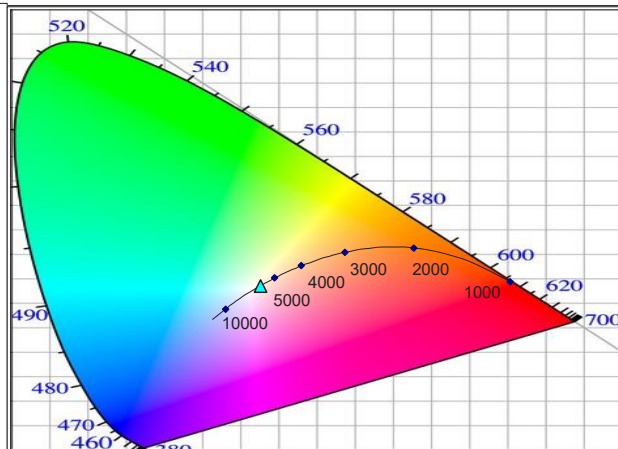
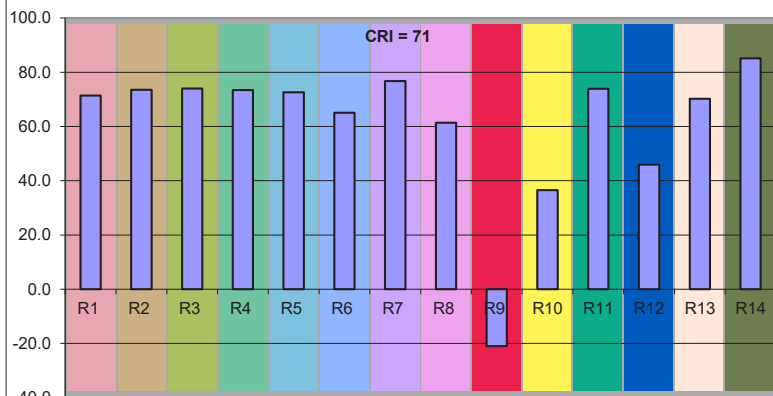
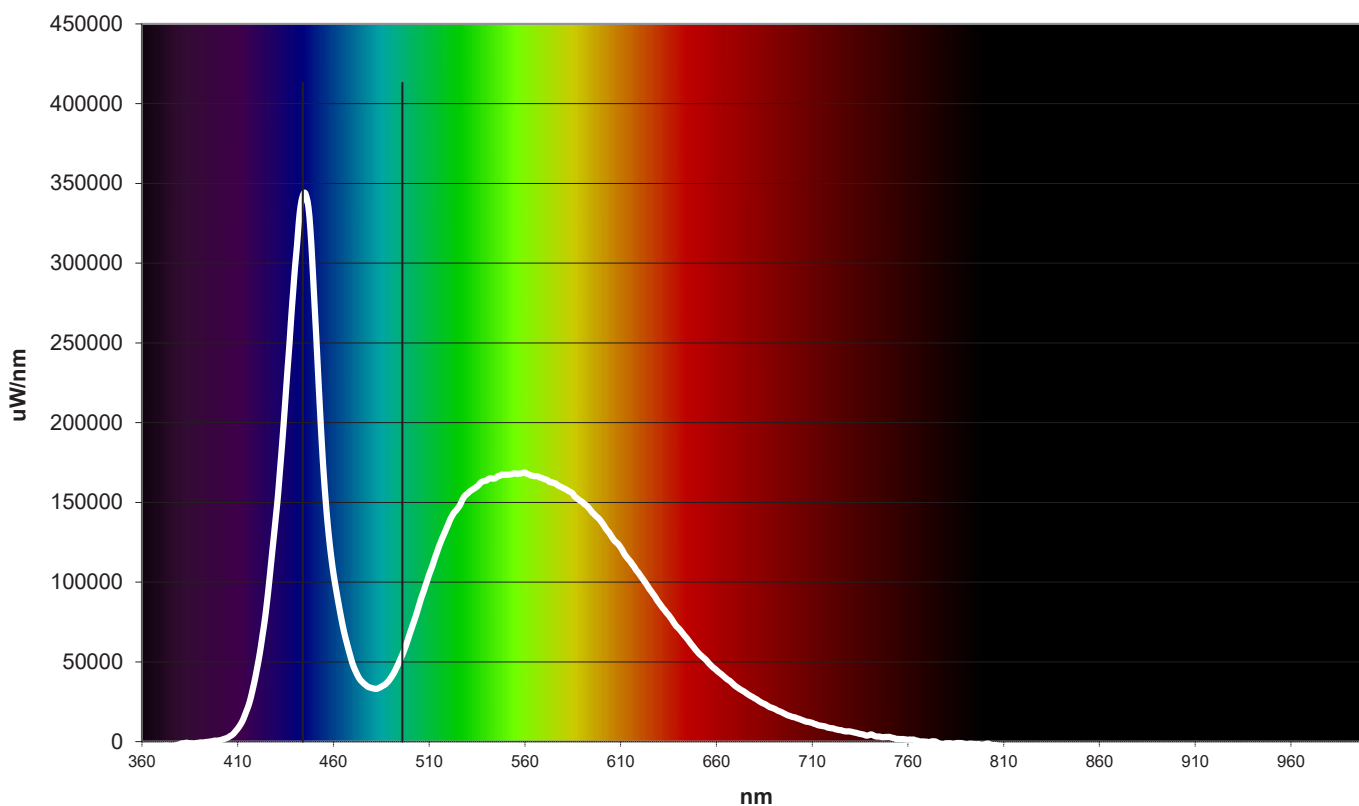


Spectral Parameters	
Lumens	9696 Lm
CCT	5759 K
Radiant Power	28.74 W
Dominant Wavelength	496 nm
Peak Wavelength	444 nm
Purity	2

CIE Chromaticity	
CIE x	0.3268
CIE y	0.3353
CIE z	0.3379
u prime	0.2052
v prime	0.4737

CRI = 71	
R1 = 71.4	R8 = 61.4
R2 = 73.5	R9 = -21.2
R3 = 74.0	R10 = 36.5
R4 = 73.4	R11 = 73.9
R5 = 72.6	R12 = 45.9
R6 = 65.1	R13 = 70.2
R7 = 76.7	R14 = 85.1

Radiant Plot



TRUE LUMENS Report

Part Description LSL-2025, Warm White, Wide Flood, Acrylic Port, Aluminum Housing

Serial Number

Operator Name

Date

Comments: Final Lumens Measurement

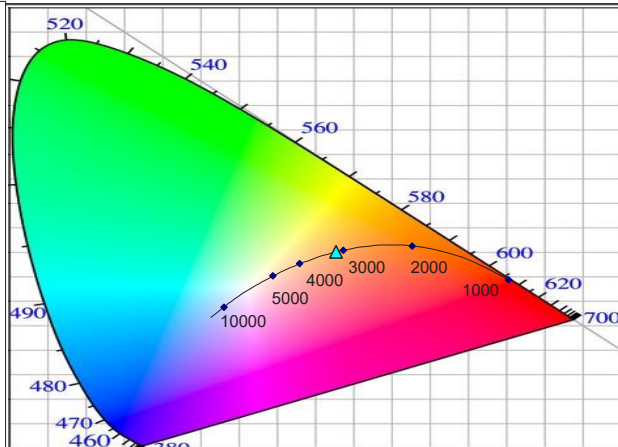
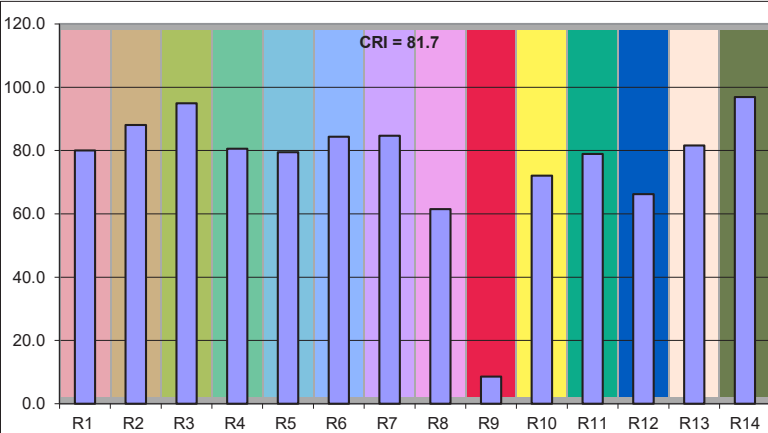
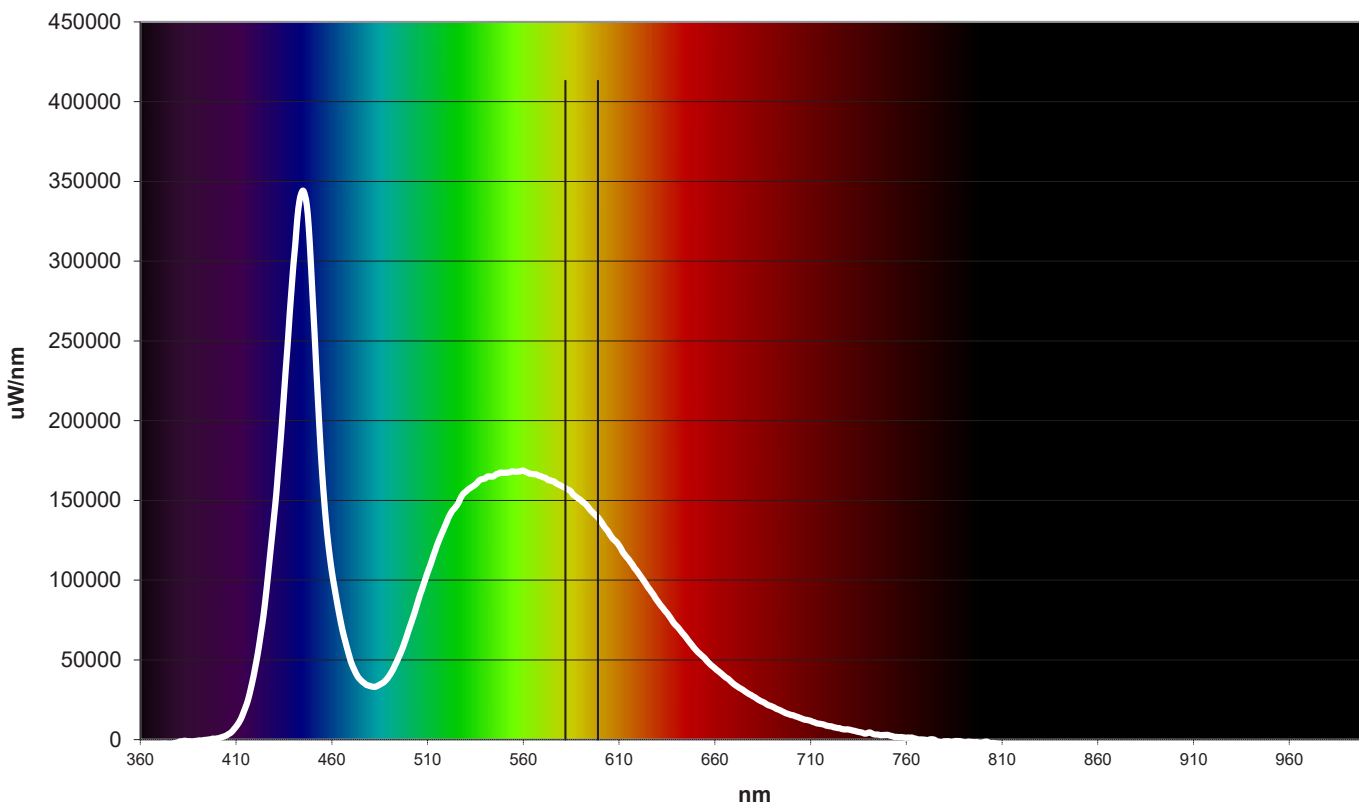


Spectral Parameters	
Lumens	5652 Lm
CCT	3139 K
Radiant Power	17.35 W
Dominant Wavelength	582 nm
Peak Wavelength	599 nm
Purity	49

CIE Chromaticity	
CIE x	0.4276
CIE y	0.4013
CIE z	0.1710
u prime	0.2457
v prime	0.5189

CRI = 81.7	
R1 = 80.0	R8 = 61.5
R2 = 88.1	R9 = 8.6
R3 = 94.9	R10 = 72.1
R4 = 80.6	R11 = 78.9
R5 = 79.5	R12 = 66.2
R6 = 84.4	R13 = 81.6
R7 = 84.7	R14 = 96.9

Radiant Plot



TRUE LUMENS Report

Part Description LSL-2000, Warm White, Flood,
Sapphire Port, Titanium Housing

Serial Number
Operator Name
Date

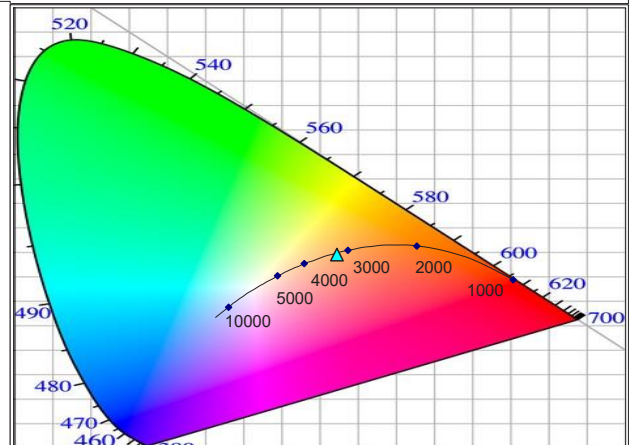
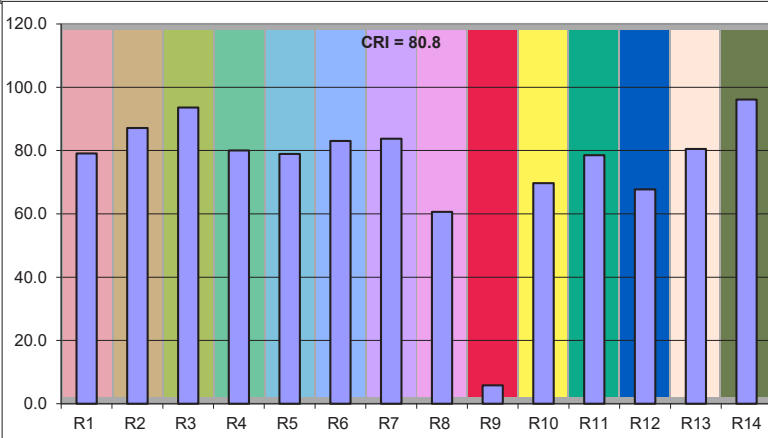
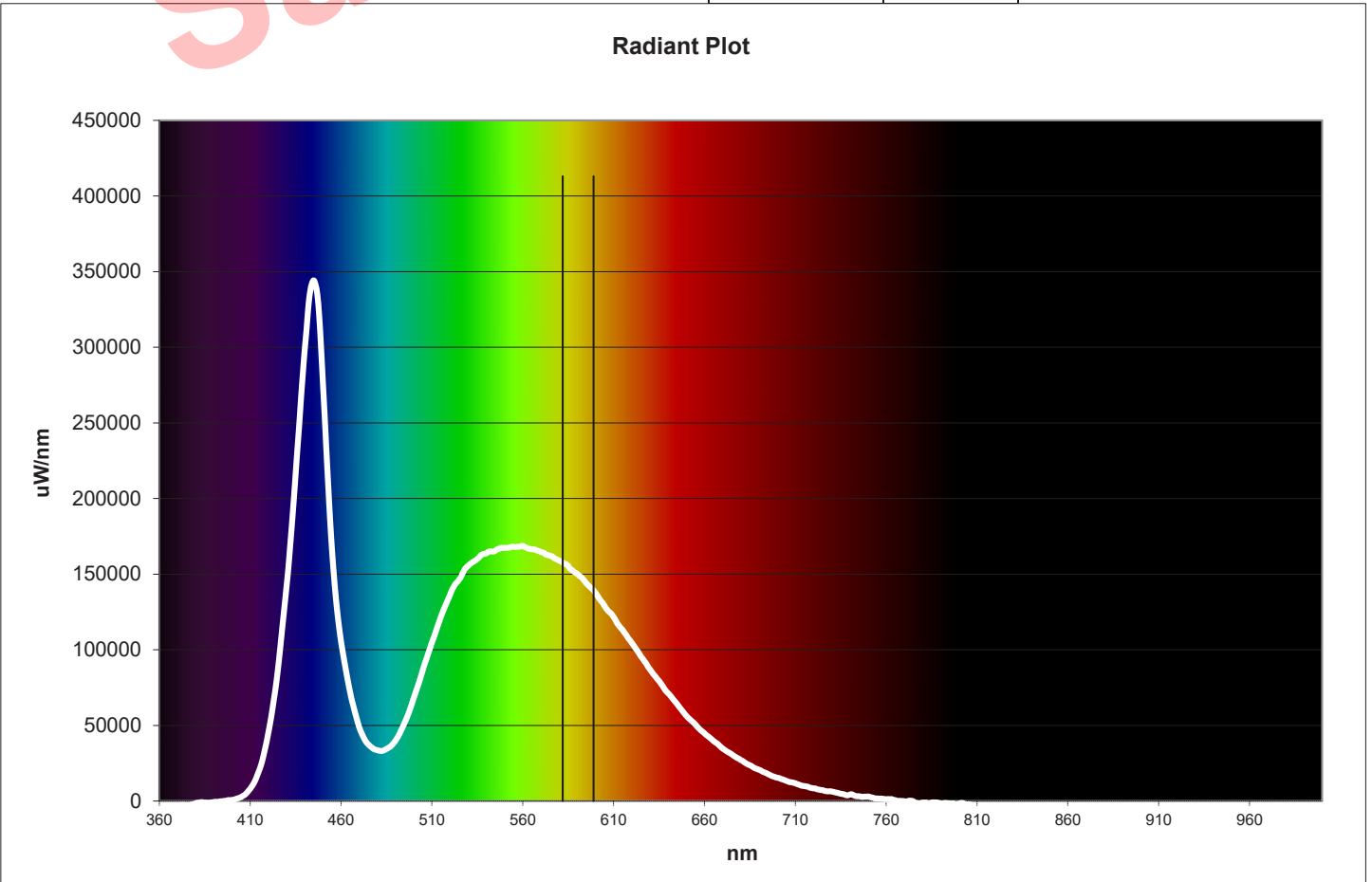
Comments: Final Lumen Test



Spectral Parameters	
Lumens	8016 Lm
CCT	3181 K
Radiant Power	24.75 W
Dominant Wavelength	582 nm
Peak Wavelength	599 nm
Purity	45.8

CIE Chromaticity	
CIE x	0.4227
CIE y	0.3954
CIE z	0.1819
u prime	0.2451
v prime	0.5158

CRI = 80.8	
R1 = 79.1	R8 = 60.6
R2 = 87.1	R9 = 5.8
R3 = 93.6	R10 = 69.7
R4 = 80.0	R11 = 78.5
R5 = 78.9	R12 = 67.7
R6 = 83.0	R13 = 80.5
R7 = 83.7	R14 = 96.1



TRUE LUMENS Report

Part Description LSL-2000, Warm White, Spot, Acrylic Port, Aluminum Housing

Serial Number
Operator Name
Date

Comments: Final Lumens Measurement



Spectral Parameters	
Lumens	5980 Lm
CCT	3143 K
Radiant Power	18.29 W
Dominant Wavelength	582 nm
Peak Wavelength	601 nm
Purity	47.8

CIE Chromaticity	
CIE x	0.4262
CIE y	0.3987
CIE z	0.1751
u prime	0.2460
v prime	0.5176

CRI = 81.1	
R1 = 79.3	R8 = 59.9
R2 = 88.2	R9 = 5.5
R3 = 95.1	R10 = 72.0
R4 = 79.3	R11 = 77.1
R5 = 78.8	R12 = 65.0
R6 = 84.2	R13 = 81.1
R7 = 83.8	R14 = 97.1

Radiant Plot

