

### To Connect the Interface Box



Connect the power through either DC or AC - the "Power Connected" light will come on

Connect the USB lead - note that the white arrow should be on the top of the USB lead.

Connect the sonar head at the front of the interface box but do not turn on the sonar power until the software is installed



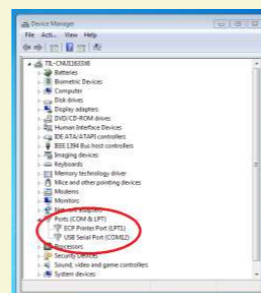
Ensure all connections are screwed in tightly for a good seal.

Do not power the sonar yet



Install the Seanet Pro V2 Software by inserting the Hammerhead Installation CD-ROM into the computer - if it does not start up automatically navigate to the CD-ROM drive and select "Autorun.exe"

The installation will copy all necessary drivers to the computer so all that is now required is to connect the interface box via a spare USB port



Launch the "Device Manager" (on Windows 7, press the Windows button and type "Device Manager")

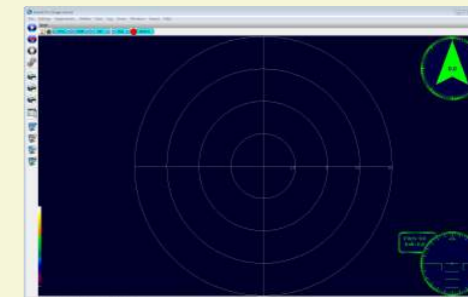
Find the "Ports" section and make a note of the new COM port. If in doubt, remove the USB connector and re-insert to verify which COM port is the Interface Box

Launch Seanet Setup and go to "Com Setup" from the "Utilities" menu - the following dialog box should be displayed. Click on the direction arrows for the "COM Port" of the "Aif" device to change it to the COM Port for the Interface Box.

Device	COM Port	Enabled	Baud Rate	Settings	Status	Type
Aif	12	<input checked="" type="checkbox"/>	115200	...	OK	USB
Aux Device	2	<input type="checkbox"/>	9600	...	Not Available	N/A
Barometer	2	<input type="checkbox"/>	9600	...	Not Available	N/A

The "Status" should change to "OK"

Close the Seanet Setup program and launch Seanet Pro. This will bring up the "Single Sonar" screen and enable communication with the Hammerhead



# Seaking Hammerhead Quick Start Guide

### The Gimbal Ring

Normally the Hammerhead will be supplied with the gimbal ring already attached, however, for cleaning the unit it may be necessary to remove the ring and replace it. For this task a flat screwdriver and 5mm hex key are required



The gimbal ring is made up of three main components - the stainless steel gimbal ring and two black acetal half shells of the clamp ring

First use a screwdriver to remove the gimbal ring from the clamp ring.

Note for re-assembly that these two bolts should be inserted flush with the gimbal ring and should have plastic washers between the gimbal ring and the clamp ring



Use the 5mm hex key to remove the 4 bolts holding together the two half shells

The clamp ring can now be split in two and removed from the Hammerhead body

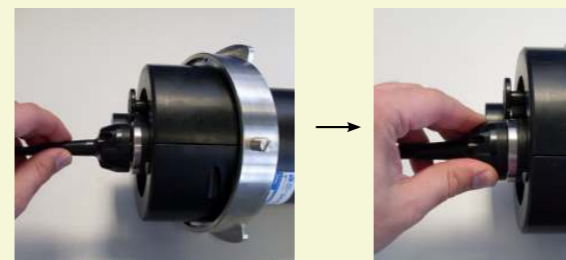


### To Connect and Test the Sonar



Check the O-ring seal on the cable every time it is connected (even if the sonar is being tested in air). O-rings degrade over time, especially if left in direct sunlight for extended periods.

The connector can only be orientated one way so make sure the pins line up and then push it to fit



Tighten the bolts with the Hex key provided and ensure a good secure fit to the waterblock

If testing on a bench make sure that the transducer head is free to rotate

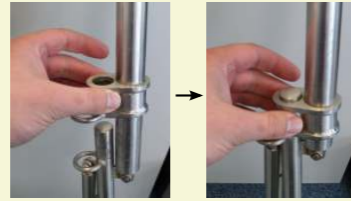


### Assembly of the Tripod

The tripod is made up of the following components:

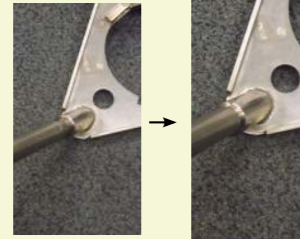
- 3 legs
- Top section with hanger
- Gimbal arrangement (may already be attached to the sonar)

First, take the top section and lie flat on the floor (it may be necessary to collapse the hanger).



Fully extend one leg by opening out and slide securing ring into position

Place the top plate on the floor and align the leg with the hole.



Once aligned properly it should push in easily.

Make sure the leg is pushed all the way in.



Repeat this procedure for the other two legs and then lift the tripod to an upright position

Connect the legs together using the special clips. Adjust the angle of the leg by screwing or unscrewing in order that the clip can fit



Rotate the leg so the clip can reach the eye



Make sure clip goes through both eyes



To fit the sonar head lift it up through the top plate, rotate until the lugs line up with their sockets and then lower it until the tripod takes the weight. Close the locking plates and fasten the thumbscrews.

Once the tripod is upright make sure the side supports are correctly tensioned.

Screw the adjuster until the threaded pieces meet in the middle.



# Seaking Hammerhead

## Quick Start Guide

### Micron Responder Mount

To fix the micron responder mount to the top of the Hammerhead tripod first hold the base of the mount underneath the correct hole



Screw the top section down onto the base until it is secured tightly

The tripod plate shown with the responder mount fitted to it



### Troubleshooting

For detailed troubleshooting guidelines see the Hammerhead Sonar Product Manual.

The most common problems arise from data connection or power leads being incorrectly installed.

- Check that the sonar is connected to the Interface Box and that it is connected to the PC
- The interface box should have power and the power LED should be illuminated
- Check the connection to the computer. Remove the USB lead, wait a moment and then re-insert it. Verify that Windows is correctly detecting the Interface Box

Another common problem is if Seanet Pro has been used with other sonars it will show more than one sonar display on the screen. Make sure that "Single Sonar" is selected from the Application menu

### Help & Support

For detailed instructions on the use and setup of the Hammerhead Sonar please refer to the Product Manual and also the Software Manual for the Seanet Pro application. If, however, there is an issue that remains unresolved, please contact customer support who will be pleased to help

	Mail	<i>Tritech International Ltd</i> Peregrine Road Westhill Business Park Westhill, Aberdeen AB32 6JL, UK
	Telephone	++44(0)1224 744 111
	Fax	++44(0)1224 741 771
	Email	<a href="mailto:support@tritech.co.uk">support@tritech.co.uk</a>
	Website	<a href="http://www.tritech.co.uk">www.tritech.co.uk</a>