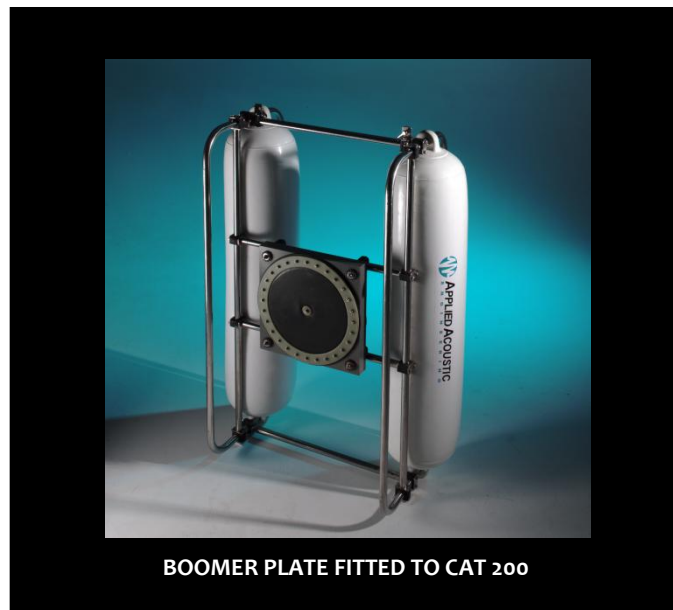




APPLIED ACOUSTICS
Underwater Technology

MODEL CAT100 CATAMARAN OPERATING MANUAL

CSP-1000-8003/1



Amended April 2006

Contents

Introduction.....	5
Parts Designation.....	6
Installation.....	7
Deployment.....	8
Maintenance Procedures	9
Technical Specifications.....	10

Introduction

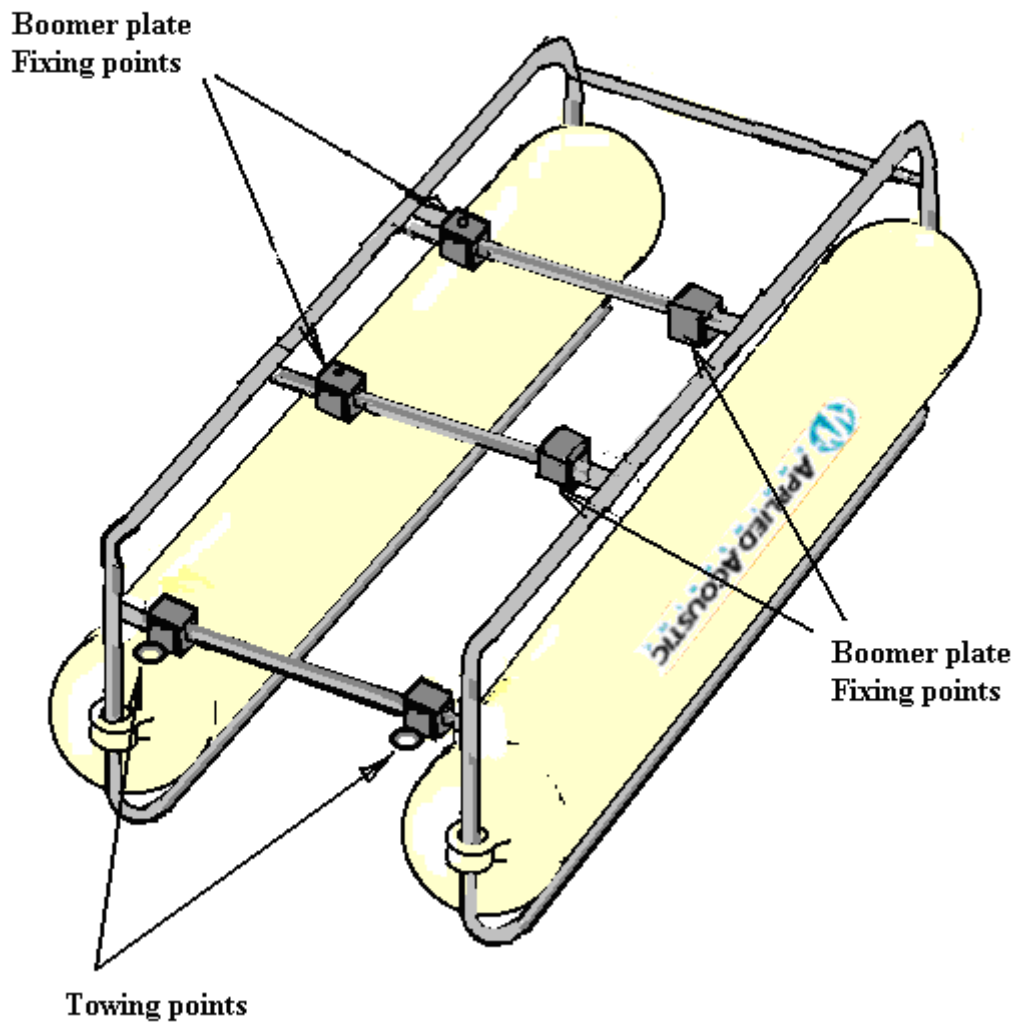
The CAT100 catamaran has been designed to provide a stable platform for high resolution sub bottom data acquisition.

The CAT100 has been designed to carry the AA200 Boomer Plate, to provide a small, lightweight solution for inshore surveys.

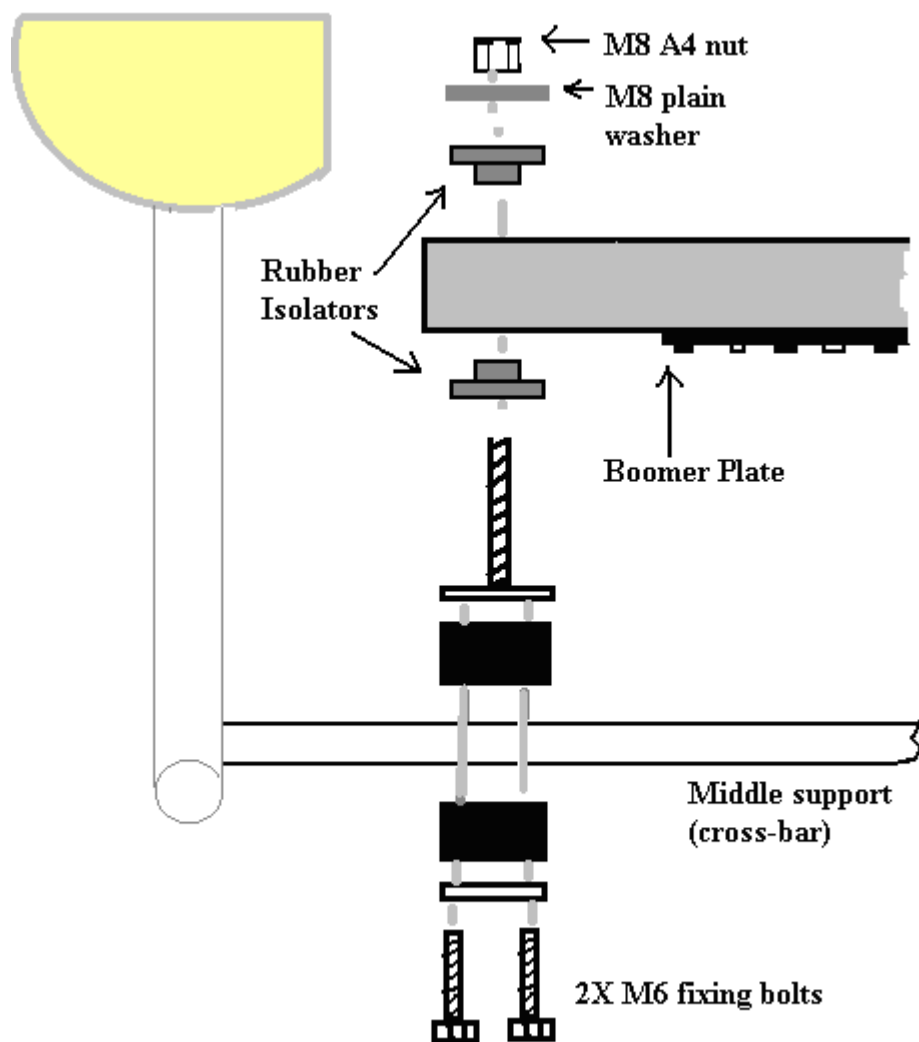
The bespoke design utilising marine consumables makes this the ideal solution for field support.



Parts Designation CAT100 (Underside View)



AA200 Installation:



Deployment

Two towing ropes should be secured to the catamaran using two stainless shackles on the two points (see diagram). These towropes can provide a degree of steerage by adjusting the tension on each rope. Other adjustments include altering the towing point position (fore and aft) to increase stability of the catamaran. Note: No stress should be applied to the electrical connections whilst the unit is undertow as this may cause failure during operation.

A quick sea trial should be undertaken to check the floatation characteristics of the catamaran underway at roughly 2-3 Knots.

Maintenance Procedures

The below procedures are advisory guidelines that are recommended.

Inspection Interval

- **Pre-Deployment:**
The recommended interval for a visual inspection is on every deployment of the catamaran.

Visual Inspection (Pre Deployment)

- Check for mechanical damage / insecure fastenings.
- Check the floats for correct inflation.

The Applied Acoustic Engineering CAT200 unit does not require regular servicing with the exception above operational inspections.

When storing for long periods it is recommended the catamaran is cleaned with fresh water.

Technical Specifications CAT100

Overall length	: 940mm	37 inches
Overall width	: 740mm	29 inches
Maximum height	: 500mm	20 inches
Weight	: 10 Kg	22 lbs
Material	: Stainless steel A4 metalwork fixings, other parts plastic.	
Fixings	: All stainless steel A4, 2 spanners supplied.	



APPLIED ACOUSTICS

Underwater Technology

Applied Acoustic Engineering Ltd
Marine House
Marine Park
Gapton Hall Road
Great Yarmouth
NR31 0NB UK

Phone: +44 (0) 1493 440355

Fax: +44 (0) 1493 440720

E-mail techsupport@appliedacoustics.com
www.appliedacoustics.com