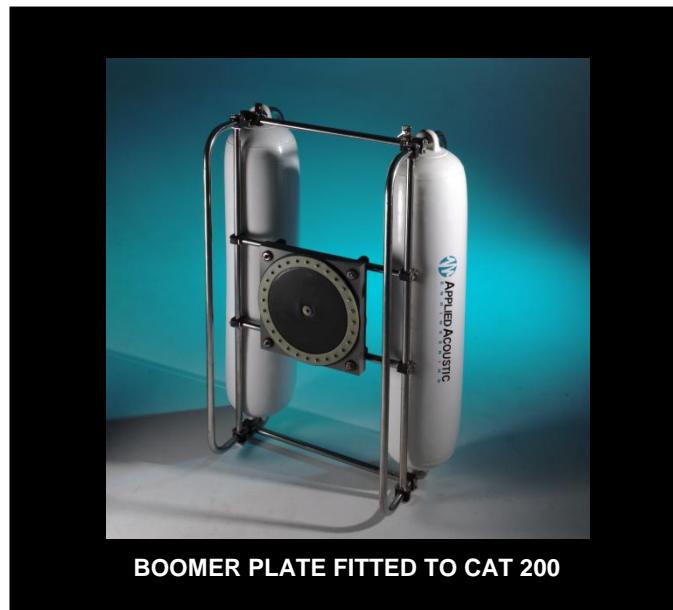




**APPLIED ACOUSTICS**  
Underwater Technology

# **MODEL CAT200 CATAMARAN OPERATING MANUAL**

**CSP-1000-8004/2**



Amended November 2009



## **Contents**

|                                      |           |
|--------------------------------------|-----------|
| <b>Introduction.....</b>             | <b>5</b>  |
| <b>Parts Designation.....</b>        | <b>6</b>  |
| <b>Assembly.....</b>                 | <b>7</b>  |
| <b>Deployment.....</b>               | <b>10</b> |
| <b>Maintenance Procedures .....</b>  | <b>11</b> |
| <b>Technical Specifications.....</b> | <b>12</b> |



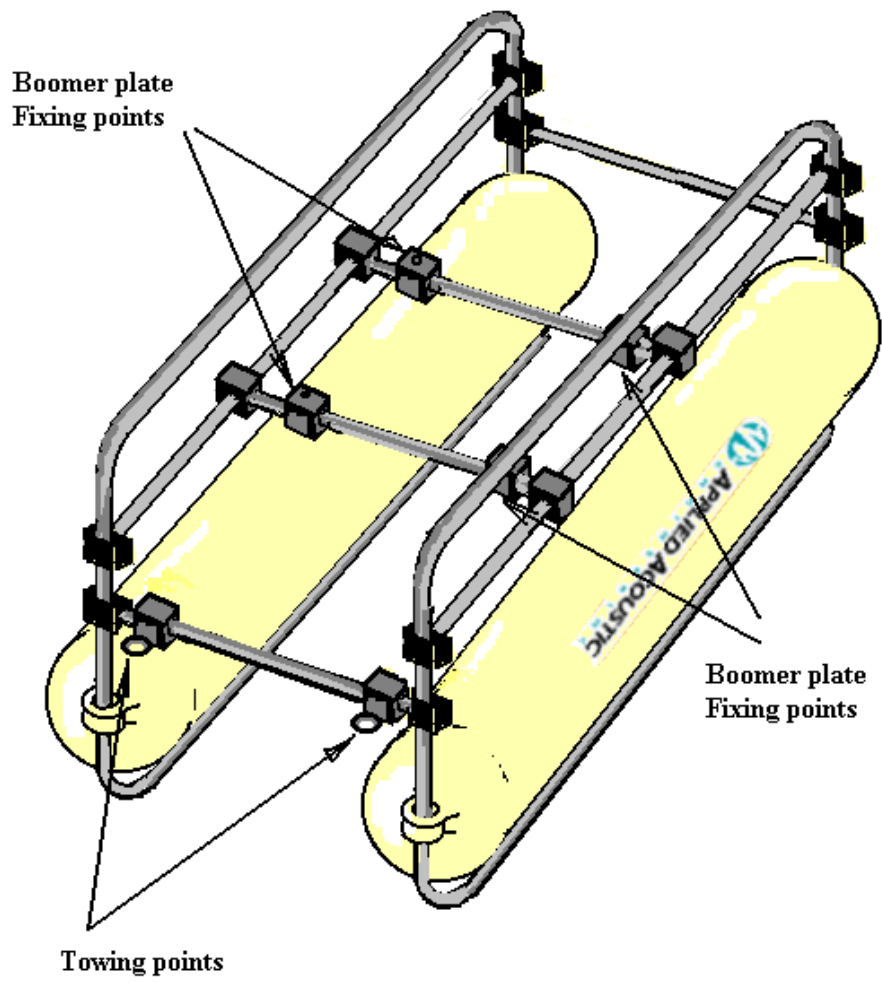
## Introduction

The CAT200 catamaran has been designed to provide a stable platform for high resolution sub bottom data acquisition. With it's versatility it can accommodate a wide variety of boomer plates, including the AA200 and AA300 Models.

The unique construction allows the operator to 'balance' the catamaran to the load fitted and desired speed. The bespoke design utilising marine consumables makes this the ideal solution for field support.

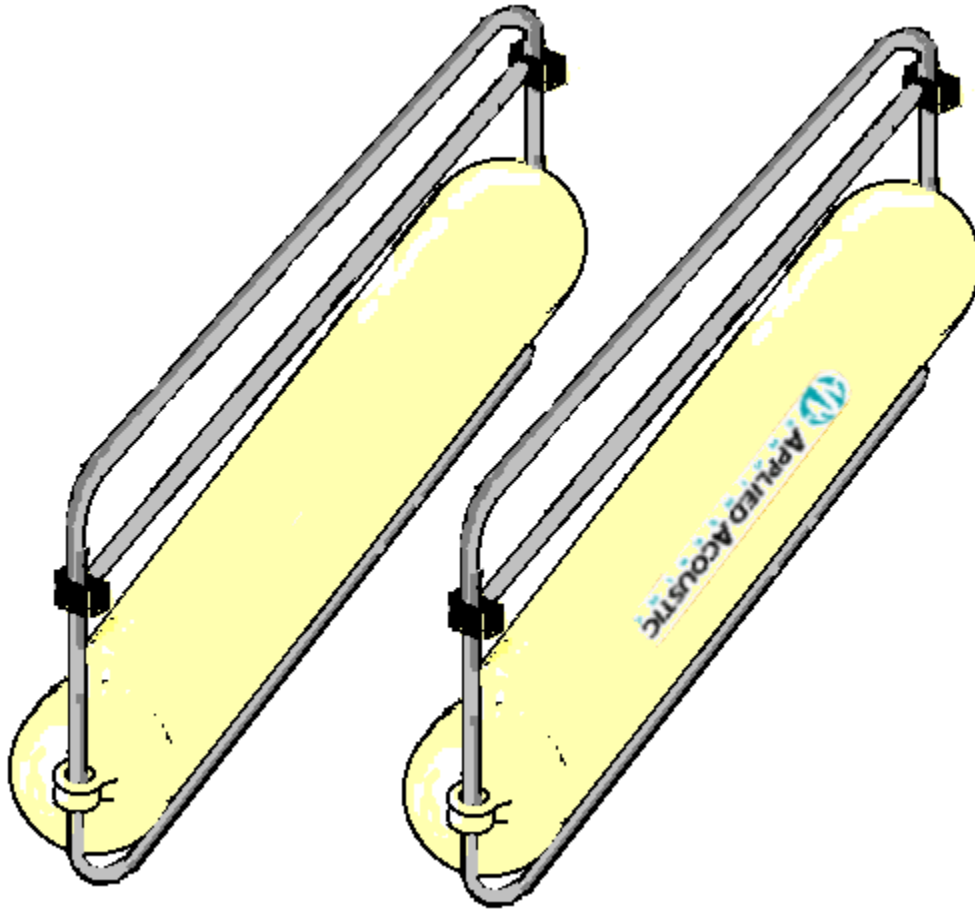


## Parts Designation CAT200 (Underside View)



**Assembly:**

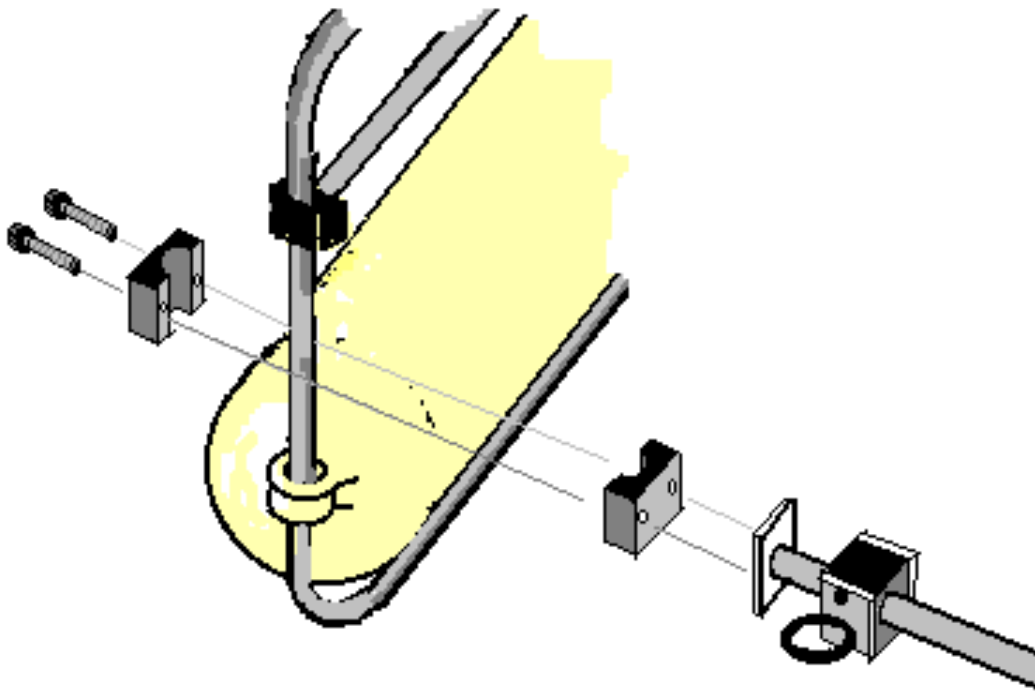
(A)



Position side by side the two floatation side units with the Logo facing outwards.

## Assembly Continued.

(B)



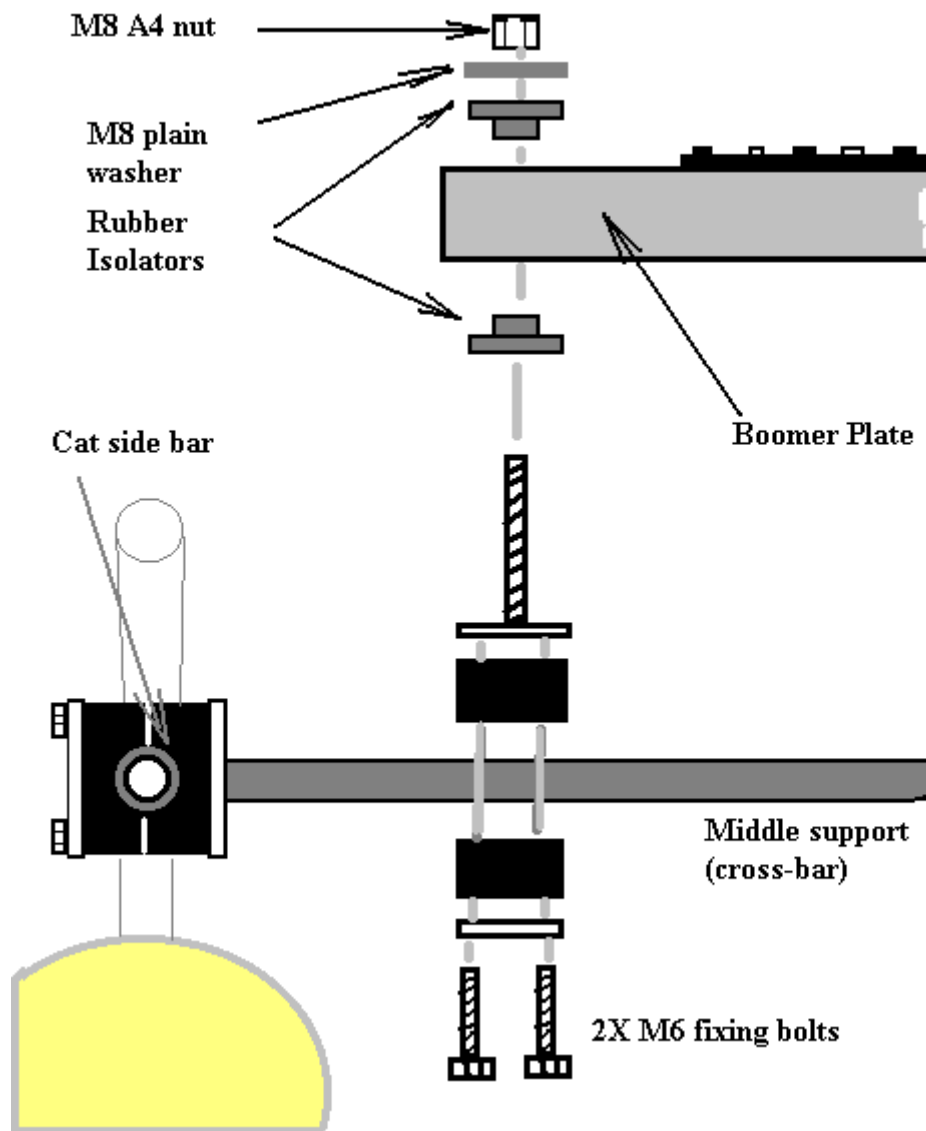
Bolt the front towing cross member to each catamaran floatation side using the plastic isolation clamp and 10mm bolts. Note bolt heads should face outwards from Catamaran sides. Proceed with rear cross member (refer to parts designation picture for completed unit view).

Bolt together the two middle Boomer support bars temporarily in the middle of the CAT200. Offer up for trial fitment the Boomer plate and adjust the fixings to suit the Boomer plate fixing centres. The long M8 studs should face up away from the floatation units.



## Assembly Continued.

(C)



Fit the two rubber isolators on each side of the Boomer plate and secure with stainless A4 M8 nuts and flat washers.

## Deployment

Two towing ropes should be secured to the catamaran using two stainless shackles on the two points (see diagram). These towropes can provide a degree of steerage by adjusting the tension on each rope. Other adjustments include altering the towing point position (fore and aft) to increase stability of the catamaran. Note: No stress should be applied to the electrical connections whilst the unit is undertow as this may cause failure during operation.

A quick sea trial should be undertaken to check the floatation characteristics of the catamaran underway at roughly 2-3 Knots.

## Maintenance Procedures

The below procedures are advisory guidelines that are recommended.

### **Inspection Interval**

- **Pre-Deployment:**  
The recommended interval for a visual inspection is on every deployment of the catamaran.

### **Visual Inspection (Pre Deployment)**

- Check for mechanical damage / insecure fastenings.
- Check the floats for correct inflation.

The Applied Acoustic Engineering CAT200 unit does not require regular servicing with the exception above operational inspections.

When storing for long periods it is recommended the catamaran is cleaned with fresh water.

## Technical Specifications CAT200

|                       |  |             |
|-----------------------|--|-------------|
| <b>Overall length</b> | : 1280mm                                       | 50.5 inches |
| <b>Overall width</b>  | : 915mm  | 36 inches   |
| <b>Maximum height</b> | : 525mm  | 20.5 inches |
| <b>Weight</b>         | : 24 Kg  | 52.8 lbs    |
| <b>Material</b>       | : A4 metalwork fixings, other parts plastic    |             |
| <b>Fixings</b>        | : All stainless steel A4, 2 spanners supplied. |             |





**APPLIED ACOUSTICS**  
Underwater Technology

Applied Acoustic Engineering Ltd  
Marine House  
Marine Park  
Gapton Hall Road  
Great Yarmouth  
NR31 0NB UK

Phone: +44 (0) 1493 440355

Fax: +44 (0) 1493 440720

E-mail [techsupport@appliedacoustics.com](mailto:techsupport@appliedacoustics.com)  
[www.appliedacoustics.com](http://www.appliedacoustics.com)